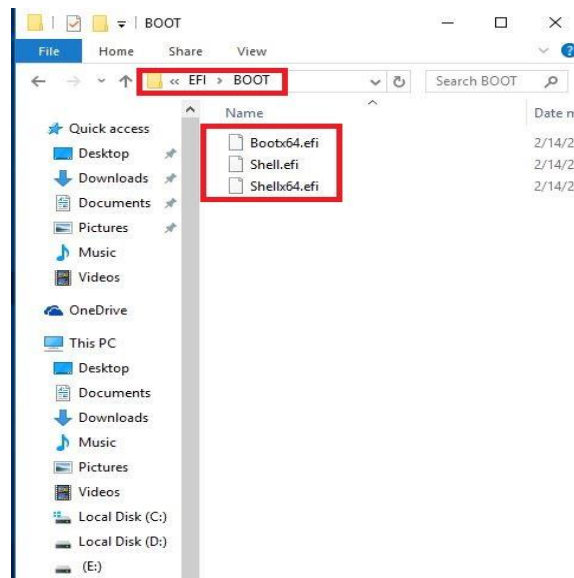


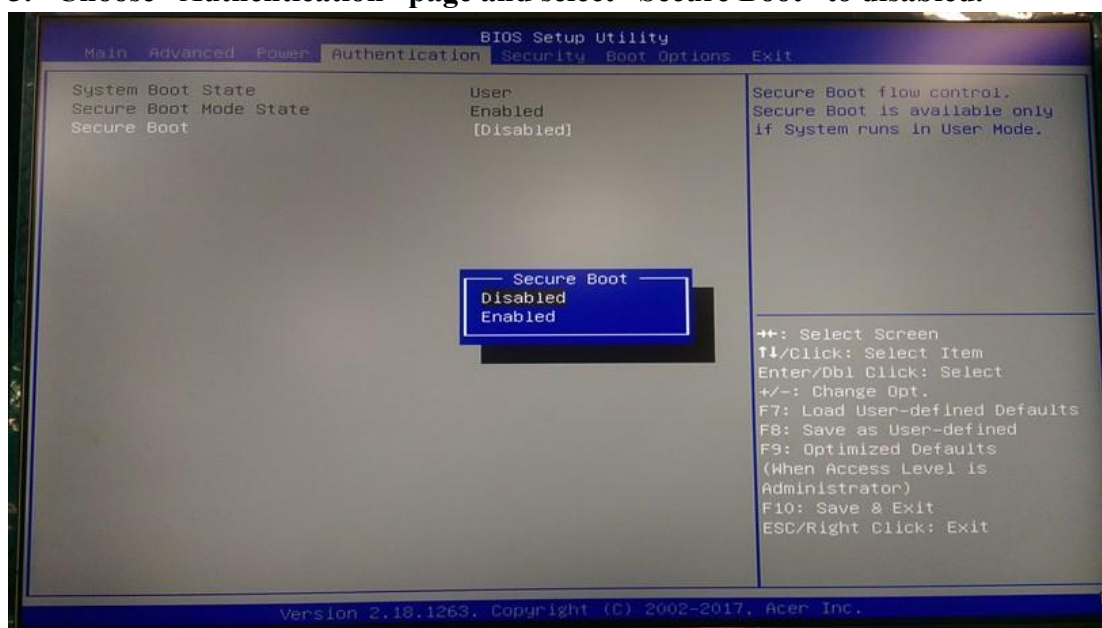
# EFI Flash SOP

v1.62

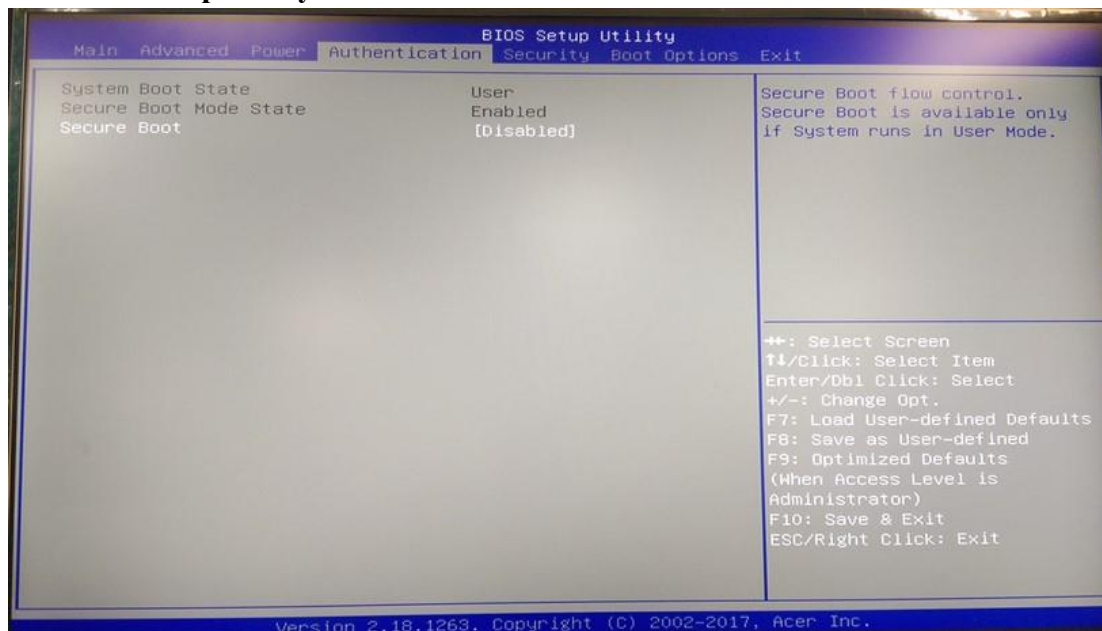
1. Please put the EFI shell relating file to a USB thumbdrive and the file path need to be follow as below. (E:\EFI\BOOT, E: is an example. Please check the path of your USB thumbdrive) –This is for EFI bootable device.



2. Power on the system. When you see the LOGO or hear one short beep, please press “Delete” to enter BIOS Setup Utility.
3. Choose “Authentication” page and select “Secure Boot” to disabled.



#### 4. BIOS Setup Utility will disable “Secure Boot”

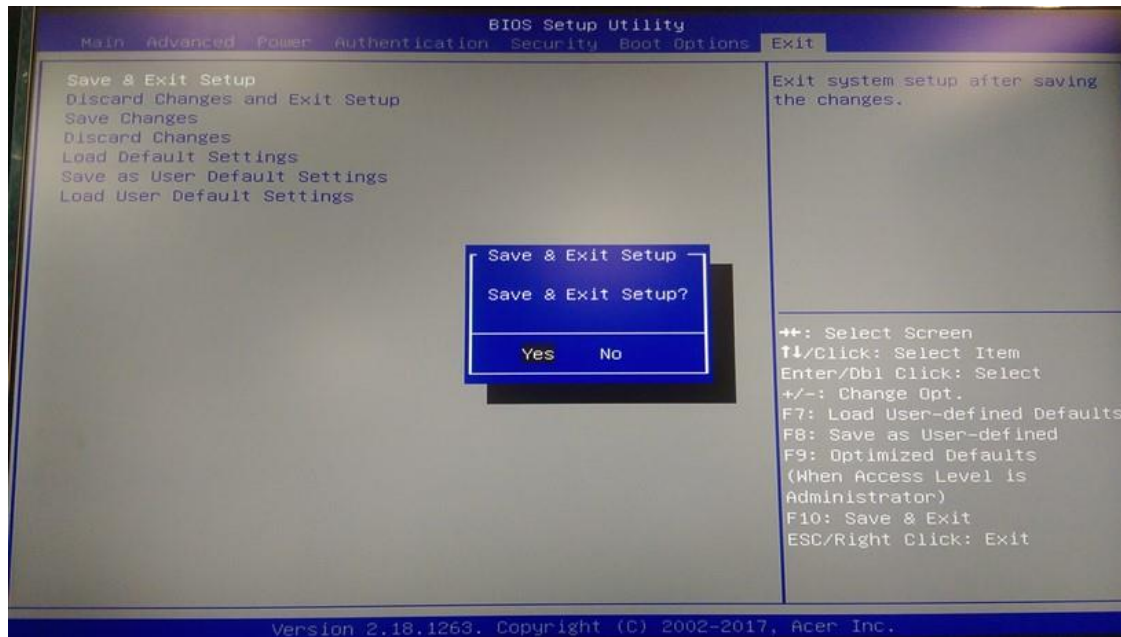


#### 5. Choose “Boot Options” page and select “Boot Menu” to Enabled.



#### 6. Choose “Exit” page and select “Save & Exit Setup” and press “Enter”.

#### 7. Select “Yes” to restart.

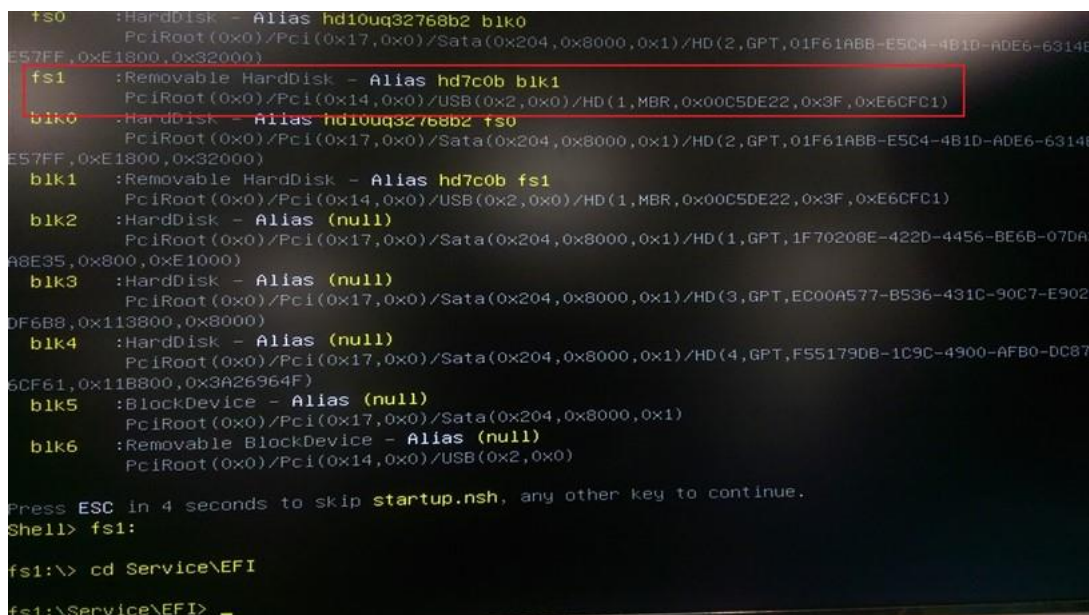


8. Press hot key F12 to enter Boot Menu, and select EFI USB thumbdrive.

9. Under the EFI system, and choose the Removable BlockDevice group  
( the Removable BlockDevice location is dynamic.)

E.g. In this figure, users should key in fs1: in Shell command line.

10. Use Type “CD” “Your package folder name” into EFI folder





## 11. Type flash.nsh, and use it to flash the ROMs.

```
fs0 :HardDisk - Alias hd10uq32768b2 fs0
PciRoot(0x0)/Pci(0x17,0x0)/Sata(0x204,0x8000,0x1)/HD(2,GPT,01F61ABB-E5C4-4B1D-ADE6-E57FF,0xE1800,0x32000)
fs1 :Removable HardDisk - Alias hd7c0b blk1
PciRoot(0x0)/Pci(0x14,0x0)/USB(0x2,0x0)/HD(1,MBR,0x00C5DE22,0x3F,0xE6CFC1)
blk0 :HardDisk - Alias hd10uq32768b2 fs0
PciRoot(0x0)/Pci(0x17,0x0)/Sata(0x204,0x8000,0x1)/HD(2,GPT,01F61ABB-E5C4-4B1D-ADE6-E57FF,0xE1800,0x32000)
blk1 :Removable HardDisk - Alias hd7c0b fs1
PciRoot(0x0)/Pci(0x14,0x0)/USB(0x2,0x0)/HD(1,MBR,0x00C5DE22,0x3F,0xE6CFC1)
blk2 :HardDisk - Alias (null)
PciRoot(0x0)/Pci(0x17,0x0)/Sata(0x204,0x8000,0x1)/HD(1,GPT,1F70208E-422D-4456-BE6B-0A8E35,0x800,0xE1000)
blk3 :HardDisk - Alias (null)
PciRoot(0x0)/Pci(0x17,0x0)/Sata(0x204,0x8000,0x1)/HD(3,GPT,EC00A577-B536-431C-90C7-50F6B8,0x113800,0x8000)
blk4 :HardDisk - Alias (null)
PciRoot(0x0)/Pci(0x17,0x0)/Sata(0x204,0x8000,0x1)/HD(4,GPT,F55179DB-1C9C-4900-AFB0-15CF61,0x11B800,0x3A26964F)
blk5 :BlockDevice - Alias (null)
PciRoot(0x0)/Pci(0x17,0x0)/Sata(0x204,0x8000,0x1)
blk6 :Removable BlockDevice - Alias (null)
PciRoot(0x0)/Pci(0x14,0x0)/USB(0x2,0x0)

Press ESC in 4 seconds to skip startup.nsh, any other key to continue.
Shell> fs1:

fs1:\> cd Service\EFI

fs1:\Service\EFI> FLASH.nsh
```

## 12. We will see the following actions.

```
blk2 :HardDisk - Alias (null)
PciRoot(0x0)/Pci(0x17,0x0)/Sata(0x204,0x8000,0x1)/HD(2,GPT,6EB8D185-BAB0-4B09-86DA-2D038DF87298,0x32800,0x8000)
blk3 :HardDisk - Alias (null)
PciRoot(0x0)/Pci(0x17,0x0)/Sata(0x204,0x8000,0x1)/HD(3,GPT,90379FD2-4D6D-4E0C-A34D-8F064CE92FAE,0x3A800,0x1D0A1000)
blk4 :HardDisk - Alias (null)
PciRoot(0x0)/Pci(0x17,0x0)/Sata(0x204,0x8000,0x1)/HD(4,GPT,B5A5434A-47EA-4B93-ABC6-B2505A87D0A8,0x1D0DB800,0x200000)
blk5 :HardDisk - Alias (null)
PciRoot(0x0)/Pci(0x17,0x0)/Sata(0x204,0x8000,0x1)/HD(5,GPT,8B419CB8-1111-4A23-8E12-48D7D19AE2E,0x1D2DB800,0x1D0A4800)
blk6 :BlockDevice - Alias (null)
PciRoot(0x0)/Pci(0x17,0x0)/Sata(0x204,0x8000,0x1)
blk7 :Removable BlockDevice - Alias (null)
PciRoot(0x0)/Pci(0x14,0x0)/USB(0x0,0x0)

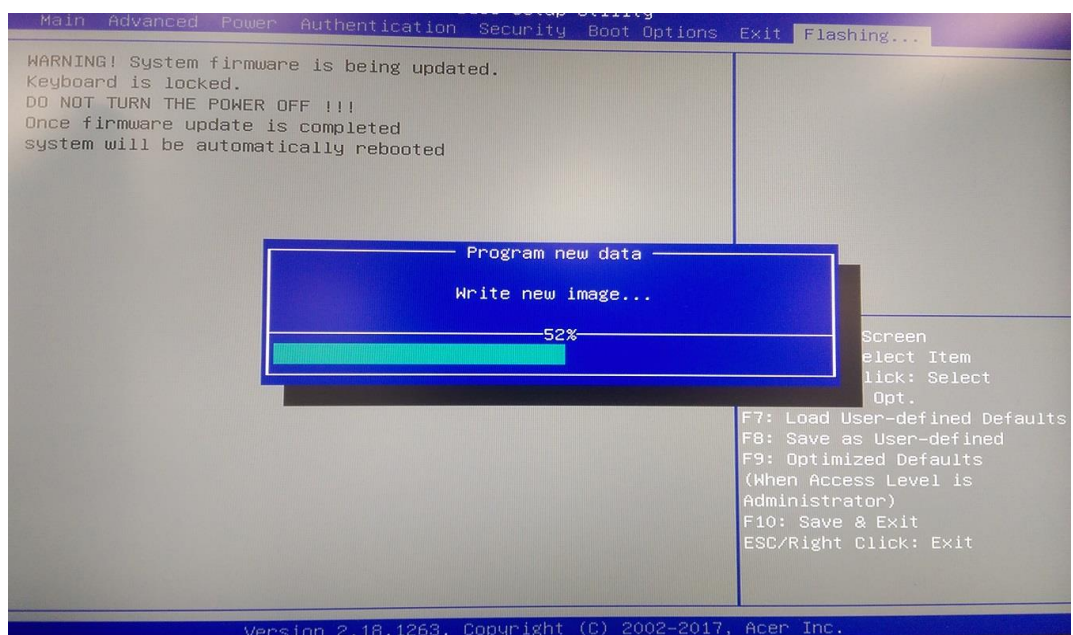
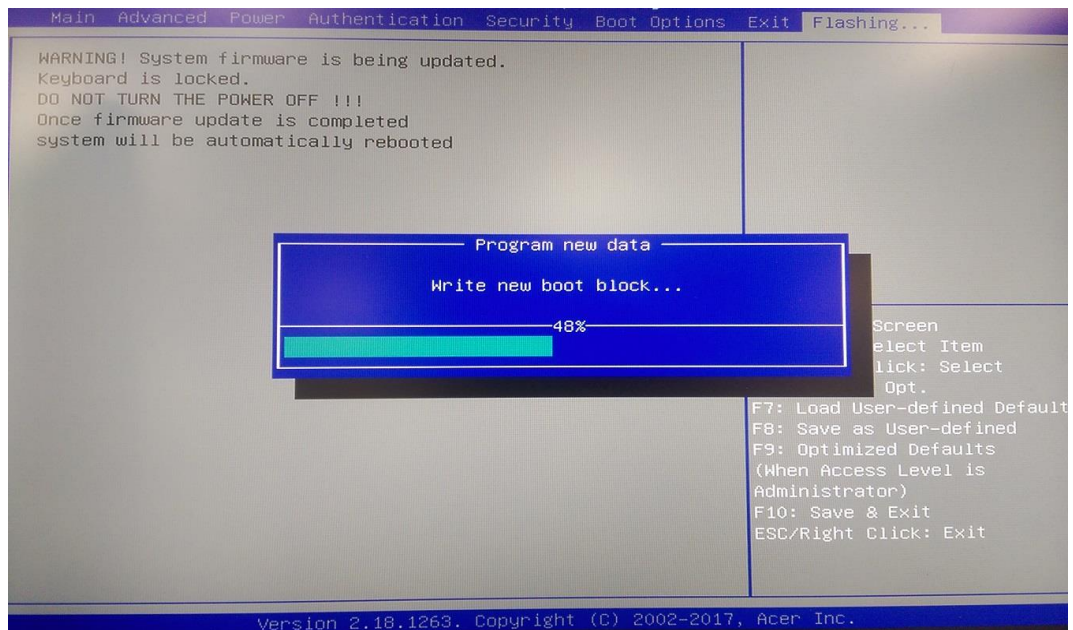
Press ESC in 5 seconds to skip startup.nsh, any other key to continue.
Shell>
Shell>
Shell> fs1:

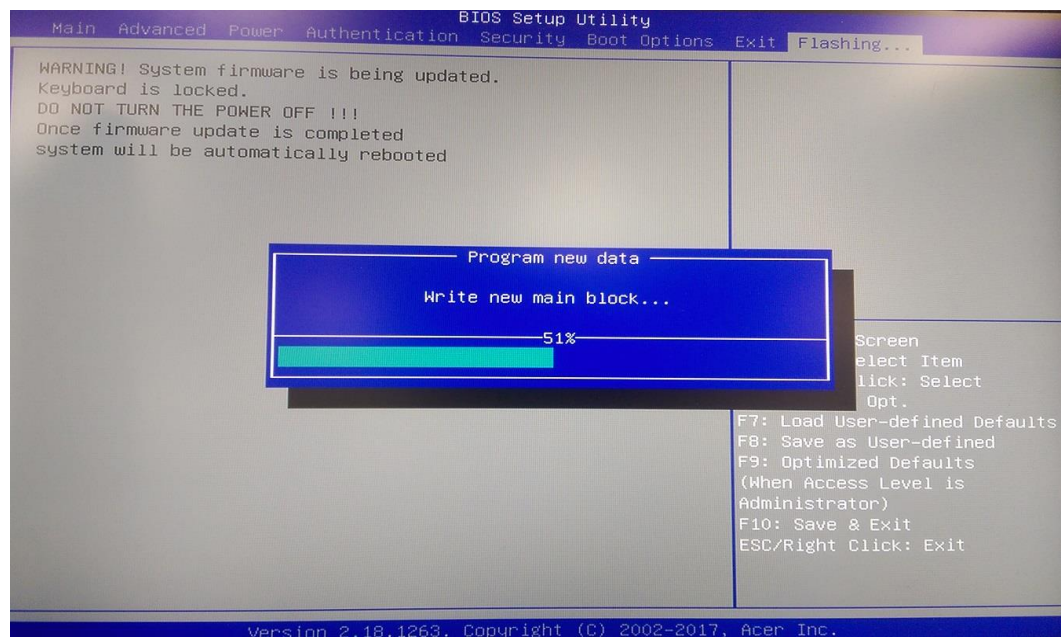
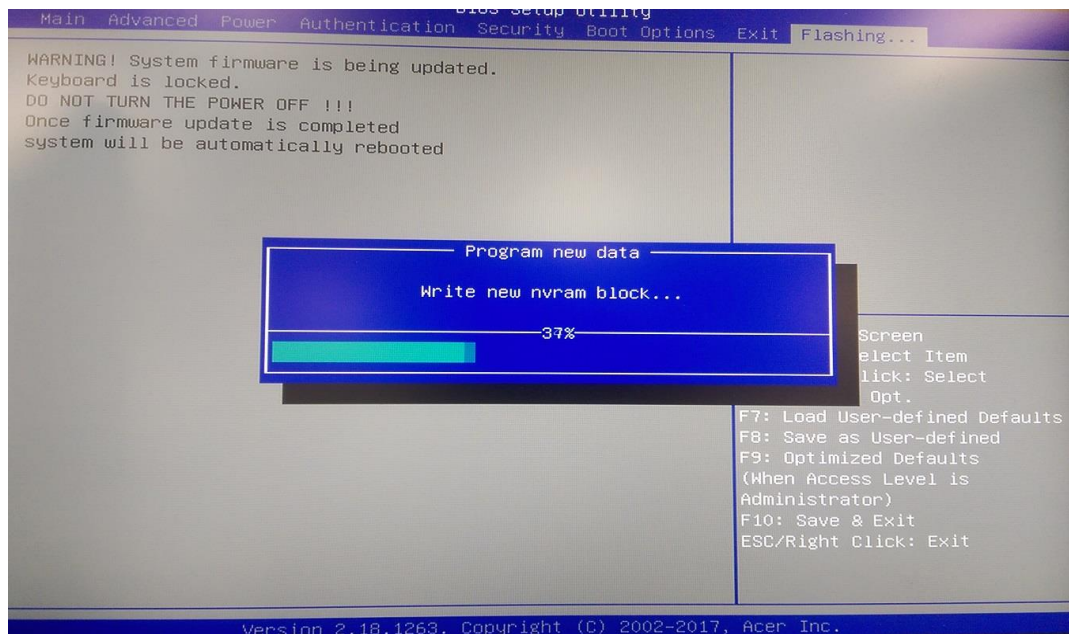
fs1:\> cd Service\EFI

fs1:\Service\EFI> FLASH.nsh
FLASH.nsh> AfuEfix64 ..\ROM\R01-A0.cap /P /B /N /R /MEUL /CAPSULE /Q
+-----+
|               AMI Firmware Update Utility v5.09.01.1317               |
|               Copyright (C)2017 American Megatrends Inc. All Rights Reserved.               |
+-----+
```

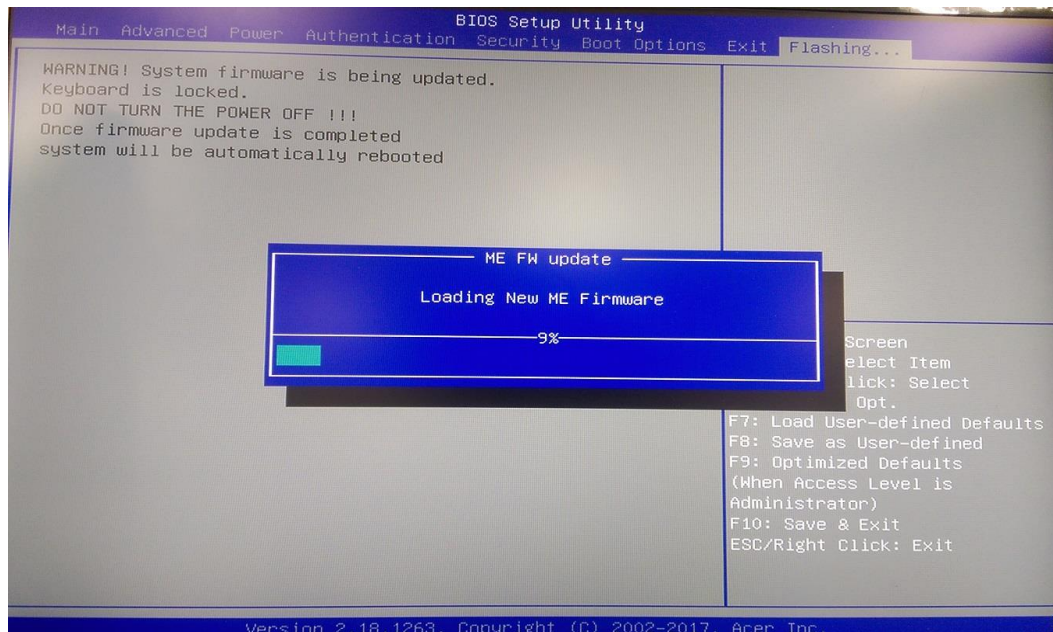
## 13. Wait Afu Tools load BIOS&ME,Then Auto Power off

## 14. System Auto Power on into BIOS “Flashing”





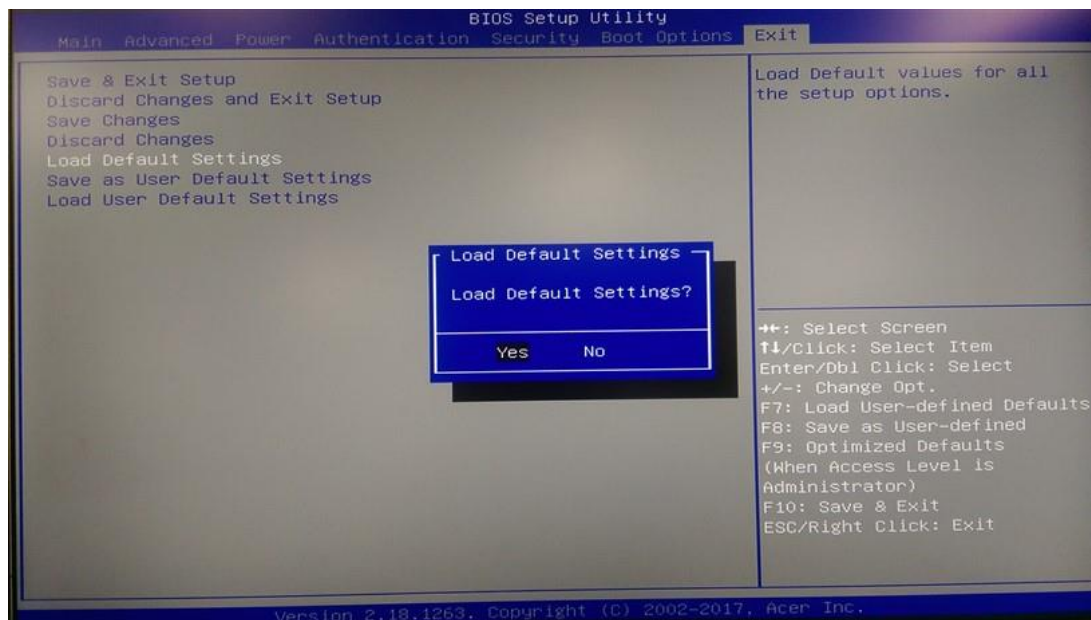




Wait it completed, Auto reboot

15. Boot system. Please press “Delete” to enter BIOS Setup Menu.

16. Select “Load Default Setting” and press “Enter”. Select “Yes” to load default settings.



17. Select “Save & Exit Setup” and press “Enter”.

18. Select “Yes” to restart.

