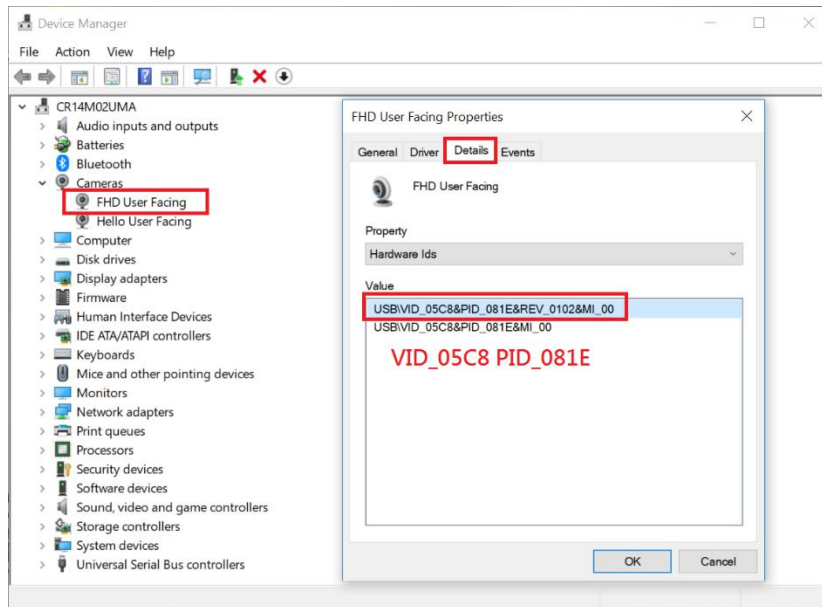
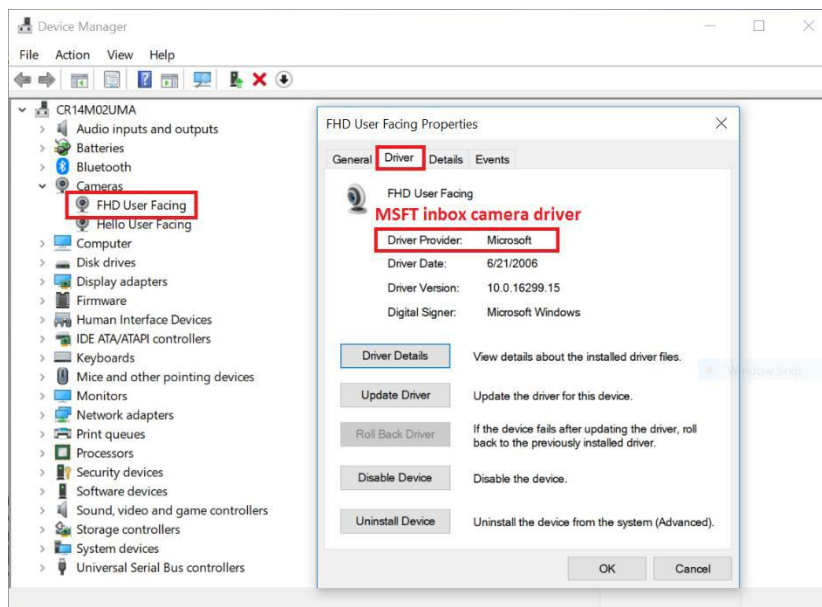


# FX23FF-624H-2 WHQL Driver Install SOP

## 1. Confirming device identification in device manager **FX23FF-624H-2 VID\_05C8 PID\_081E**



## 2. Enter Driver option to confirm MSFT inbox camera driver or Vendor driver, **If vendor driver is removed first.**

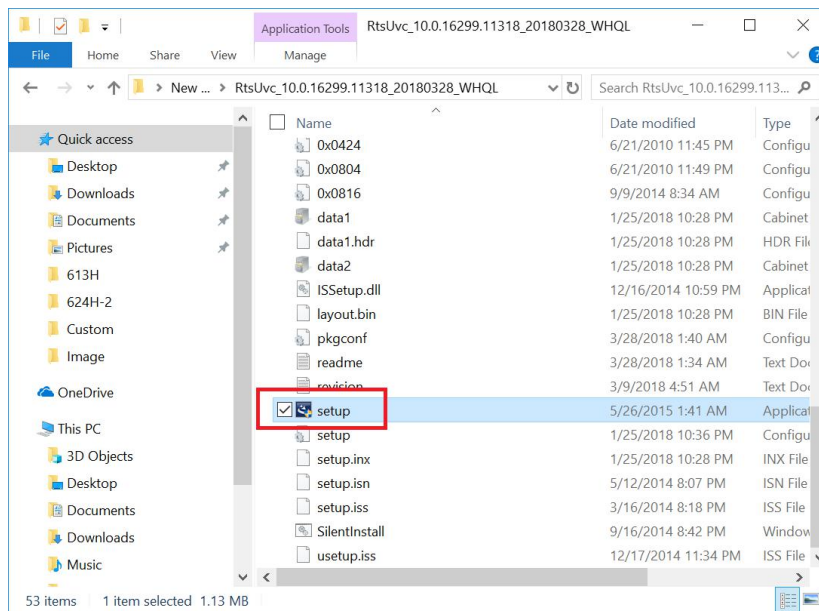


### 3. Open 10.0.16299.11318\_20180328\_WHQL driver files.

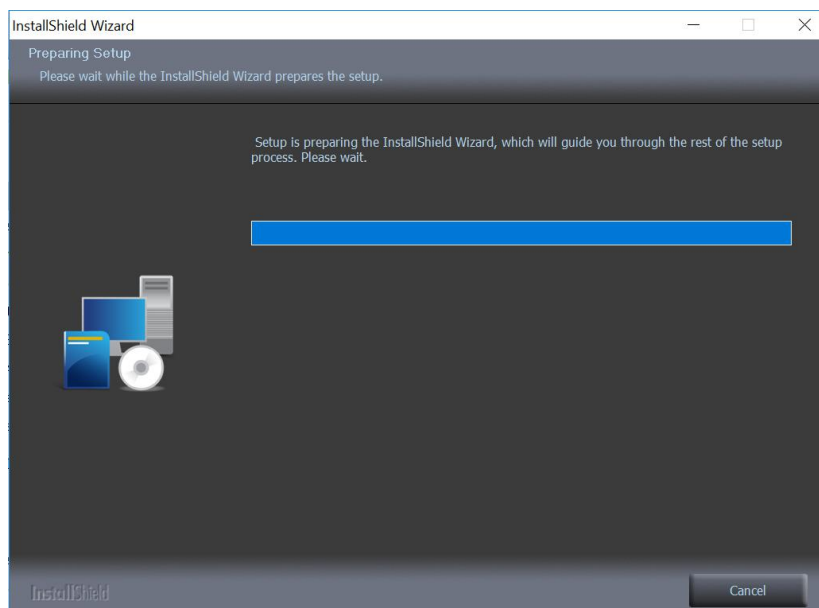


RtsUvc\_10.0.162  
99.11318\_20180  
328\_WHQL

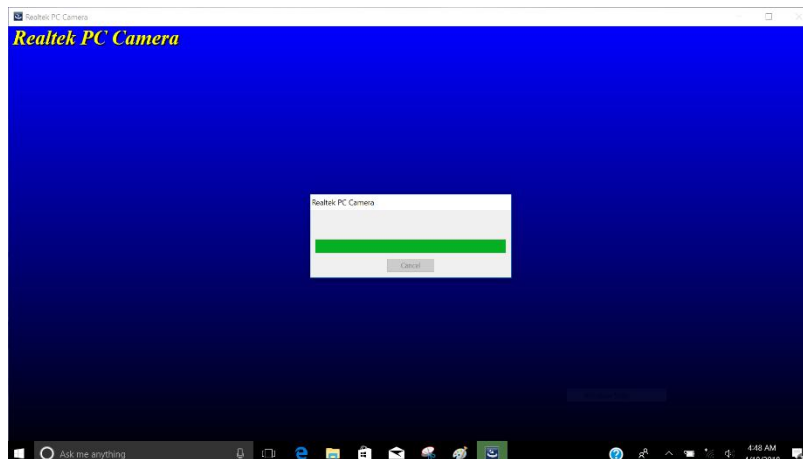
### 4. Carried out setup.



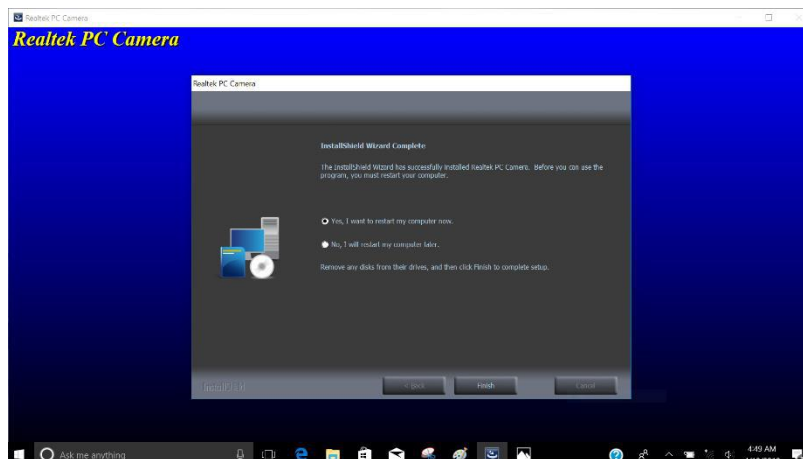
### 5. Show installshield wizard.



## 6. Realtek PC Camera installing.



## 7. The installation had complete please restart.



## 8. Confirmed by the device manager .

