

ConceptD

User Manual

ConceptD CM100

HDMITM
HIGH-DEFINITION MULTIMEDIA INTERFACE

© 2020. All Rights Reserved.
Desktop Computer Covers:
Tower models
This revision: Jan 2020 V1.00



Important

This manual contains proprietary information that is protected by copyright laws. The information contained in this manual is subject to change without notice. Images provided herein are for reference only and may contain information or features that do not apply to your computer. Acer Group shall not be liable for technical or editorial errors or omissions contained in this manual.

Table of Contents

1. UPGRADING YOUR COMPUTER.....	5	Memory.....	15
Installation precautions.....	5	Memory configuration guidelines	15
ESD precautions	5	Removing a memory module	16
Required tools	5	Installing a memory module	17
Pre-installation instructions	6	Graphic board	18
Post-installation instructions	6	Removing the Graphic board	18
System Upgrade	7	Installing the Graphic board	20
Removing the left side system cover	7	M.2 SSD module	21
Installing the left side system cover	8	Removing the M.2 SSD module	21
Hard drives	9	Installing the M.2 SSD module	22
Removing the 3.5-inch hard drives	9		
Installing the 3.5-inch hard drives.....	12		

Upgrading your Computer

In this section, you will find:

- Instructions on how to replace a hardware component

1. UPGRADING YOUR COMPUTER

Installation precautions

Before you install any computer component, we recommend that you read the following sections. These sections contain important ESD precautions along with pre-installation and post-installation instructions.

ESD precautions

Electrostatic discharge (ESD) can damage your processor, disk drives, expansion boards, and other components. Always observe the following precautions before you install a computer component:

1. Do not remove a component from its protective packaging until you are ready to install it.
2. Wear a wrist grounding strap and attach it to a metal part of the computer before handling components. If a wrist strap is not available, maintain contact with the computer throughout any procedure requiring ESD protection.

Required tools

In performing the component replacement process, you will need the following tools:

- Philips screwdriver
- Hex screwdriver
- Flat screwdriver
- Scissors



Note

The screws for the different components vary in size. During the disassembly process, group the screws with their corresponding components to avoid mismatches when putting back the components.

Pre-installation instructions

Always observe the following before you install any component:

1. Make sure that the ODD and card reader slot is empty.
2. Turn off the power to the computer and all peripherals.
3. Unplug the power cord from the computer.
4. Unplug the network cable and all connected peripheral devices from the computer.
5. Place the computer on a flat, steady surface.
6. Open your computer according to the instructions on Removing the rear system cover on page 7 and Removing the left side system cover on page 9.
7. See the following sections for specific instructions on the component you wish to install.



Warning

Not turning off the computer properly before you start installing the components may cause serious damage. Do not attempt the procedures described in the following sections unless you are a qualified service technician.

Post-installation instructions

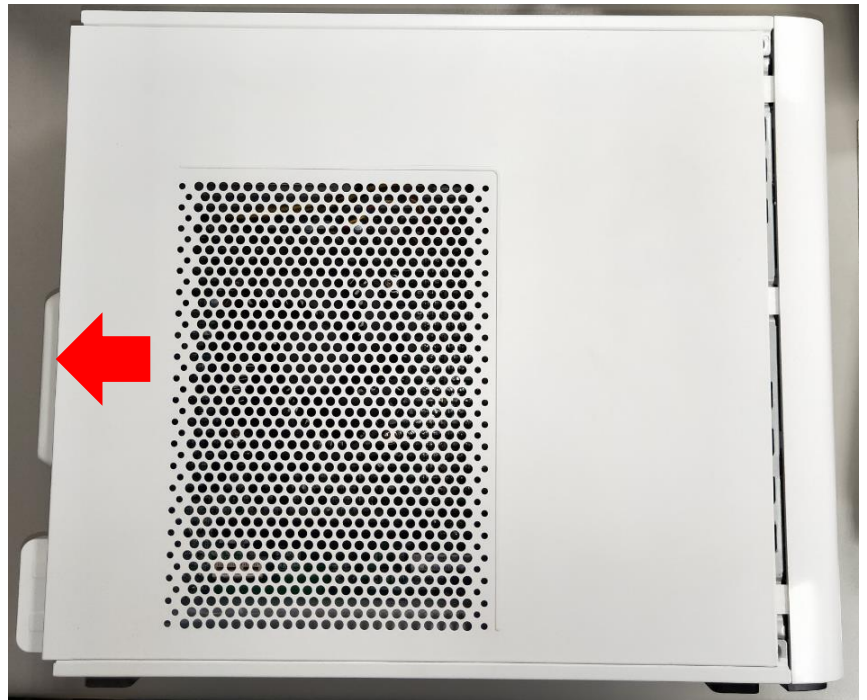
Observe the following after installing a computer component:

1. See to it that the components are installed according to the step-by-step instructions in their respective sections.
2. Replace any expansion boards or peripherals that you removed earlier.
3. Replace the system covers. See Installing the left side system cover on page 10 and Installing the rear system cover on page 8.
4. Connect the necessary cables.
5. Turn on your computer.

System Upgrade

Removing the left side system cover

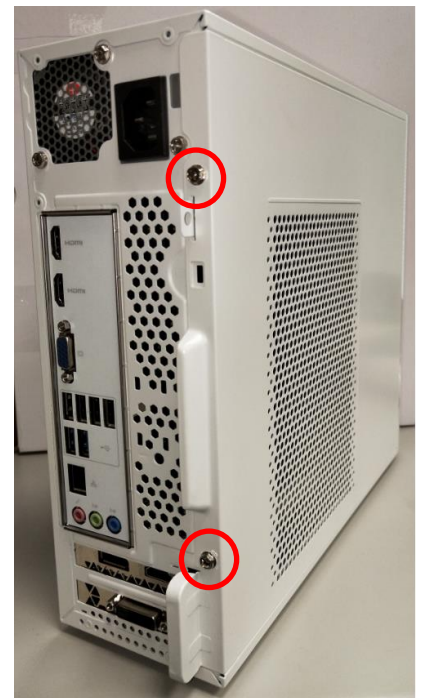
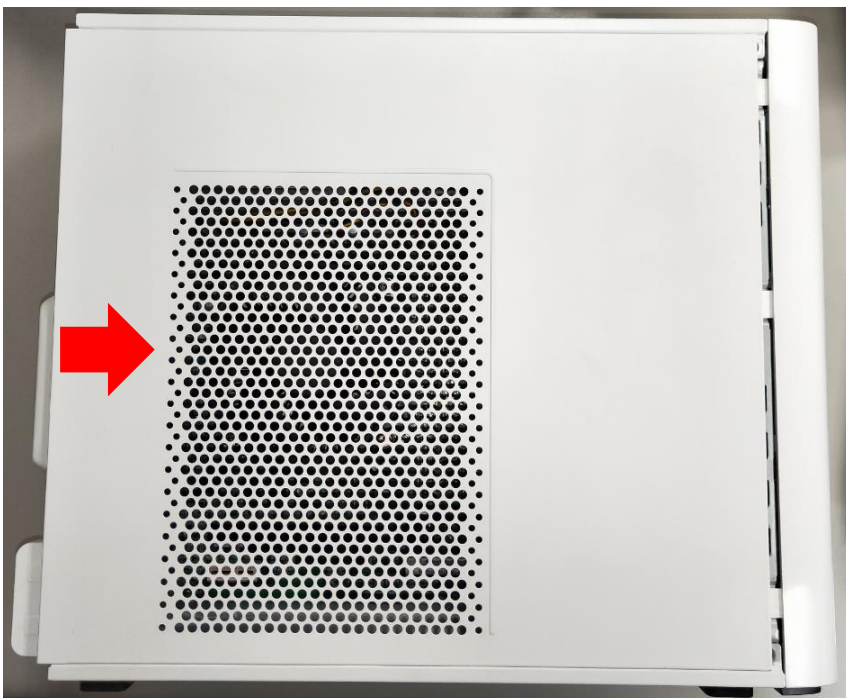
1. Before you proceed, make sure that you have turned off your computer and all peripherals connected to it. Read the Pre- installation instructions on page 6.
2. Remove the two screws that secure the system cover to the computer.
3. Slide the cover toward the back of the computer and pull away from the side of the computer.



4. Set the cover aside for re-installation later.

Installing the left side system cover

1. Align the cover to the sides of the computer and slide the cover toward the front of the computer.
2. Secure the cover with two screws.



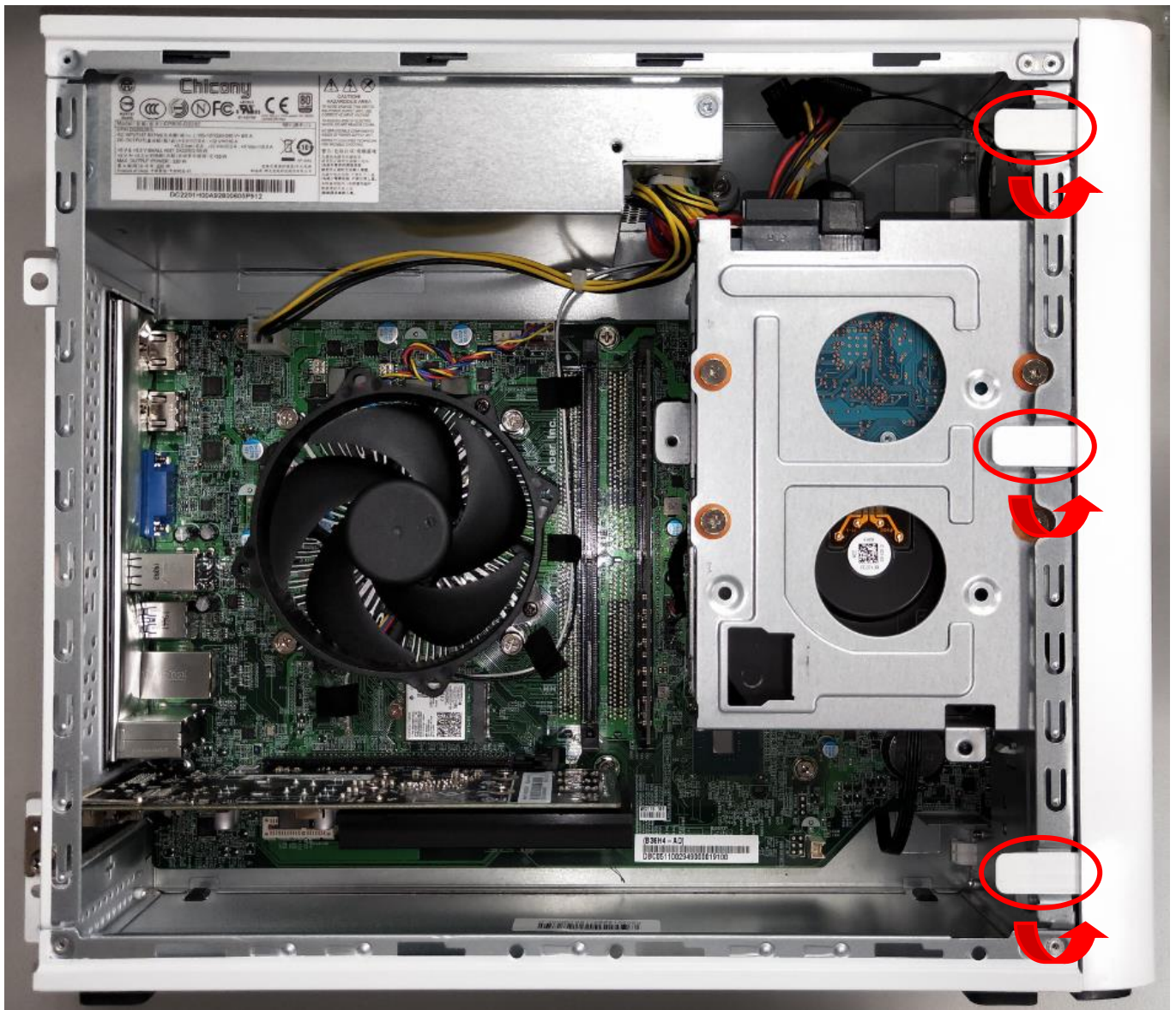
3. Observe the Post-installation instructions on page 6.

Hard drives

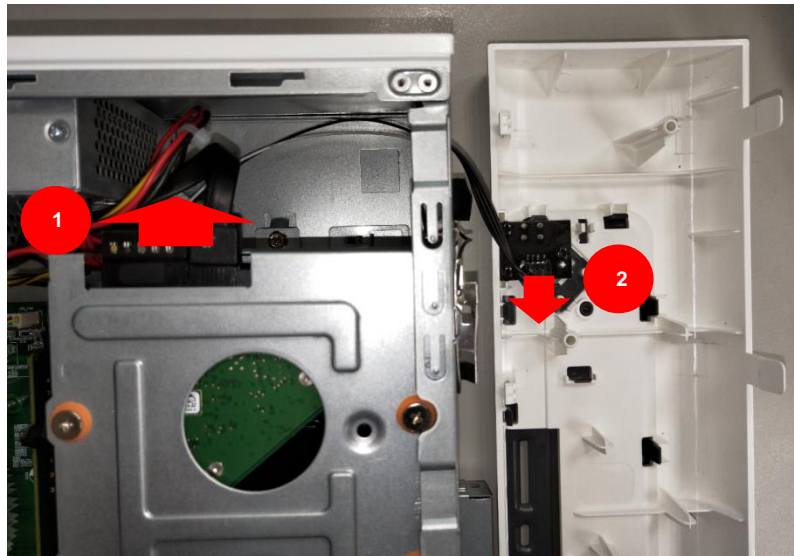
The computer supports installation of one 3.5-inch SATA hard drives in the internal HDD cage.

Removing the 3.5-inch hard drives

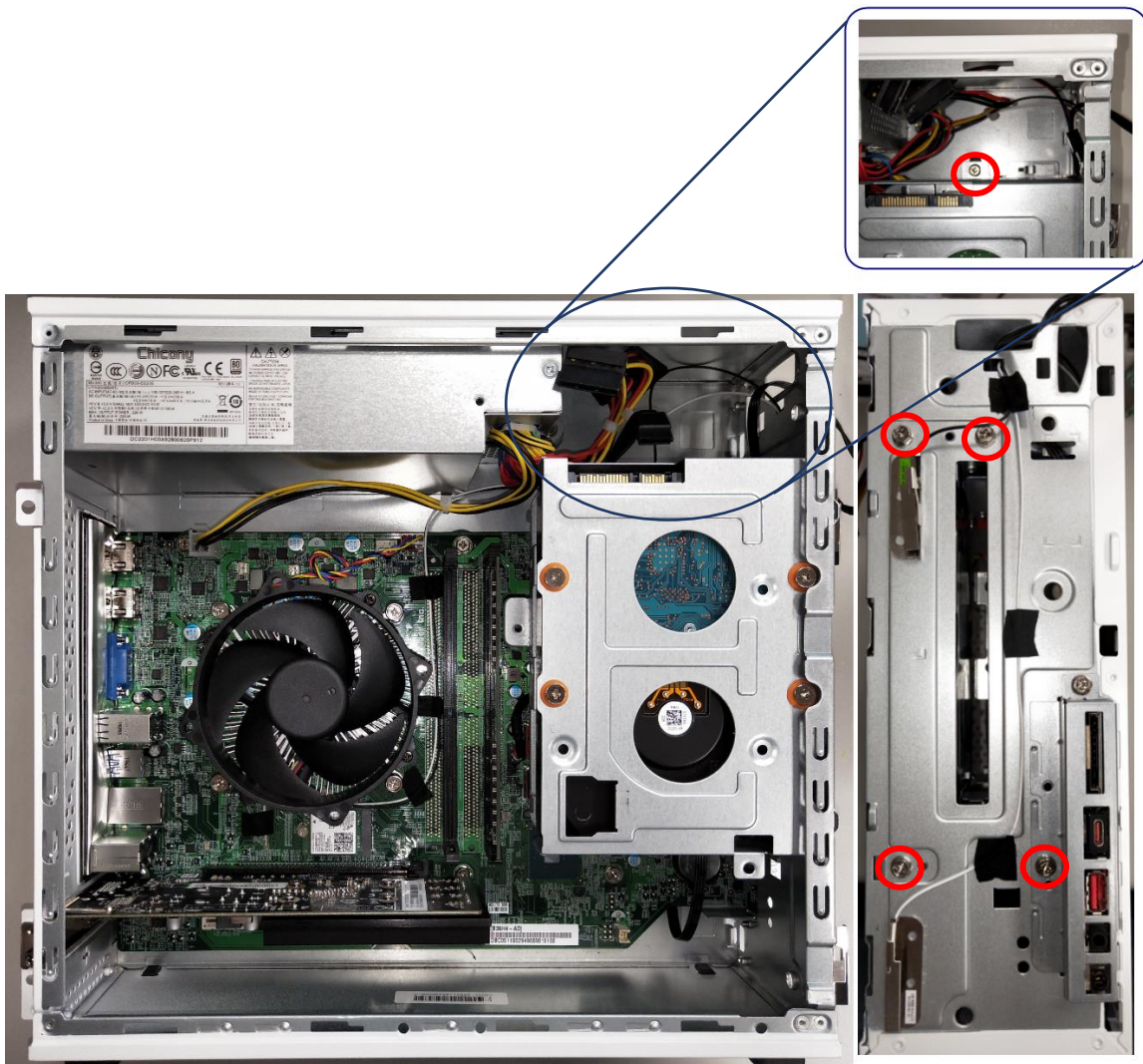
1. Perform Pre-installation instructions on page 6.
2. Remove the front bezel.



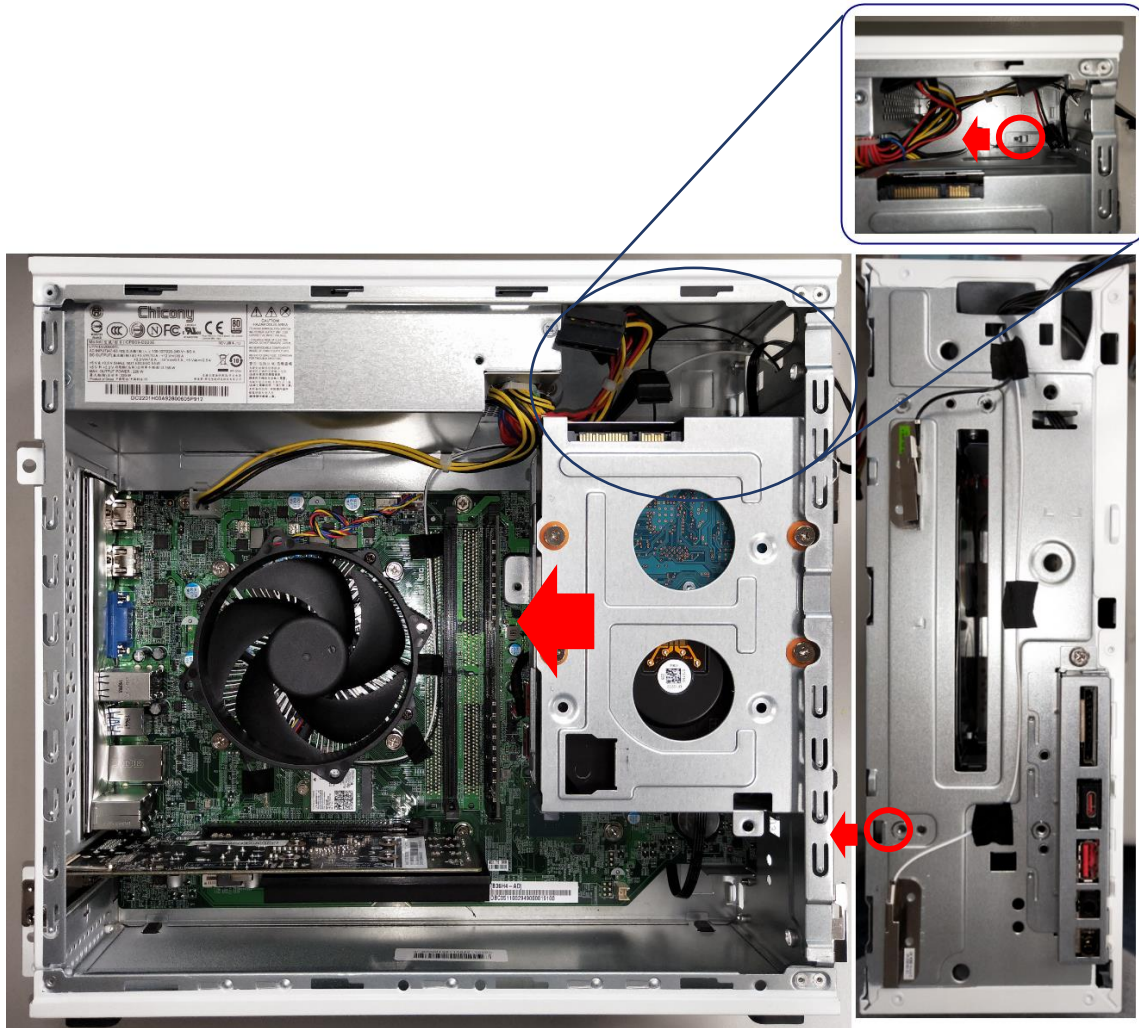
3. Disconnect the power & data cables (1) and the power button cable (2) .



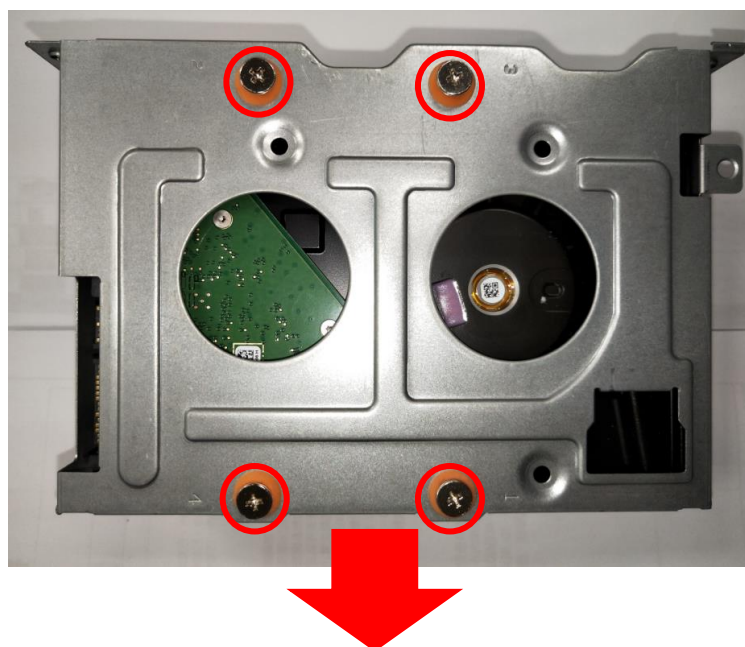
4. Remove five screws for HDD cage.



5. Release two mounting structure form the chassis.

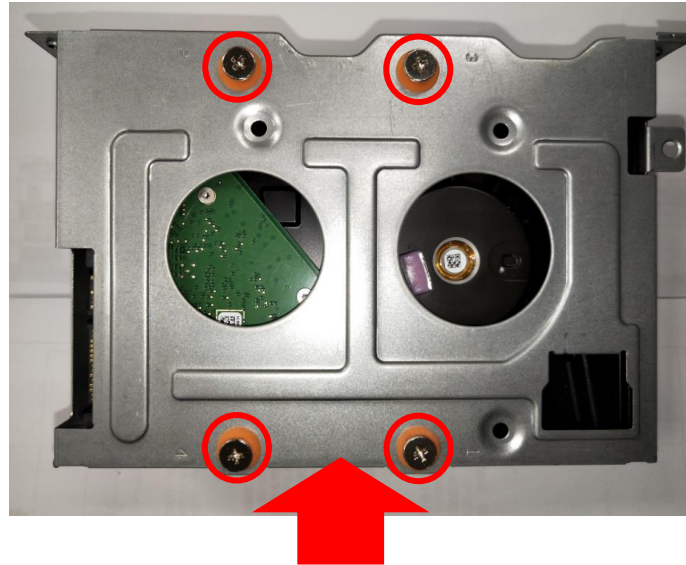


6. Remove the four screws that secure the hard drives to the bracket.

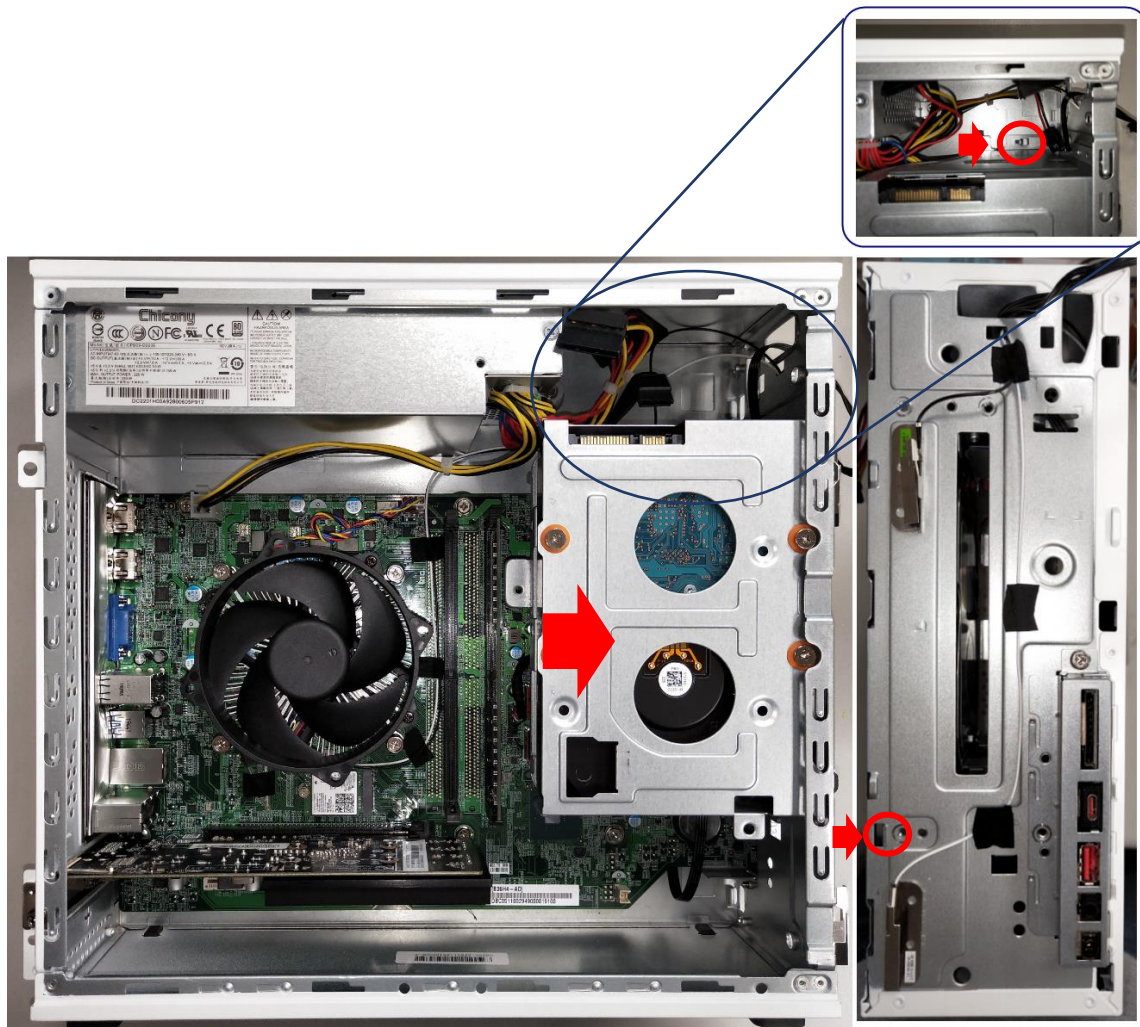


Installing the 3.5-inch hard drives

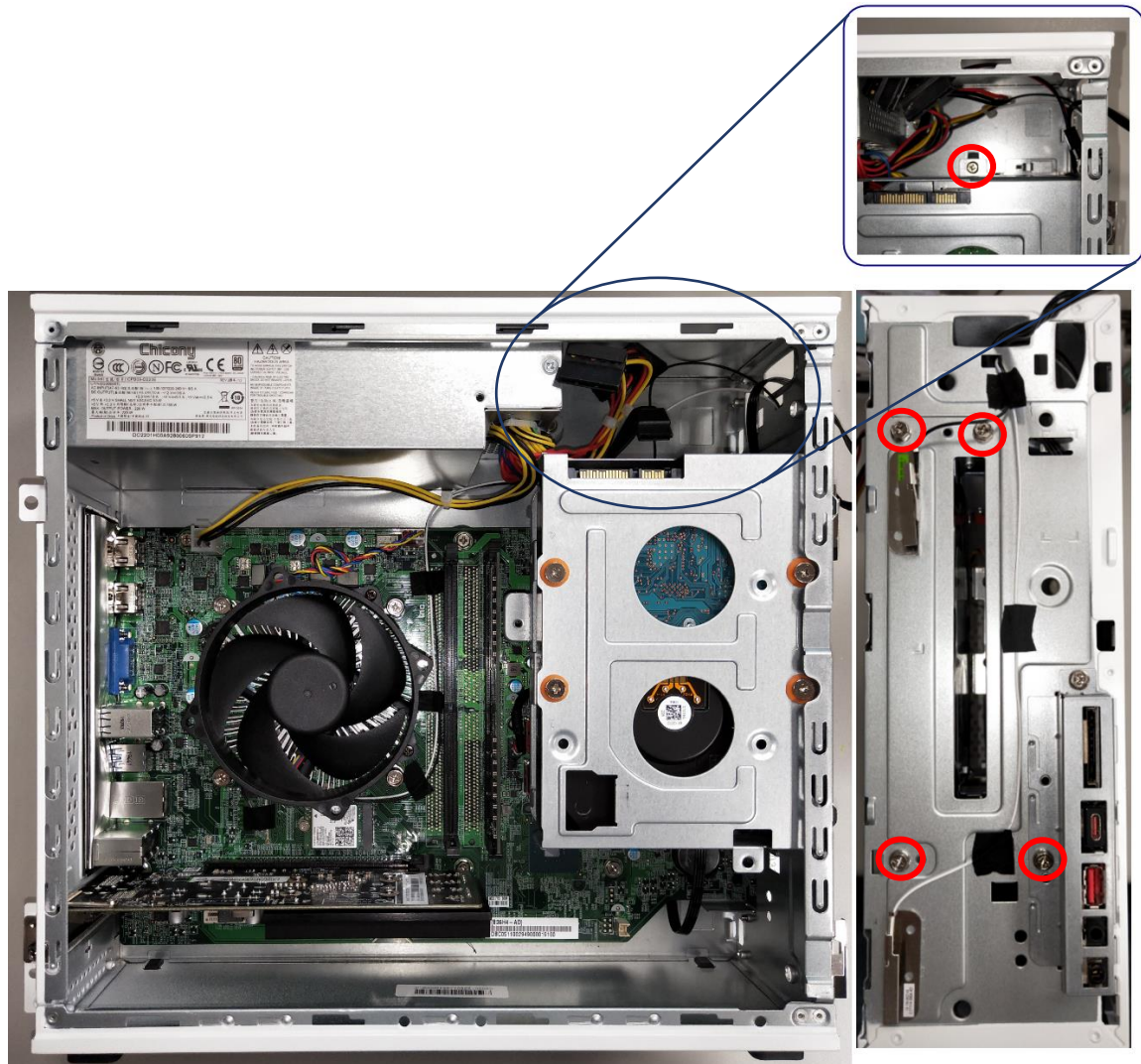
1. Remove the new hard drive from their packaging.
2. Insert the new hard drive into the bracket and secure the new hard drive with four screws.



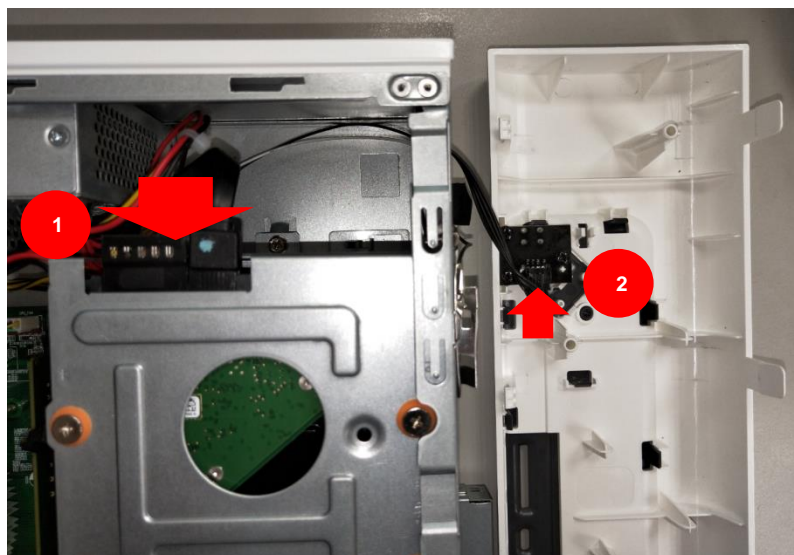
3. Installing HDD cage on chassis.



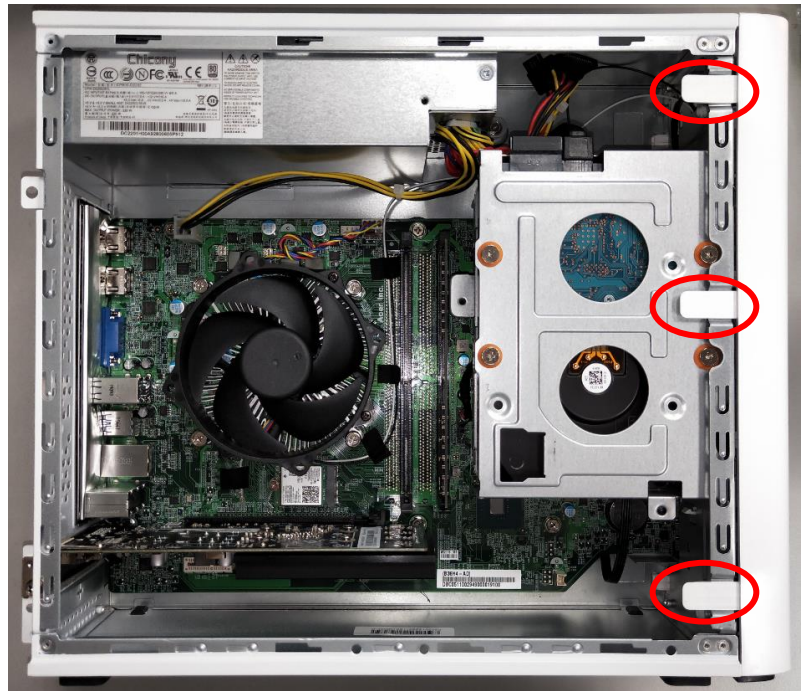
4. Fixed five screws for HDD cage.



5. Connect the power \ data cables (1) and the power button cable (2) .



6. Installing the front bezel.



7. Observe the Post-installation instructions on page 6.

Memory

The computer has four DDR4 U-DIMM slots that support up to 64 GB maximum system memory.

Memory configuration guidelines

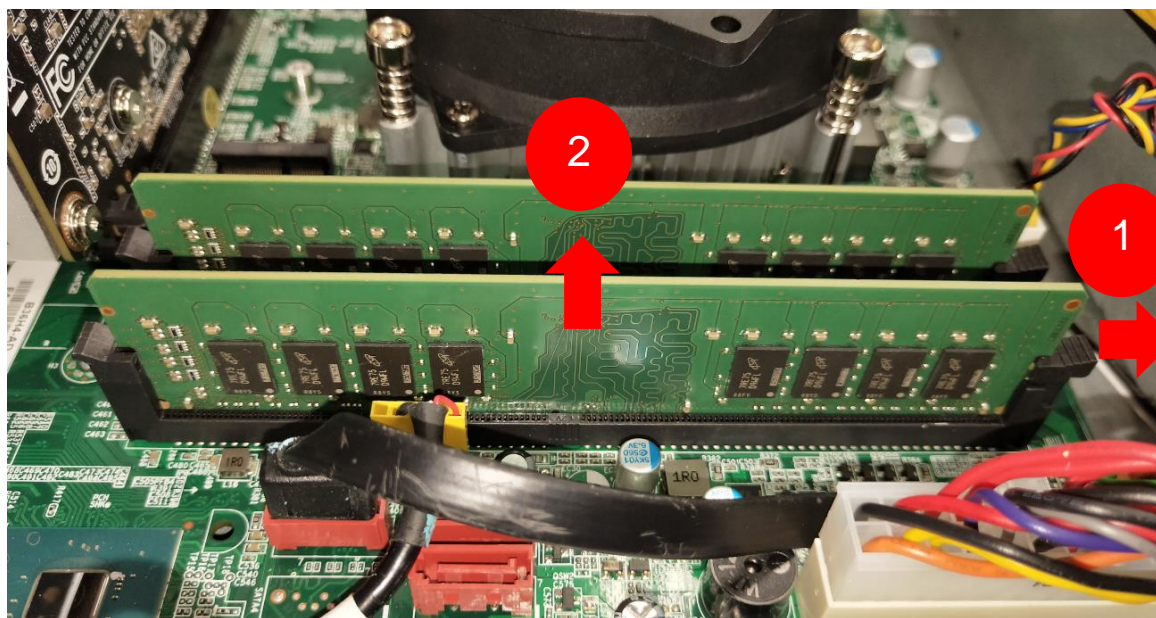


- To ensure data integrity, use only Acer-approved DDR4 2400 MHz or DDR4 2666 MHz type memory modules.
- Memory modules must be installed starting with DIMM1 slot.
- Always handle memory modules by its edges.
- When installing memory modules, populate the DIMM slots according to the table below.

Size	DIMM1	DIMM2
2GB	2GB	N/A
4GB	2GB	2GB
4GB	4GB	N/A
6GB	4GB	2GB
8GB	4GB	4GB
8GB	8GB	N/A
10GB	8GB	2GB
12GB	8GB	4GB
16GB	8GB	8GB
16GB	16GB	N/A
18GB	16GB	2GB
20GB	16GB	4GB
24GB	16GB	8GB
32GB	16GB	16GB

Removing a memory module

1. Perform Pre-installation instructions on page 6.
2. Press outward the holding clips on both sides of the DIMM slot outward to release the memory module (1).
3. Gently pull the memory module upward to remove it from the DIMM slot (2).



4. Repeat steps 2~3 to remove the other memory modules.

Installing a memory module



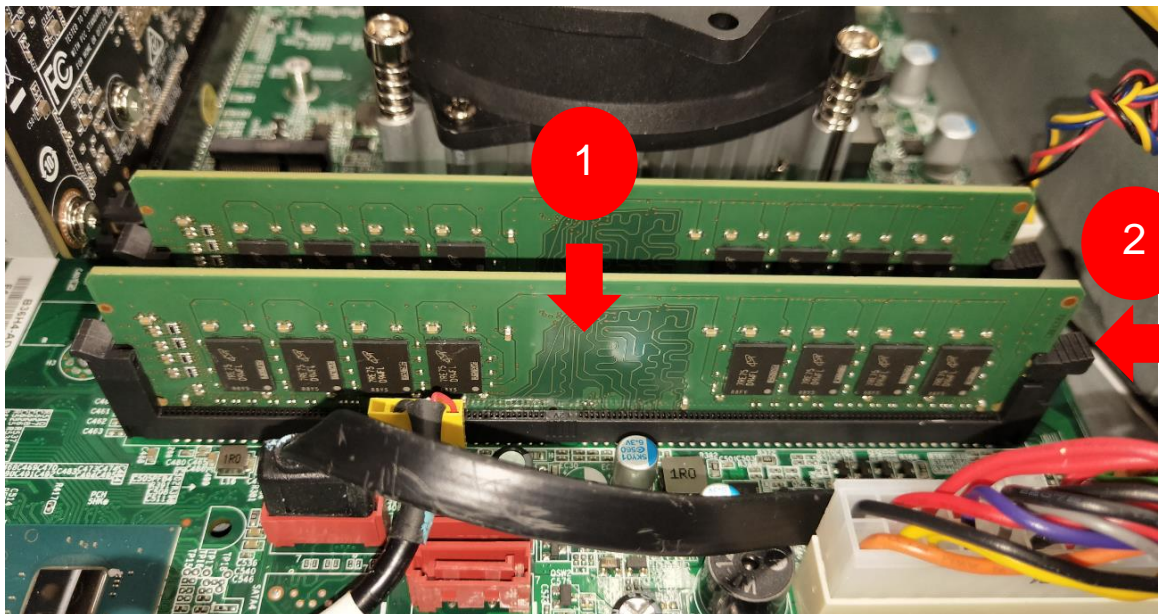
Note

DIMM slots on the mainboard must be installed only in certain configurations. Numbers next to DIMM slots correspond to installation sequence.

Be sure to install the memory module in DIMM1 slot followed by DIMM2 slot.

1. Select an empty DIMM slot.
2. Remove the new memory module from its packaging, handling it by the edges.
3. Align then insert the memory module into the DIMM slot (1).
4. Insert the memory to the slot until the retaining clips snap inward (2).

The module is keyed so it can only be inserted in one direction. If the module does not fit, make sure that the notch in the module lines up with the tab in the memory slot.



5. Repeat steps 1~4 to install the other memory modules.
6. Observe the Post-installation instructions on page 6.

Graphic board

The computer contains one or two Graphic boards installed in the PCIe x16 slots. The detail configuration will be differed by different models.

Removing the Graphic board

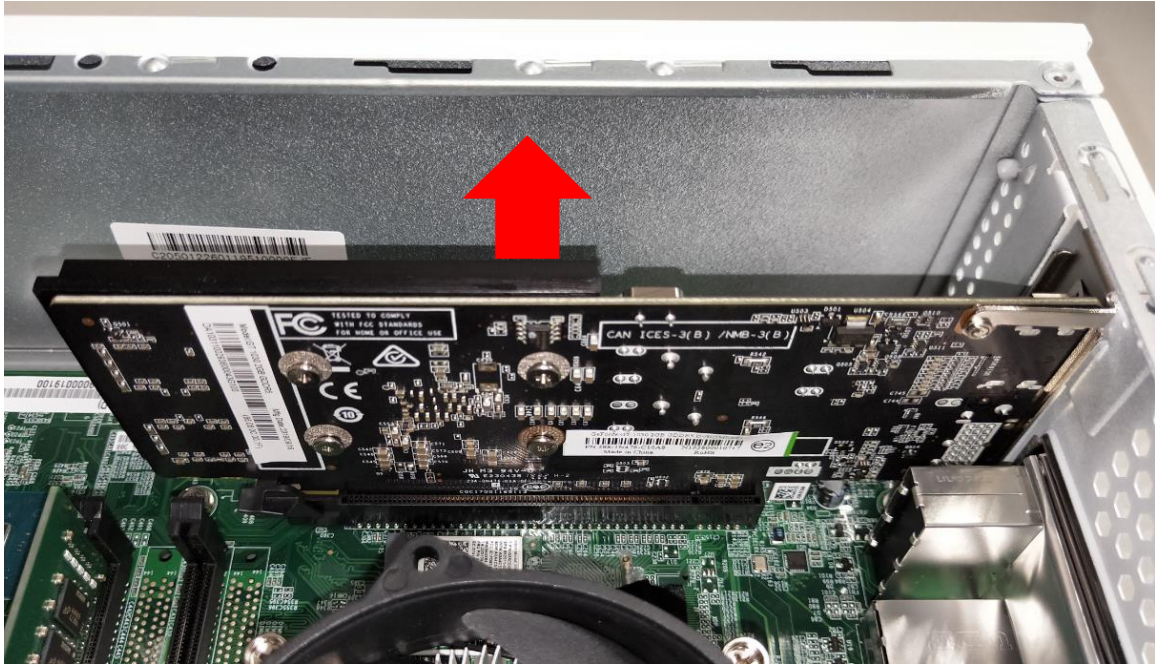
1. Perform Pre-installation instructions on page 6.
2. Remove the screw that secure the Graphic boards to the chassis.



3. Release the latch that secures the graphic board to the mainboard.



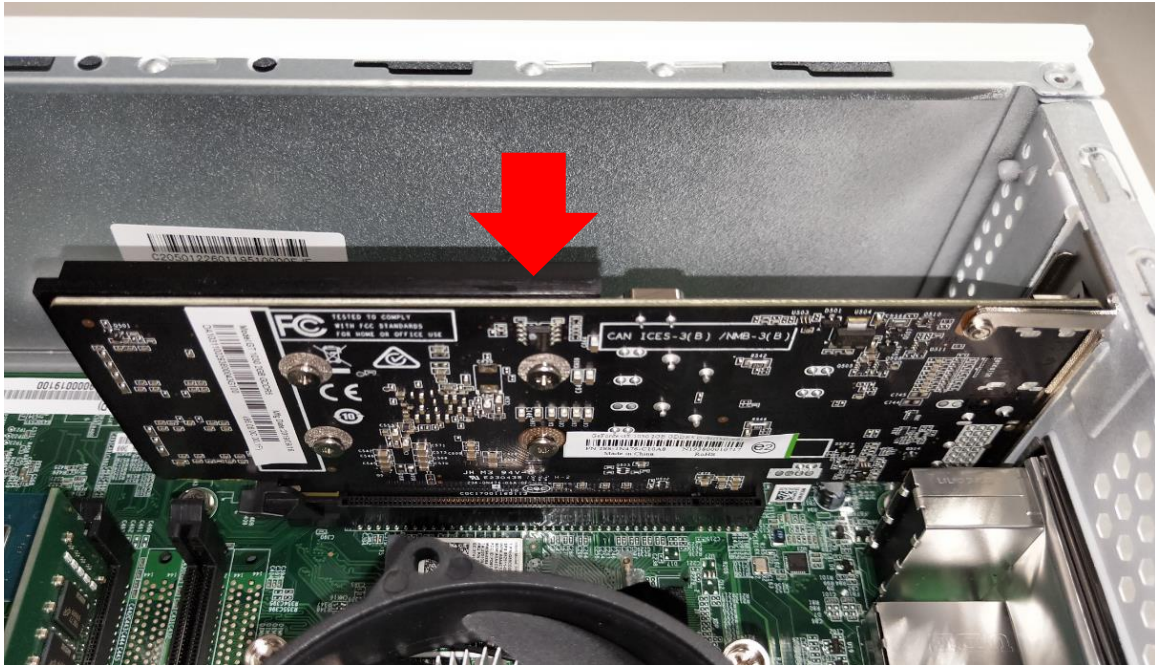
4. Detach the Graphic board from the PCIe x16 slot.



Installing the Graphic board

1. Remove the new graphic board from its packaging.
2. Insert the Graphic boards into the PCIe x16 slot and push it until it latches into place.

[Note] For replace/upgrade graphic board, please check the specification of graphic board & power supply first in order to make sure the graphic board and power supply could work.



3. Secure the Graphic board with screws.



4. Observe the Post-installation instructions on page 6.

M.2 SSD module

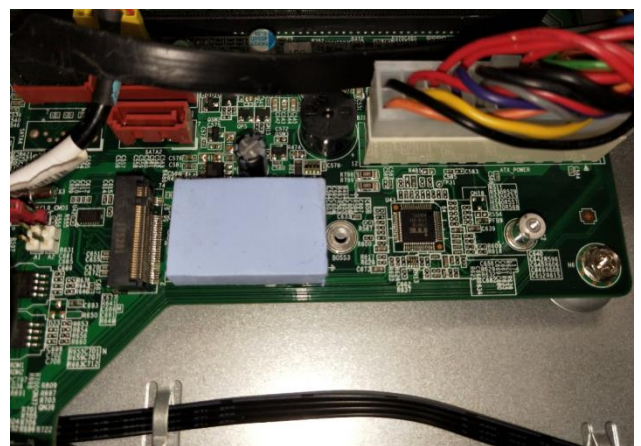
The computer contains one M.2 SSD module installed in the M.2 PCIe slot.

Removing the M.2 SSD module

1. Perform Pre-installation instructions on page 6.
2. Remove the 3.5-inch hard drives. See removing the 3.5-inch hard drives.
3. Remove the screws that secure the M.2 SSD module from the mainboard.



4. Detach the M.2 SSD module from the mainboard.



Installing the M.2 SSD module

1. Remove the new M.2 SSD module from its packaging.
2. Insert the M.2 SSD module into its slot in the mainboard.



3. Secure the M.2 SSD module and mainboard with screws.



4. Replace the 3.5-inch hard drives. See installing the 3.5-inch hard drives.
5. Observe the Post-installation instructions on page 6.