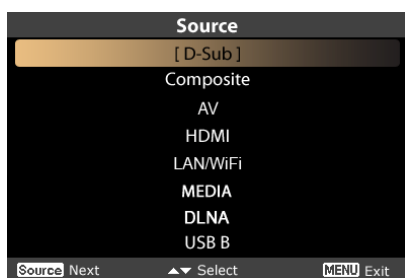


Acer projector provides powerful networking display (via source LAN/WiFi, DLNA), multimedia display (via source MEDIA), and USB display (via source USB B) functions.

A. Projector Settings

Press the **Source** button on the projector keypad or remote control. You will see a source list allowing you to choose your desired source.



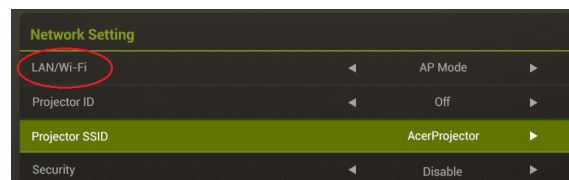
- Insert the USB WiFi adapter into the USB A port or plug in the LAN cable (for selected models with LAN port) for WiFi Display & DLNA functions.



- You can play multi-media contents from RAM, USB handy drive, SD hard via the MEDIA source.
- You can plug the mini USB cable into the USB B port for USB display.

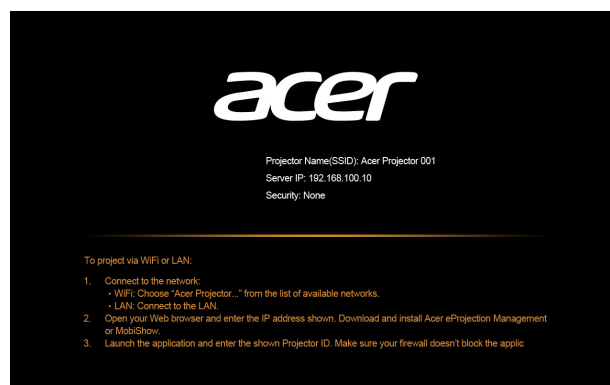
WiFi Display

Select the source **"LAN/WiFi"**, and you will see the WiFi Display welcome screen. Acer Projector can play the following 3 roles: AP Mode (Default), Client Mode or WiFi Direct by changing settings in the **Setup** → **LAN/WiFi** menu.



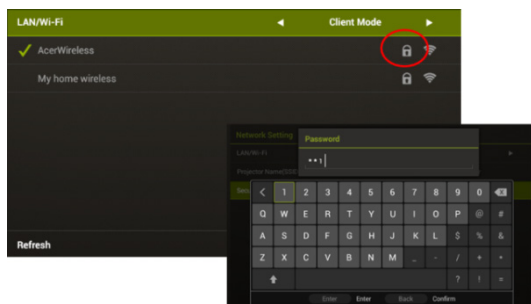
- (1) **Select AP Mode** in the LAN/Wi-Fi setting (the projector plays an AP role). Tap "DoWiFi" and you will see below splash screen. Check out below information: Projector ID (if enabled, a 4-digit random number will display on the upper-left corner of the screen), Projector Name (SSID, default name is **AcerProjector**), WiFi IP (default IP is **192.168.100.10**), Security (default is **None**), and LAN IP. Press **Apply/Enter** when you finish the adjustment.

Projector Name(SSID) : AcerProjectorXXX
WiFi IP : 192.168.100.10
Security : None (default)
LAN IP : 0.0.0.0 (if no LAN cable plugged in)





- (2) Select **Client Mode** in the LAN/WiFi setting, you will see below screen.
Please connect to an available AP and input password if necessary.



Then the splash screen displays with below information:

Connected AP Name(SSID) : Depended
Client IP : Depended
Security : Depended
LAN IP : 0.0.0.0 (if no LAN cable plugged in)

You can project the screen from your tablet or smartphone to the projector by using the application “eDisplay”. In Client mode, the projector is also able to access the internet.

- (3) Select **WiFi Direct** in the LAN/WiFi setting, and you can connect the projector to other WiFi Direct-certified devices. Below information will show on splash screen.

Projector Name : AcerProjectorXXX
WiFi Mode : WiFi Direct
WiFi Direct : On (Default is Off)

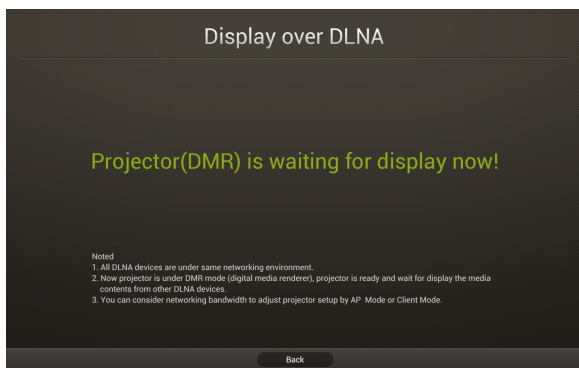
DLNA Mode

When the source “**DLNA**” selected, you can choose DMP or DMR mode after you complete the network settings (the same way as you do for WiFi Display).

Media Console (DMP) : You can tap the media libraries detected and play contents from the selected library.

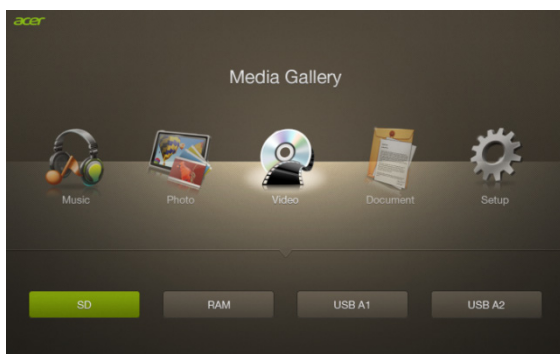


Media Display (DMR) : projector under the DMR mode (digital media renderer) is ready for displaying the contents from other DLNA devices.



MEDIA Mode

Select the source “**MEDIA**”, and there are 5 options for you to choose from Music, Photo, Video, Document, and Setup. You can play contents from RAM (Internal memory), USB storage devices, or SD card (for selected models).



USB Display

Select the source “**USB B**”, and you will see below main page for you to choose from USB storage (RAM) or USB display.

You can access the internal memory (RAM) via USB Storage (RAM) or do USB projection via USB Display.

Please make sure the USB cable is plugged in first.



For USB display, please install Acer_USB.exe on your NB and remember to **reboot** after the installation completes.

Below shortcut icon will be on the desktop of your NB.



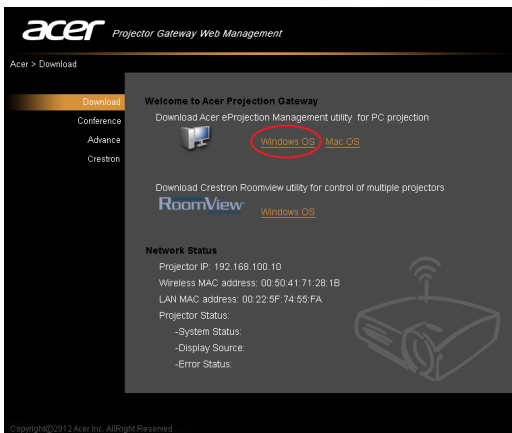
Double click on the shortcut, and you can mirror or extend your screen and enable/disable audio streaming.



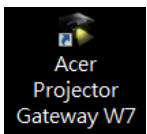
B. Device Installation (WiFi Display)

NB eDisplay (Windows & Mac OS)

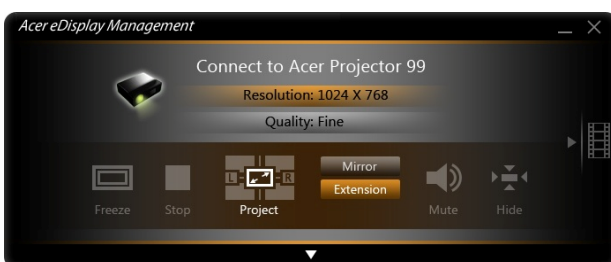
You can download the application (acer eDisplay Management) from CD or webpage (192.168.100.10) when the projector is in AP Mode.



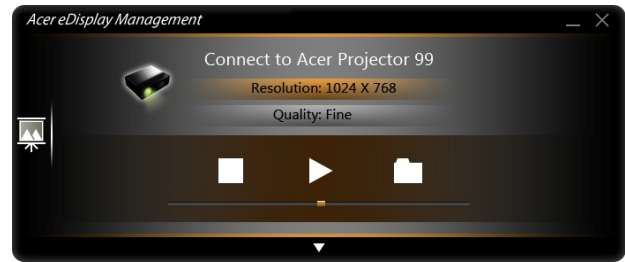
Click RUN and follow the wizard to install, you will get a shortcut **Acer Projector Gateway W7** on your desktop and execute it.



“Projection mode” supports “Full, L/R, 4-Split **Mirror** projection” & “Full, L/R, 4-Split **Extension** projection”, Audio On/Off, and controls the projected screen to be frozen or hidden.



“Video mode” supports video streaming.



Tablet & Smartphone eDisplay (Android & iOS)

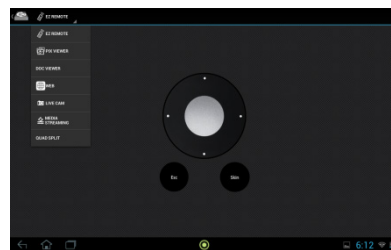
You can get the application “eDisplay” from Android’s Google Play or iOS’s Apple Store. Execute the app to project the small screen from your device to a bigger one via the projector.



Support the following functions: EZ Remote, Streaming Doc, Dropbox, Streaming Web, Pix Viewer, & Sketch.

Note :

1. Android 4.0 and above supported.
2. iOS 5.0 and above supported.
3. If you want to use Dropbox or Streaming Web, please set the projector to be in Client mode.



(Android eDisplay)



(iOS eDisplay)