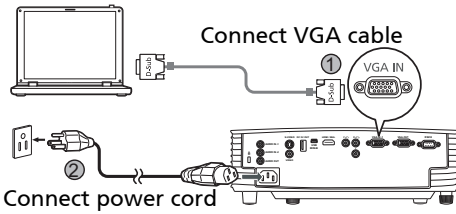


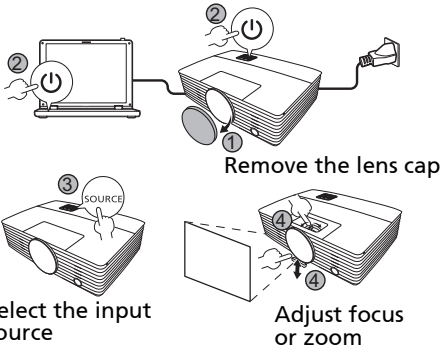
Quick Start

Connecting to a Computer



Powering On the Projector

Turn on the projector and computer

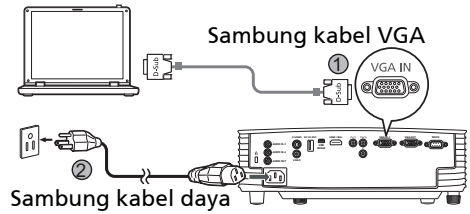


Powering Off the Projector

Press the power button twice.

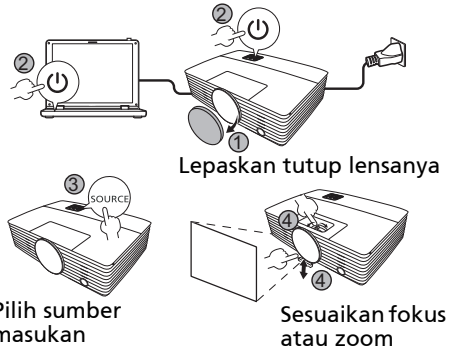
Mulai Cepat

Menyambung ke Komputer



Menyalakan Proyektor

Nyalakan proyektor dan komputer

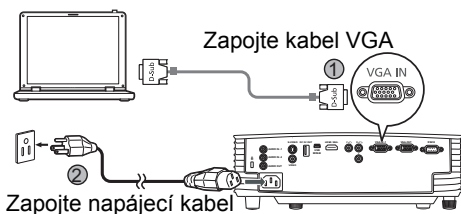


Mematikan Proyektor

Tekan tombol daya dua kali.

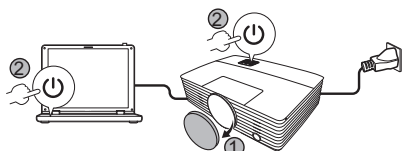
Stručná příručka

Připojení k počítači

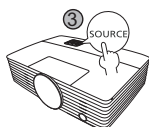


Zapnutí projektoru

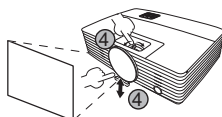
Zapněte projektor a počítač



Sejměte víčko objektivu



Vyberte zdroj vstupu



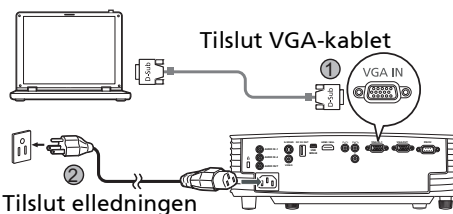
Upravte zaostření nebo zoom

Vypnutí projektoru

Stiskněte dvakrát tlačítko napájení.

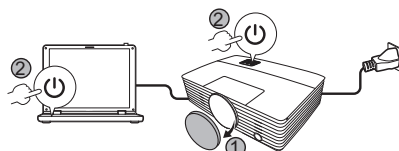
Hurtig start

Tilslutning til en computer

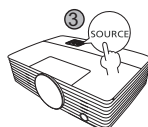


Tænd for projektoren

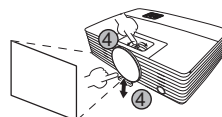
Tænd for projektoren og computeren



Fjern optikdækslet



Vælg indgangskilden



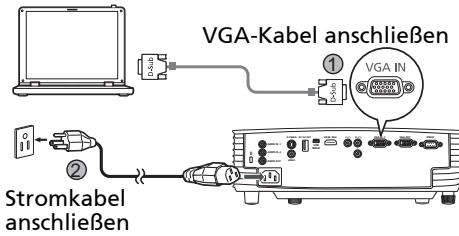
Juster fokus eller zoom

Sluk for projektoren

Tryk på tænd/sluk-knappen to gange.

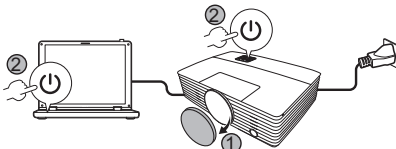
Kurzanleitung

Anschluss an einen Computer



Den Projektor einschalten

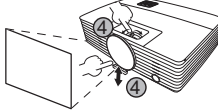
Den Projektor und Computer einschalten



Abnehmen der Schutzkappe



Auswahl der Eingabequelle



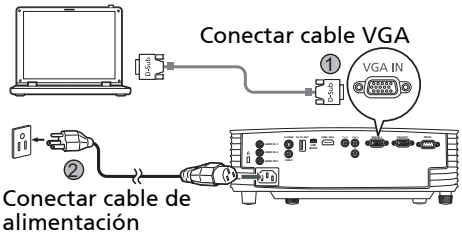
Fokus oder Zoom anpassen

Den Projektor ausschalten

Drücken Sie zwei Mal auf die Ein/Aus-Taste.

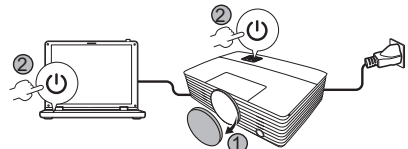
Inicio rápido

Conexión a un ordenador

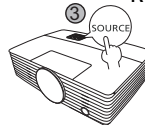


Encender el proyector

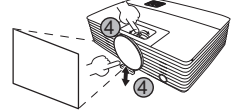
Encender el proyector y el ordenador



Retirar la cubierta de la lente



Seleccionar la fuente de entrada



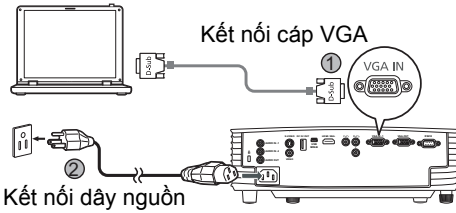
Ajustar en enfoque o zoom

Apagar el proyector

Pulsar dos veces el botón de energía.

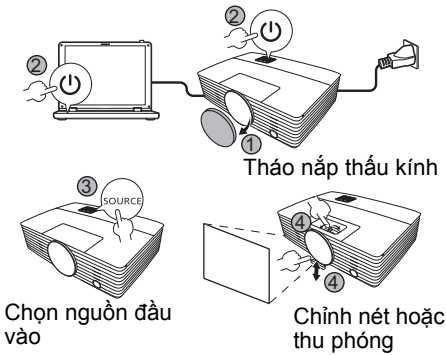
Sử Dụng Nhanh

Kết nối với Máy tính



Bật nguồn trên Máy chiếu

Bật máy chiếu và máy tính

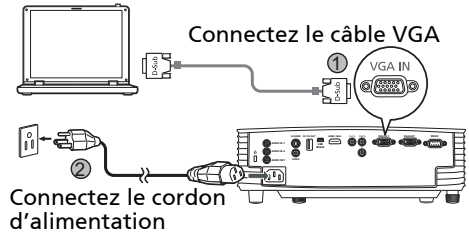


Tắt nguồn Máy chiếu

Bấm nút nguồn hai lần.

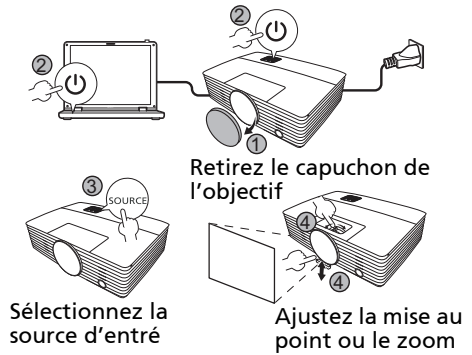
Démarrage rapide

Connecter un ordinateur



Allumer le projecteur

Allumez le projecteur et l'ordinateur

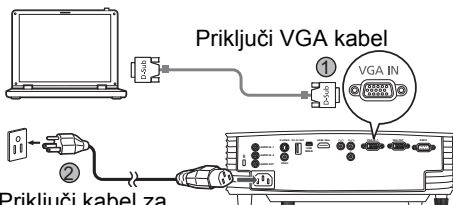


Éteindre le projecteur

Appuyez le bouton d'alimentation deux fois.

Brzi početak

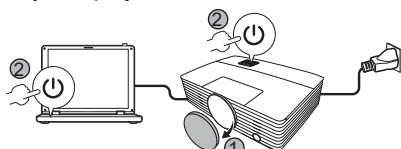
Povezivanje s računalom



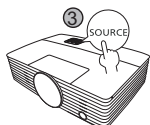
Priključi kabel za napajanje

Uključivanje projektor

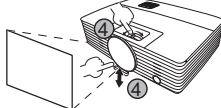
Uključite projektor i računalo



Skinite poklopac objektiv



Odaberite ulazni izvor



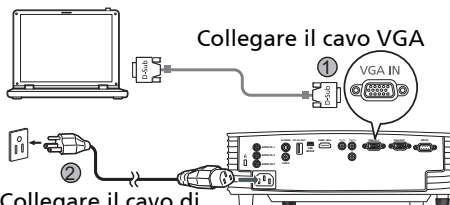
Ugodite fokus ili zum

Isključivanje projektor

Dva puta pritisnite gumb za uključivanje.

Guida rapida

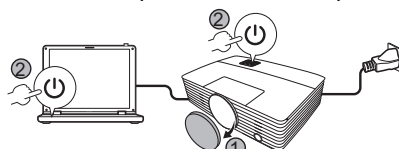
Collegamento a un computer



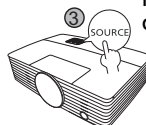
Collegare il cavo di alimentazione

Accensione del proiettore

Accendere il proiettore e il computer



Rimuovere il coperchio dell'obiettivo



Selezionare la sorgente in ingresso



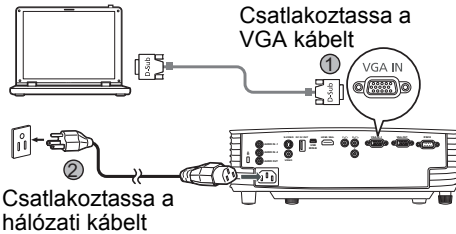
Regolare la messa a fuoco o lo zoom

Spegnimento del proiettore

Premere due volte il pulsante di accensione.

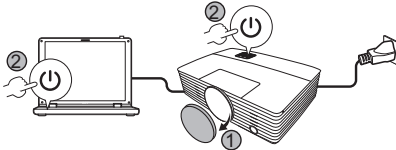
Gyors üzembe helyezés

Csatlakoztatás egy számítógéphez

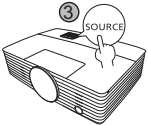


A projektor bekapcsolása

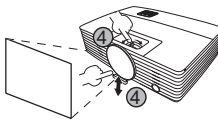
Kapcsolja be a projektort és a számítógépet



Vegye le a lencsevédő sapkát



Válassza ki a bemeneti forrást



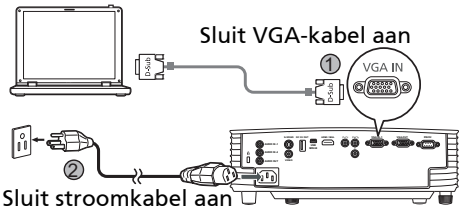
A fókusz vagy a zoom beállítása

A projektor kikapcsolása

Nyomja meg kétszer a bekapcsoló gombot.

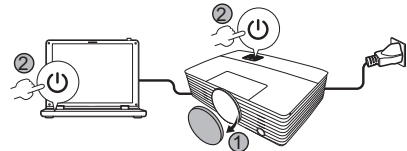
Snel starten

Verbinden met een computer

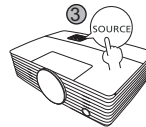


De projektor inschakelen

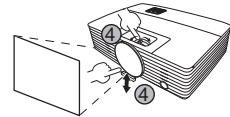
Schakel de projektor en de computer in



Verwijder de lenskap



Selecteer het ingangssignaal



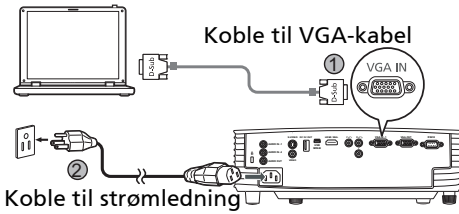
Pas focus of zoom aan

De projektor uitschakelen

Druk tweemaal op de aan/uitknop.

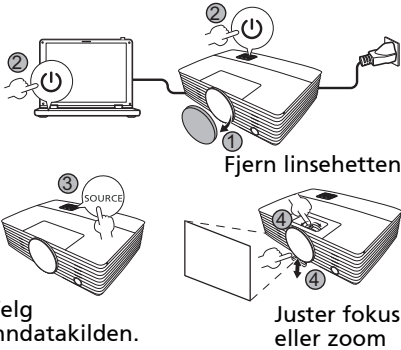
Hurtigstart

Koble til en datamaskin



Slå på projektoren

Slå på projektoren og datamaskinen

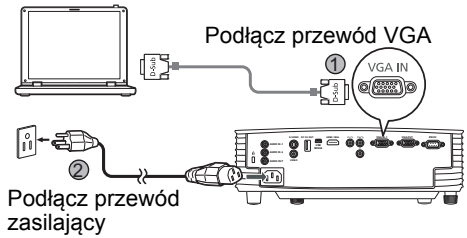


Slå av projektoren

Trykk to ganger på av/på-knappen.

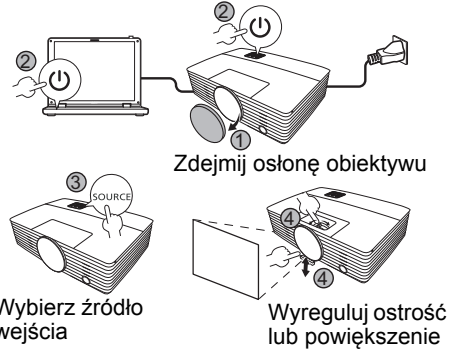
Szybki start

Podłączanie do komputera



Włączanie projektora

Włącz projektor i komputer

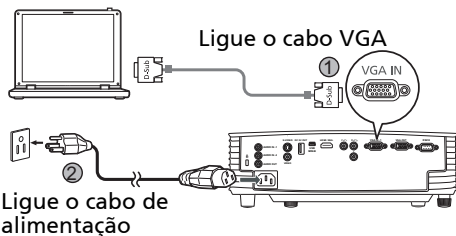


Wyłączanie projektora

Naciśnij dwukrotnie przycisk zasilania.

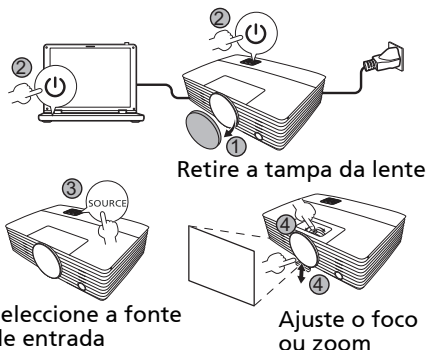
Guia Rápido

Conectar a um computador



Ligar o projector

Ligue o projector e o computador

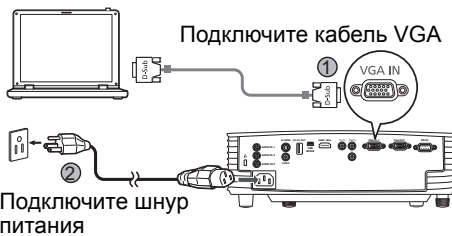


Desligar o projector

Prima duas vezes o botão de alimentação.

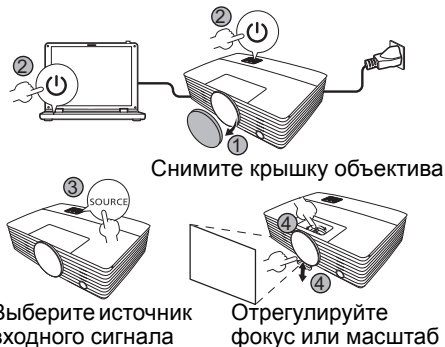
Быстрый запуск

Подключение к компьютеру



Включение проектора

Включите проектор и компьютер

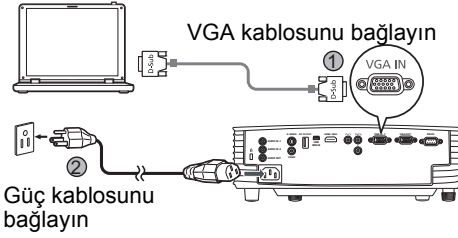


Выключение проектора

Дважды нажмите кнопку питания.

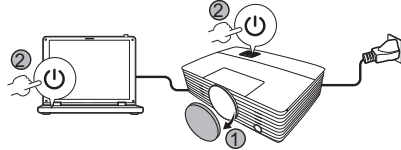
Hızlı Başlat

Bir bilgisayara bağlama

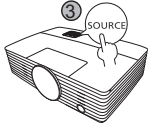


Projektöre Güç Verme

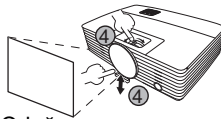
Projektörü ve bilgisayarı açın



Lens kapağını çıkarın



Giriş kaynağını seçin



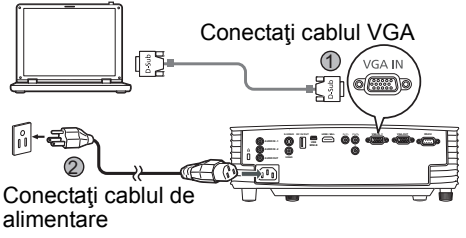
Odağı veya yakınlaştırmayı ayarlayın

Projektörü Kapatma

Güç düğmesine iki kez basın.

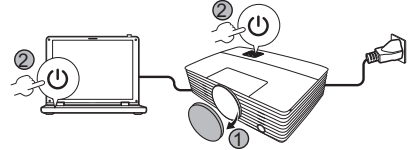
Pornire rapidă

Conectarea la un computer

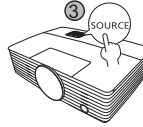


Pornirea proiectorului

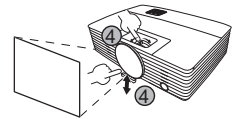
Porniți proiectorul și computerul



Demontați capacul lentilei



Selectați sursa de intrare



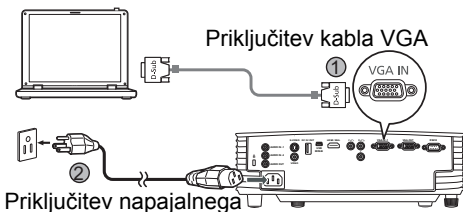
Reglați focalizarea sau zoom-ul

Oprirea proiectorului

Apăsați de două ori butonul Pornit/Oprit.

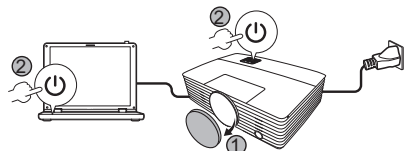
Hiter začetek

Povezovanje z računalnikom

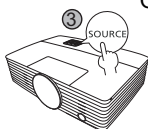


Vklop projektorja

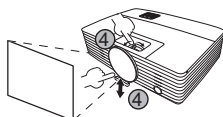
Vklop projektorja in računalnika



Odstranjevanje pokrova leče



Izbira vhodnega izvora



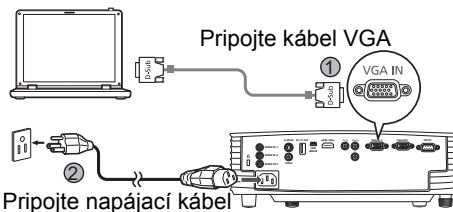
Prilagoditev fokusa ali povečave

Izklop projektorja

Dvakrat pritisnite gumb za vklop/izklop.

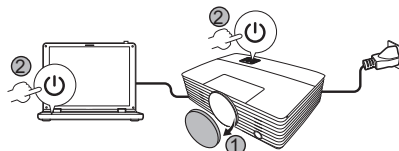
Rýchly štart

Pripojenie k počítaču

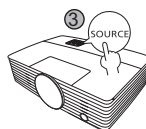


Zapnutie projektorja

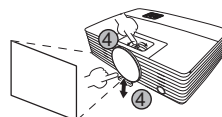
Zapnutie projektorja a počítača



Dajte dole veko objektívu



Vyberte zdroj vstupu



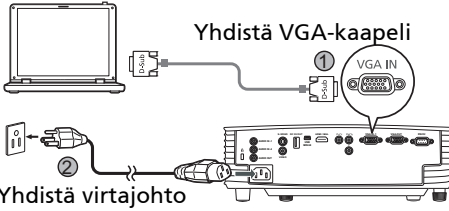
Nastavte zaostrenie alebo zväčšenie

Vypnutie projektorja

Stlačte dvakrát tlačidlo napájania.

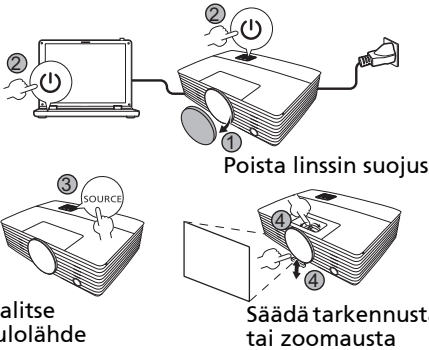
Pika-aloitus

Tietokoneeseen yhdistäminen



Projektorin virran kytkeminen päälle

Kytke projektori ja tietokone päälle



Valitse tulolähde

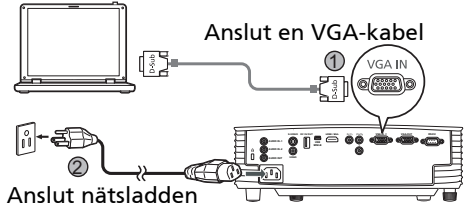
Säädä tarkennusta tai zoomausta

Projektorin virran kytkeminen pois päältä

Paina virtapainiketta kahdesti.

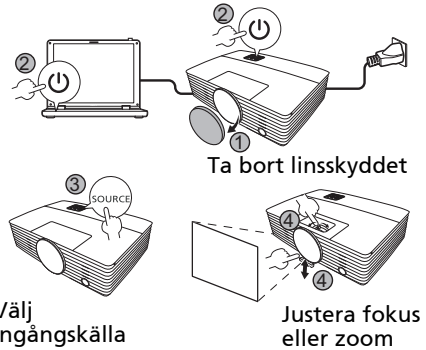
Snabbstart

Ansluta till en dator



Sätta på projektorn

Starta projektorn och datorn

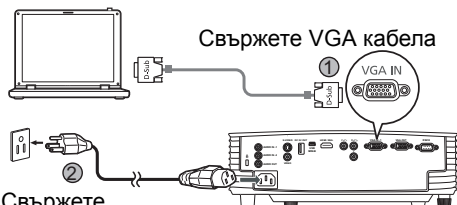


Stänga av projektorn

Tryck två gånger på av/på-knappen.

Бърз старт

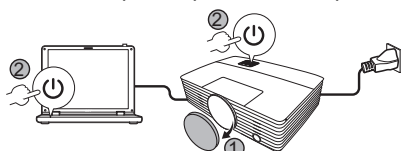
Свързване с компютър



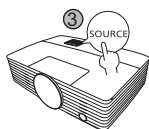
Свържете
захранващия кабел

Включване на проектора

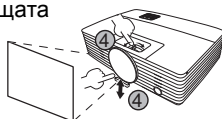
Включете проектора и компютъра



Махнете капачето на
лещата



Изберете източник
на входен сигнал



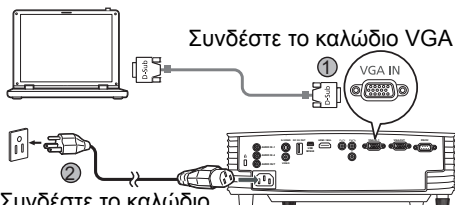
Регулиране на фокус
или мащабиране

Изключете проектора

Натиснете бутона за включване и изключване
два пъти.

Γρήγορη εκκίνηση

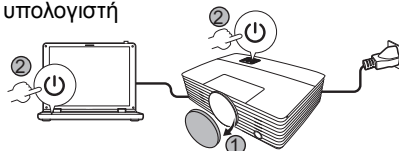
Σύνδεση σε υπολογιστή



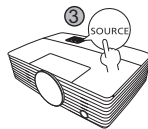
Συνδέστε το καλώδιο
ρεύματος

Ενεργοποίηση του προβολέα

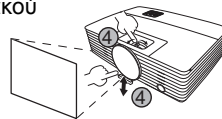
Ενεργοποιήστε τον προβολέα και τον
υπολογιστή



Αφαιρέστε το κάλυμμα του
φακού



Επιλογή την
πηγή εισόδου



Ρυθμίστε την
εστίαση ή το ζουμ

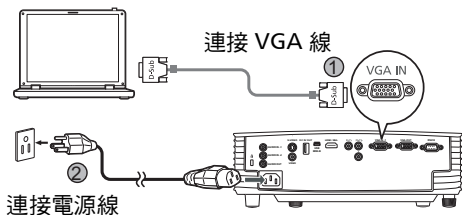
Απενεργοποίηση του προβολέα

Πίστετε το κουμπί τροφοδοσίας δύο φορές.

繁體中文

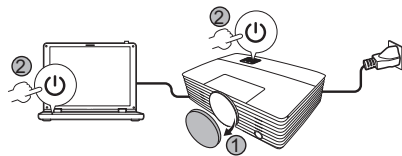
快速入門

連接到電腦

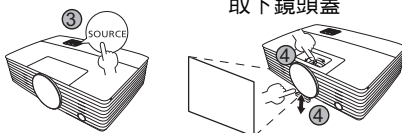


啟動投影機電源

開啟投影機和電腦



取下鏡頭蓋



選取輸入來源

調整焦距或縮放

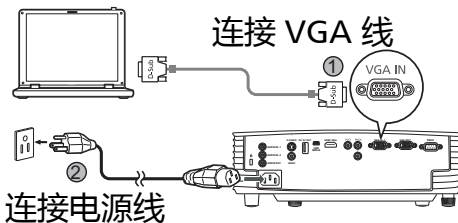
關閉投影機電源

按下電源按鈕兩次。

简体中文

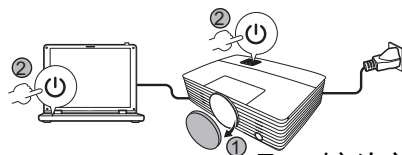
快速使用

連接到電腦

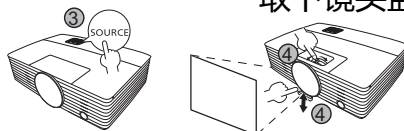


打開投影機

打開投影機和電腦



取下鏡頭蓋



選擇輸入信號源

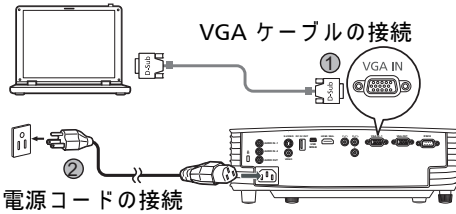
調整對焦或縮放

關閉投影機

按電源按鈕兩次。

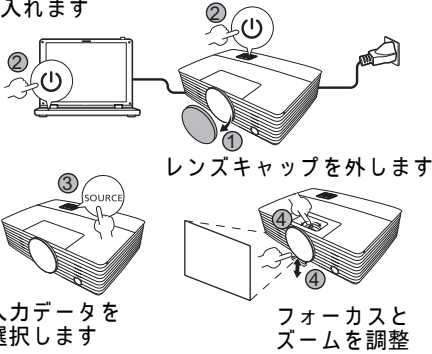
クイック スタート

コンピュータに接続する



プロジェクタの電源を入れる

プロジェクタとコンピュータの電源を入れます

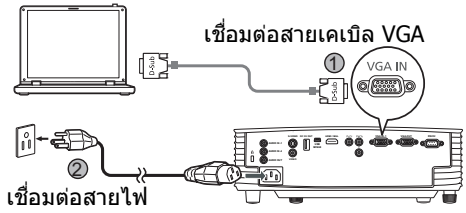


プロジェクタの電源を切る

電源ボタンを2回押します。

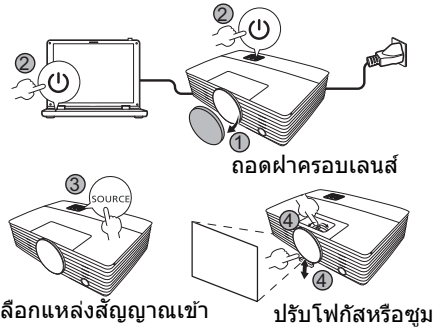
การเริ่มต้นใช้งานอย่างรวดเร็ว

การเชื่อมต่อเข้ากับคอมพิวเตอร์



การเปิดใช้เครื่องฉายภาพ

เปิดใช้เครื่องฉายภาพและคอมพิวเตอร์

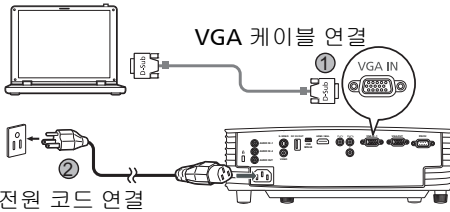


การปิดใช้เครื่องฉายภาพ

กดปุ่มเปิดปิดเครื่องสองครั้ง

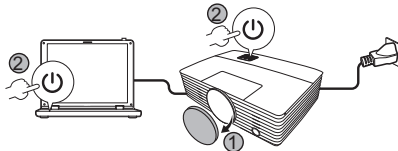
빠른 시작

컴퓨터에 연결



프로젝터 전원 켜기

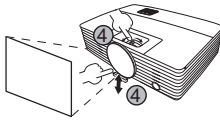
프로젝터와 컴퓨터 켜기



렌즈 덮개 제거



입력 소스 선택



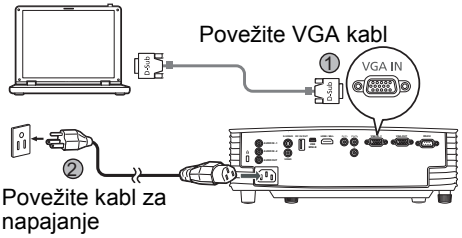
초점 또는 줌 조정

프로젝터 전원 끄기

전원 단추를 두 번 누릅니다.

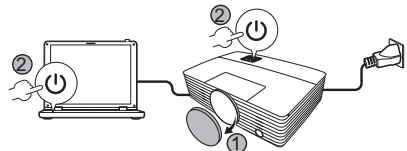
Brzi početak

Povezivanje sa računomom

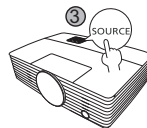


Uključivanje projektorra

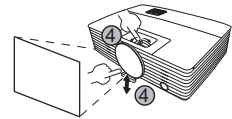
Uključite projektor i računomom



Uklonite poklopac sočiva



Izaberite ulazni izvor



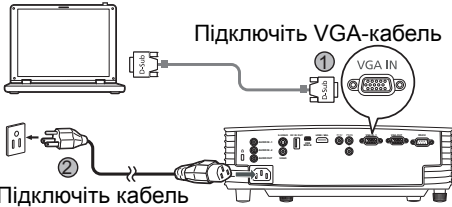
Podesite fokus ili zumiranje

Isključivanje projektorra

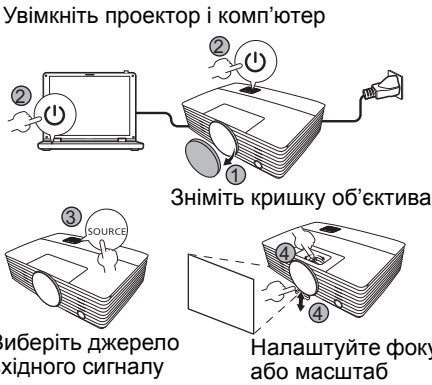
Pritisnite taster za uključivanje i isključivanje dva puta.

Короткий посібник

Підключення до комп'ютера



Увімкнення живлення проектора

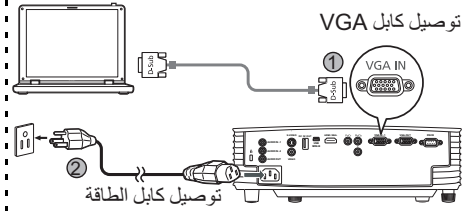


Вимкнення живлення проектора

Двічі натисніть кнопку живлення.

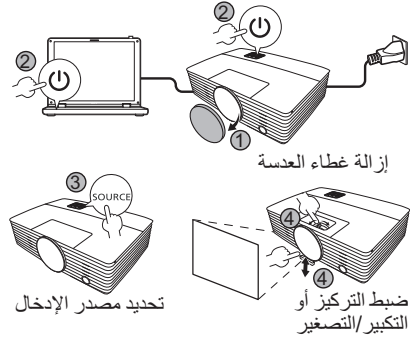
التشغيل السريع

الاتصال بجهاز كمبيوتر



تشغيل جهاز الإسقاط الضوئي

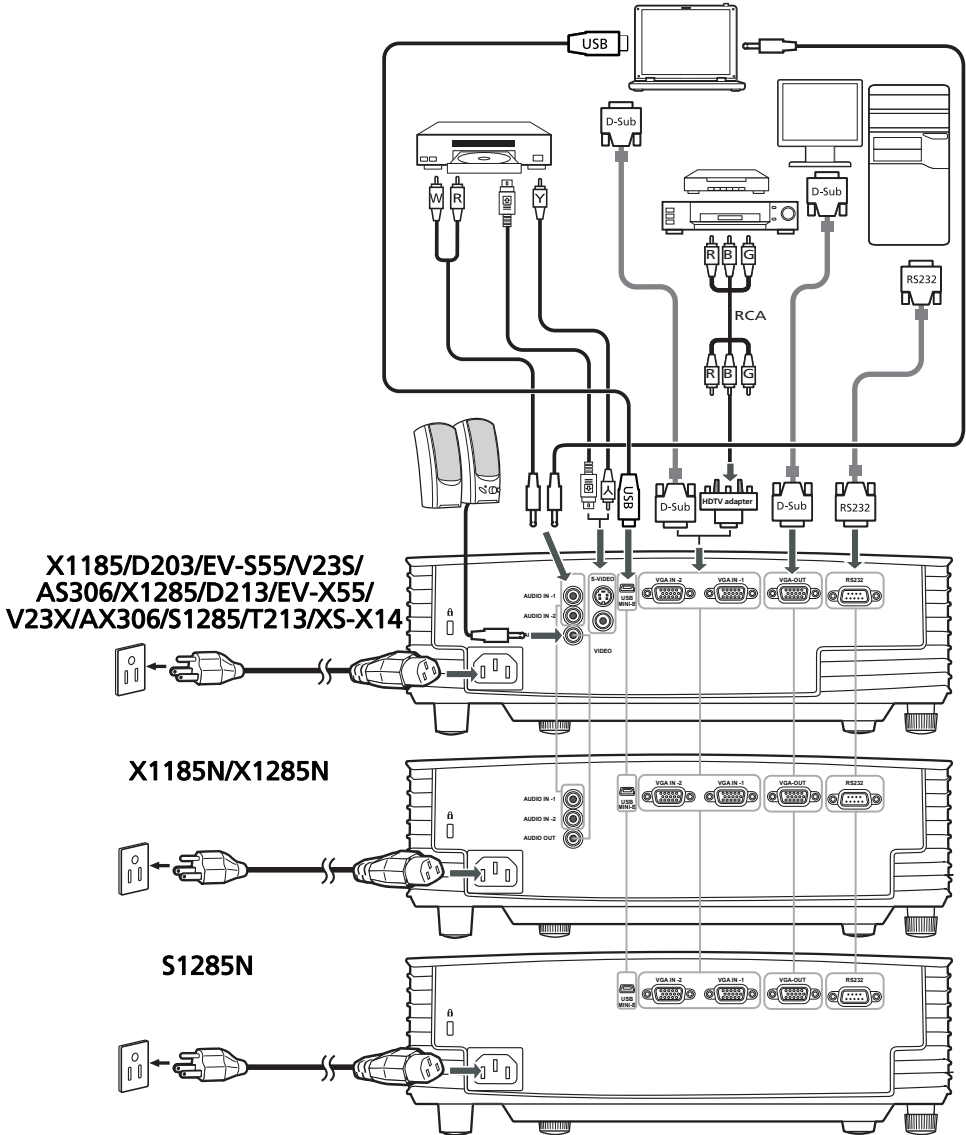
تشغيل جهاز الإسقاط الضوئي والكمبيوتر



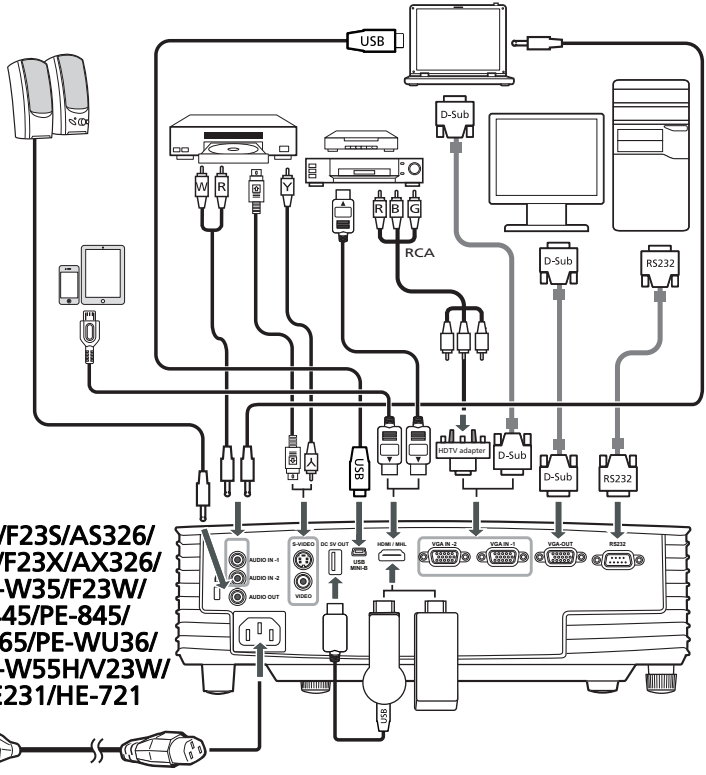
إيقاف تشغيل جهاز الإسقاط الضوئي

اضغط على زر الطاقة مرتين.

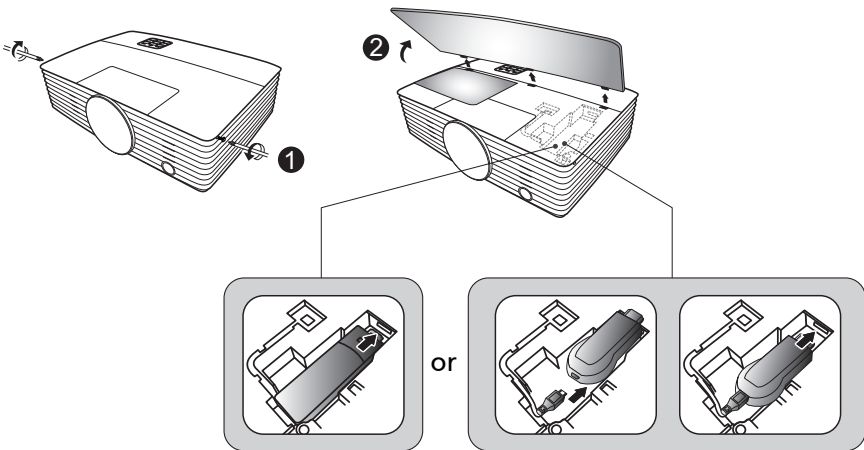
INSTALLATION



INSTALLATION

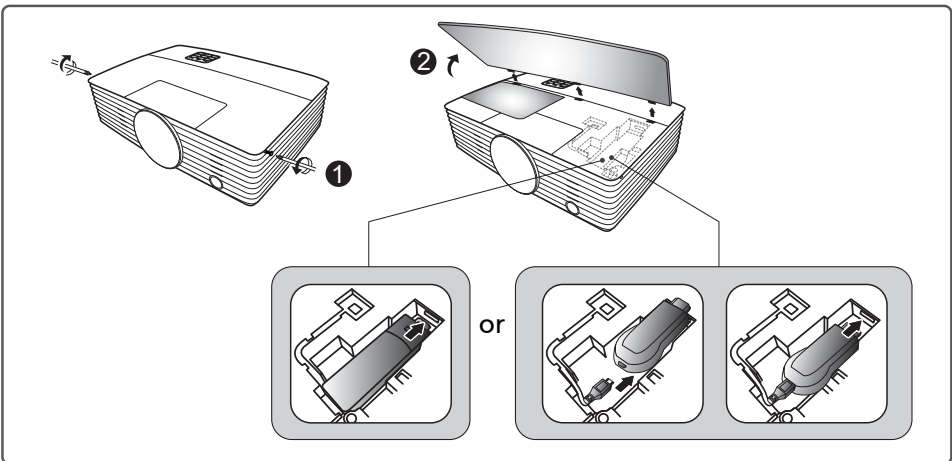
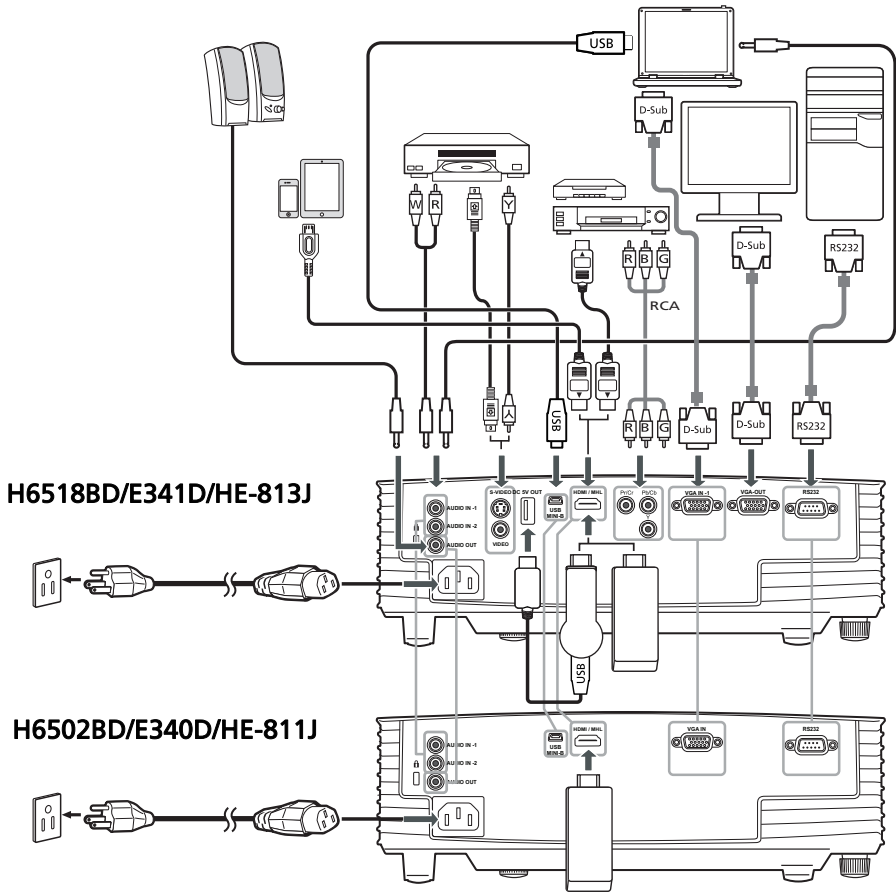


**P1285/M313/PE-X35/F23X/AX326/P1385W/M323P/PE-W35/F23W/AW327/P1525/M445/
 PE-845/H6525BD/P1623/M365/PE-WU36/H5381BD/E231/HE-721**



Note: Connector interface is subject to model's specifications

INSTALLATION



Note: Connector interface is subject to model's specifications