

TPM FW Capsule Update SOP




Outline

- 1. **Install .cat** for capsule update
- 2. Update driver
- 3. Check Update result

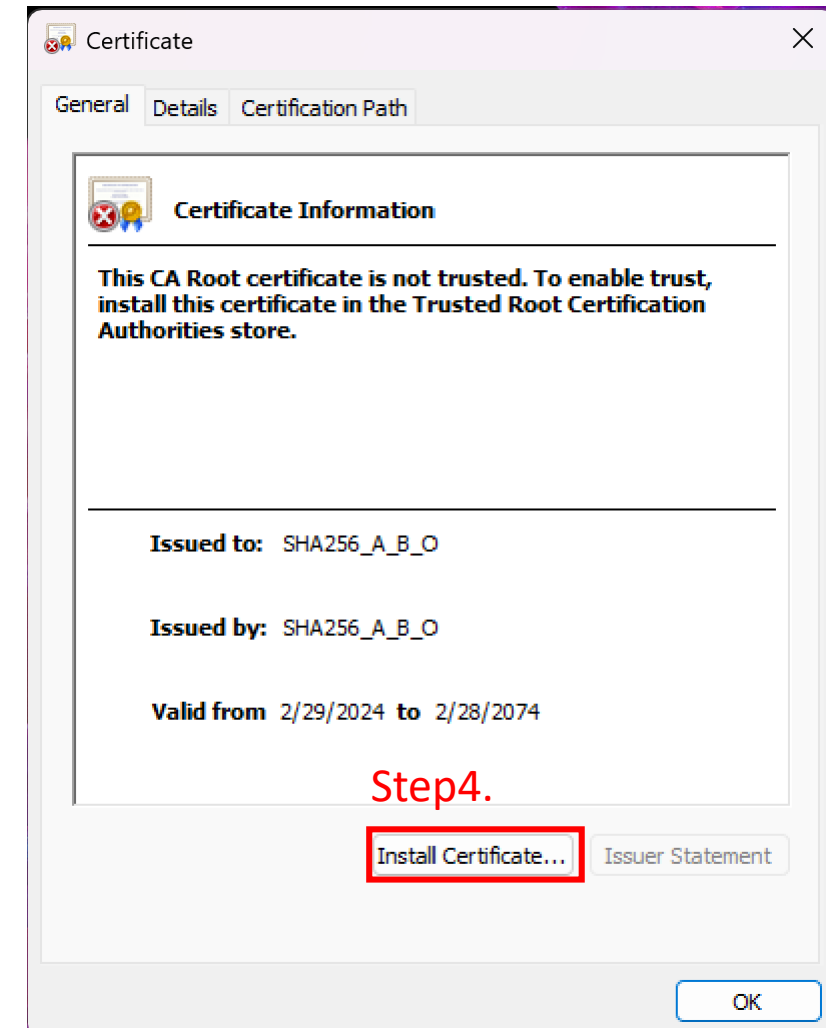
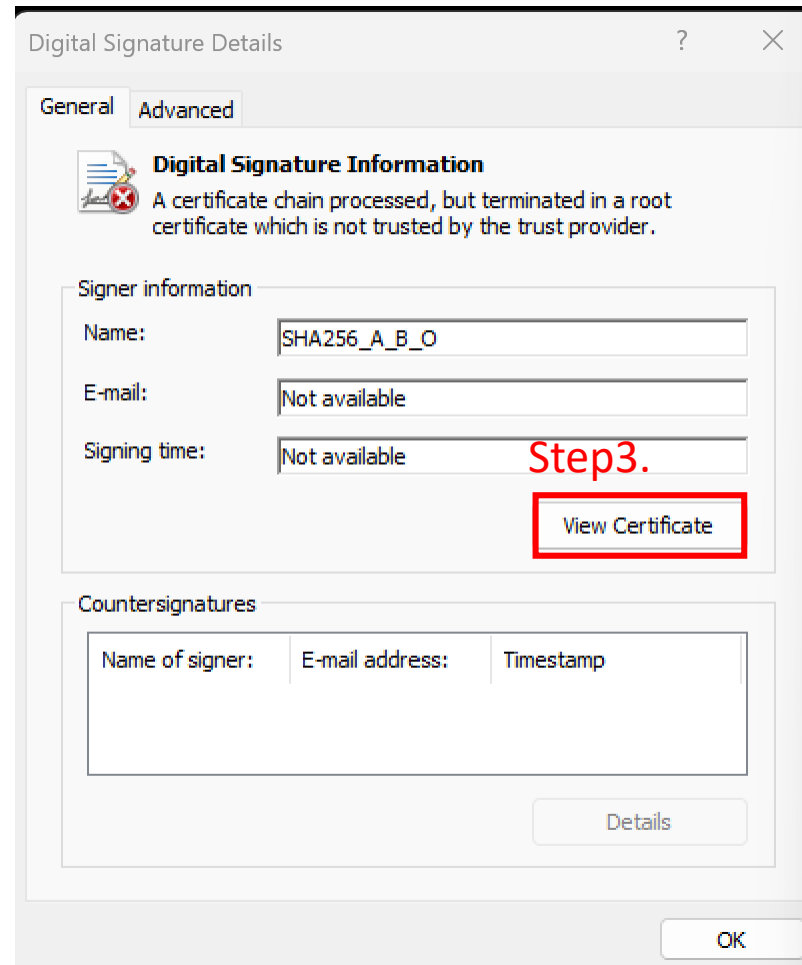
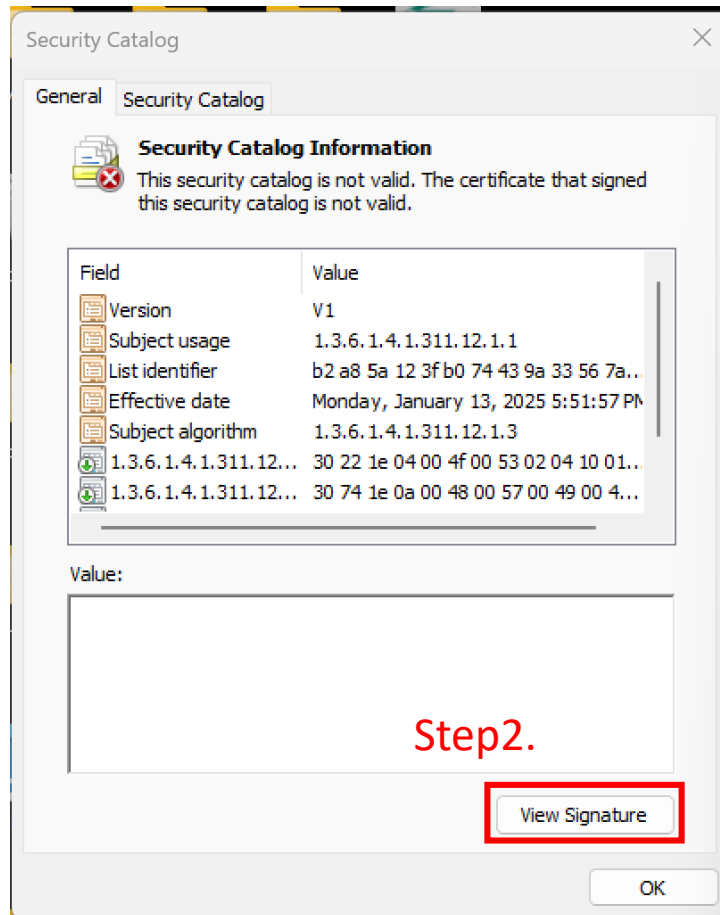
1. Install .cat for capsule update

Install .cat for capsule update-1

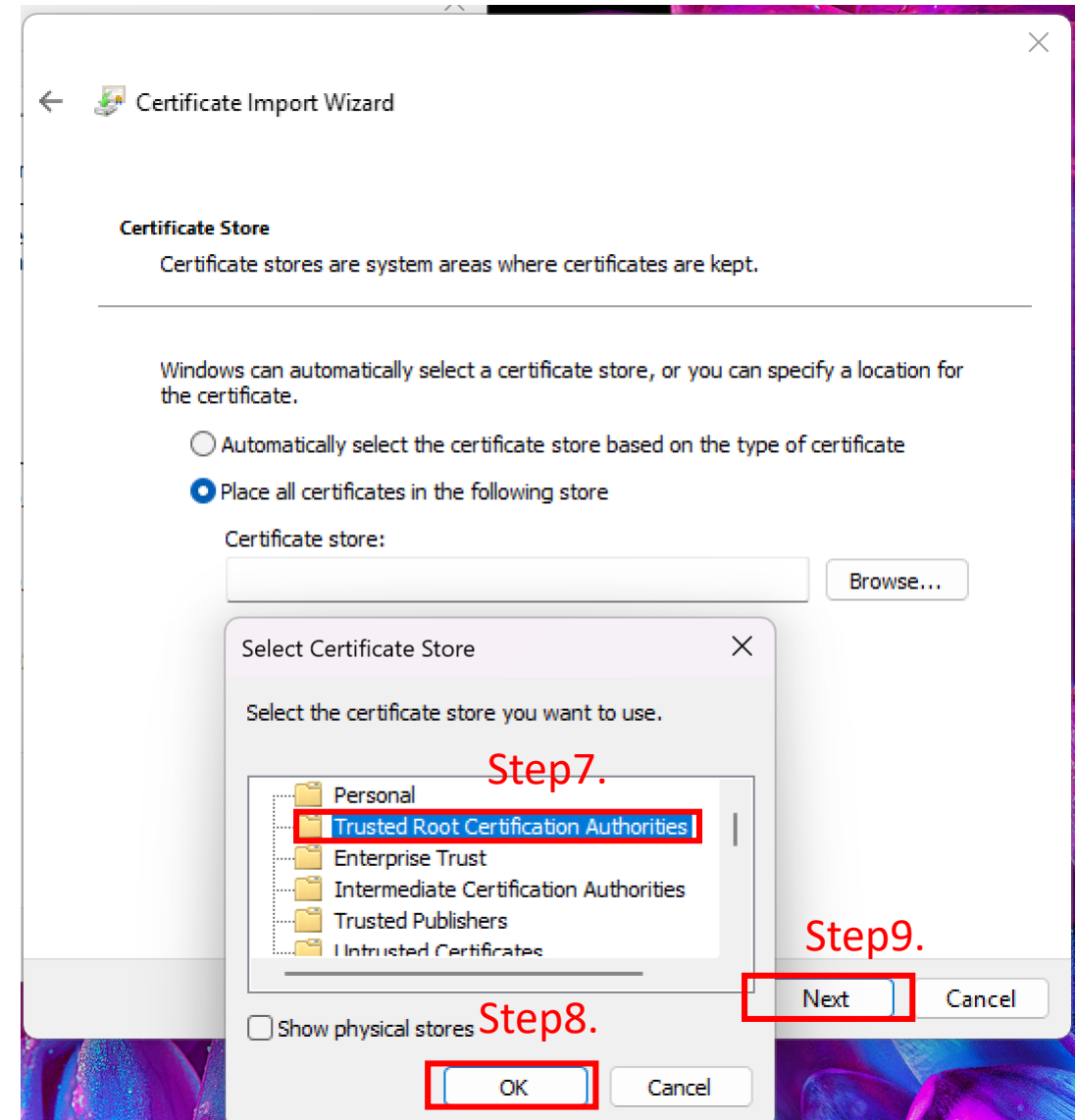
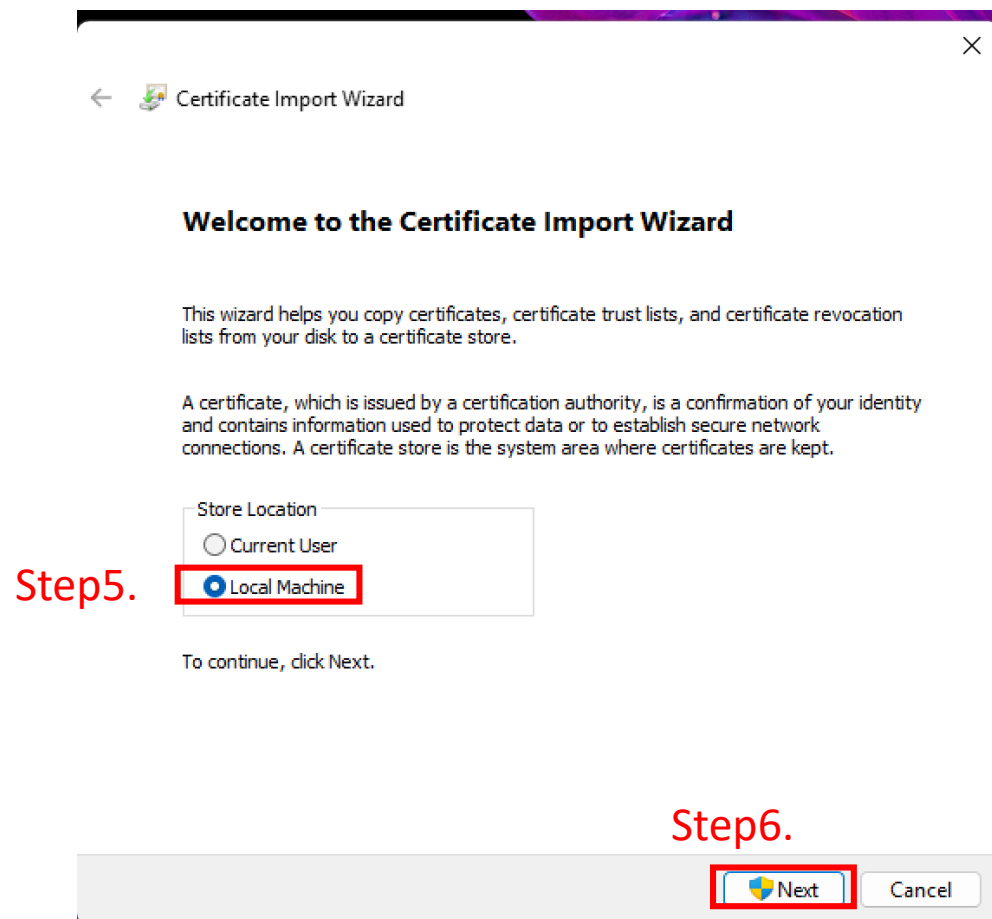
Step1. Click .cat

| | |
|--|-------------------|
|  FU_2.0_7.2.5.0_3.cap | 1/14/2025 9:51 AM |
|  NuvotonCapsuleDriver.inf | 1/13/2025 4:50 PM |
|  tpmupd.cat | 1/14/2025 9:51 AM |

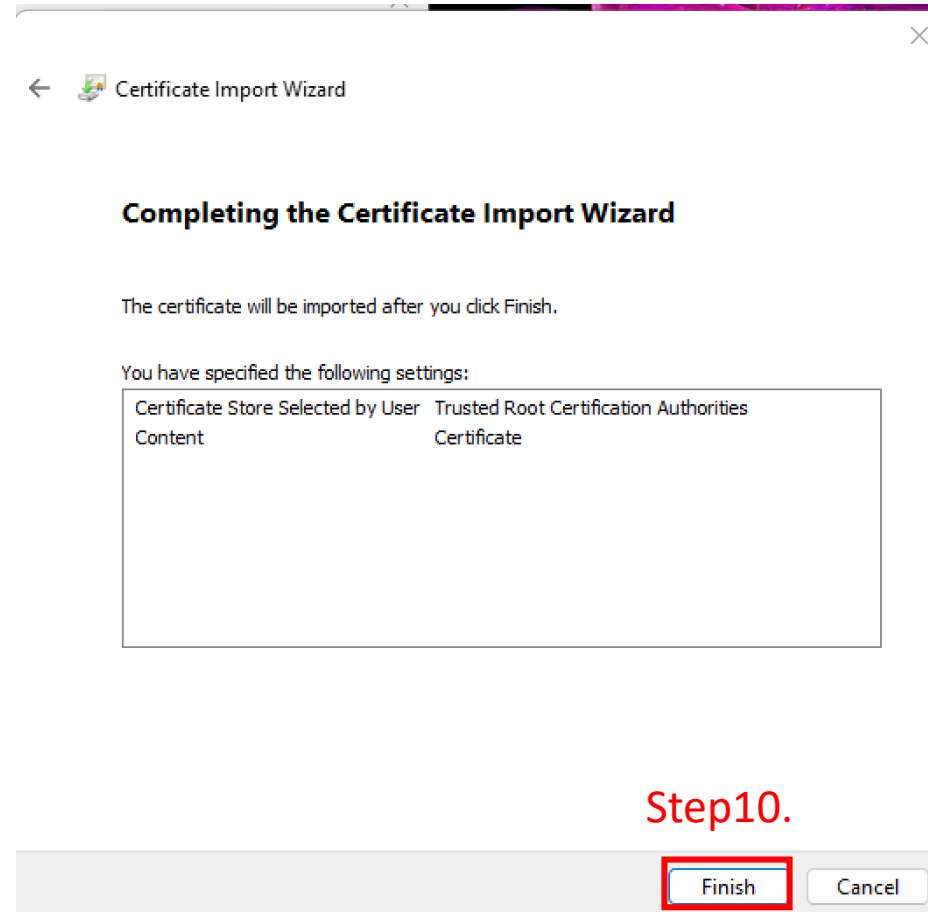
Install .cat for capsule update-2



Install .cat for capsule update-3



Install .cat for capsule update-4



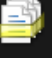


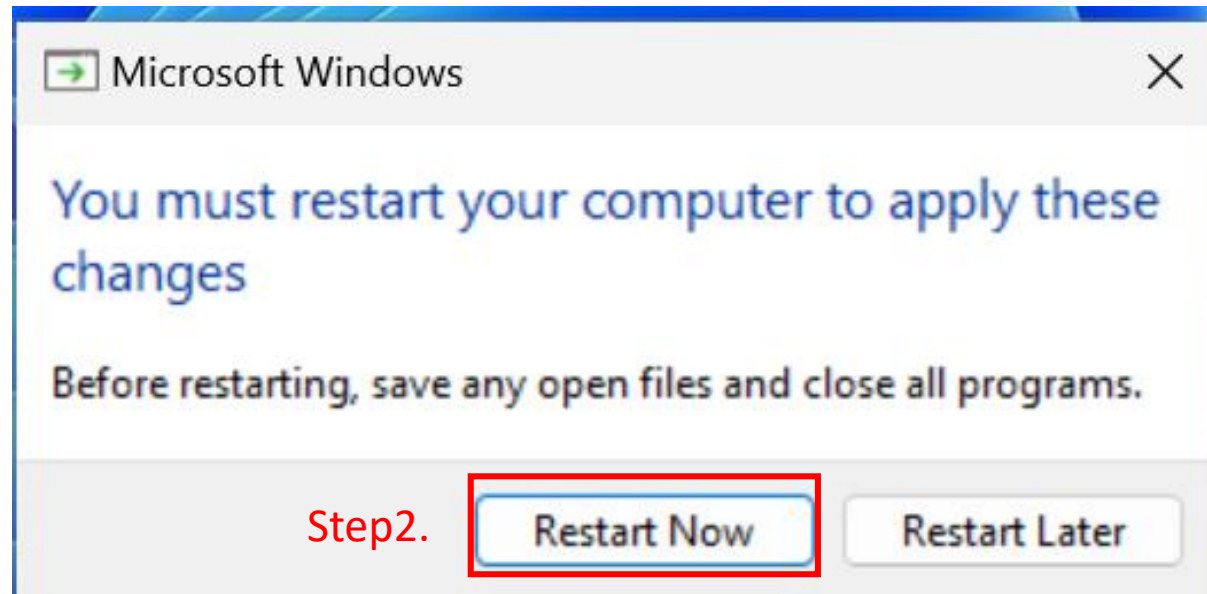
2. Update driver

Update driver-1

Step1.

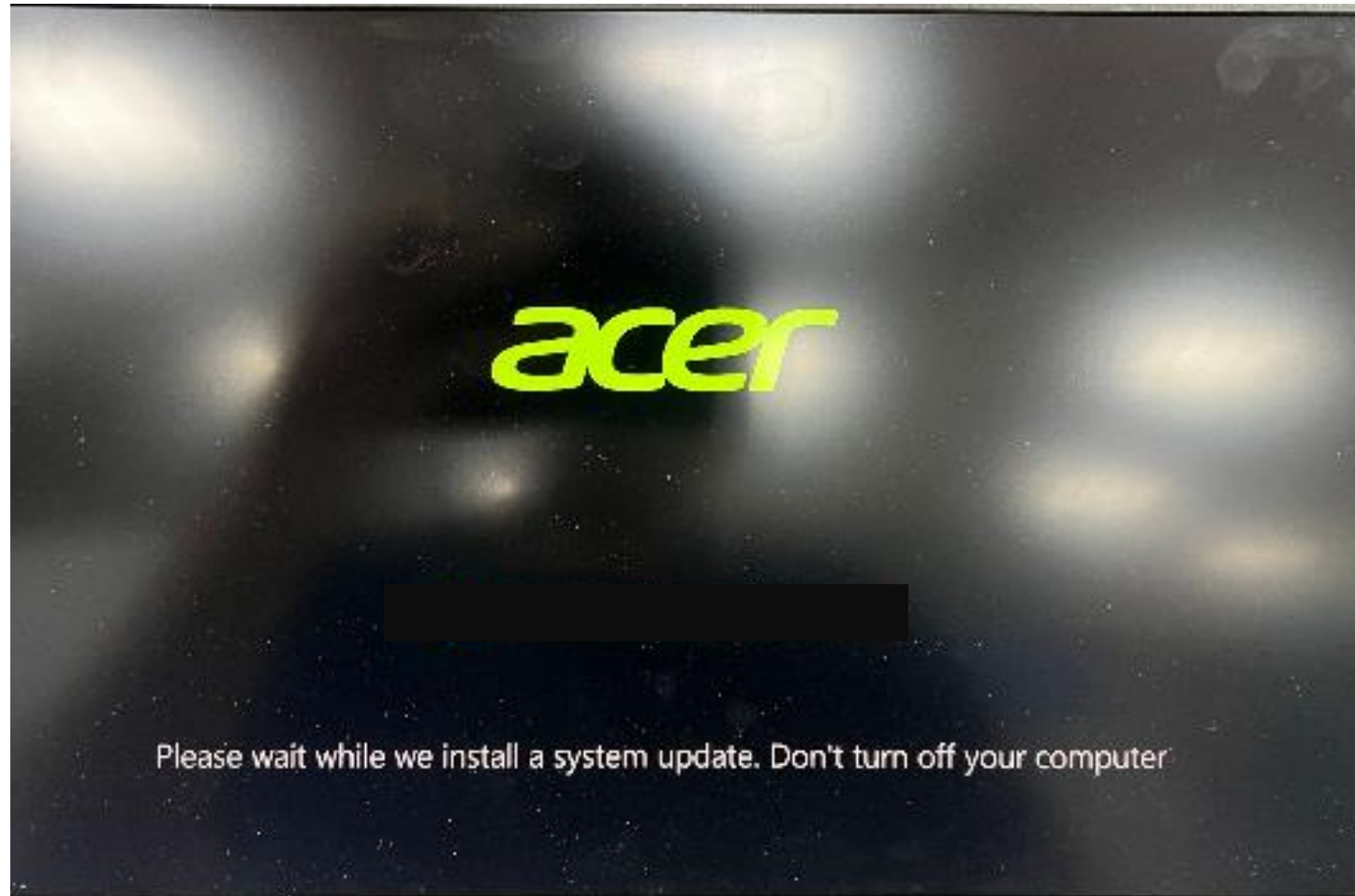
Right click to install

| | |
|--|-------------------|
|  FU_2.0_7.2.5.0_3.cap | 1/14/2025 9:51 AM |
|  NuvotonCapsuleDriver.inf | 1/13/2025 4:50 PM |
|  tpmupd.cat | 1/14/2025 9:51 AM |



Step2.

It will show below screen and restart automatically.



It will start updating TPM firmware.

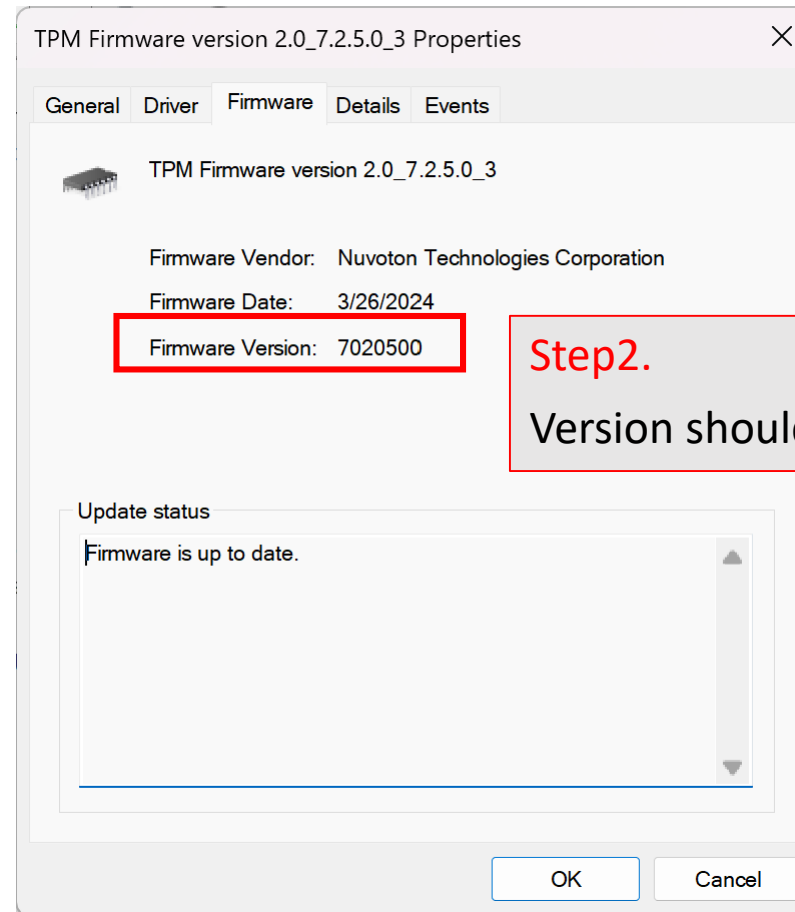
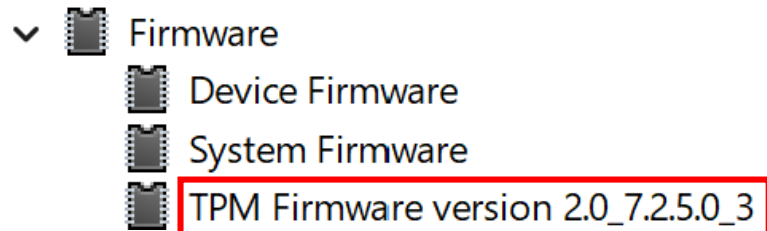


3.Check Update result

Check Update result-1

Step1.

Enter Device manager click this FW



Step2.

Version should be **7020500**