

# AMI UEFI BIOS Flash SOP for SHELL

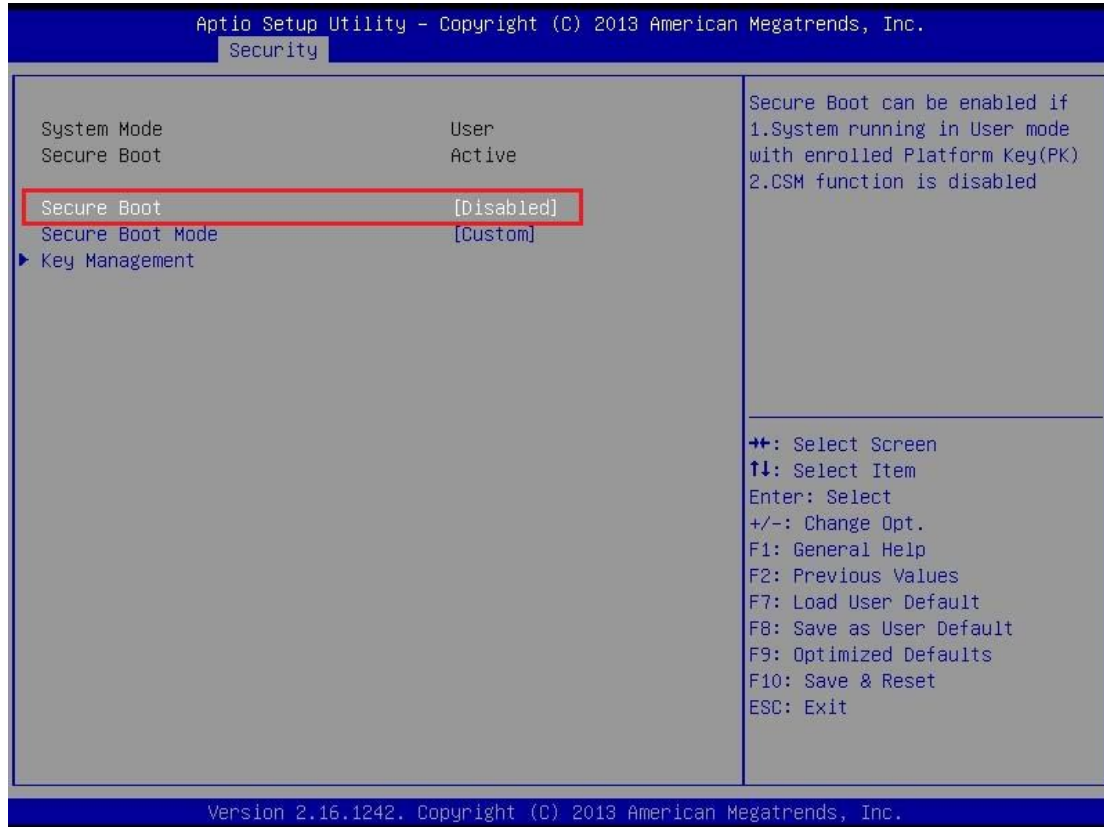
Document Revision: v1.0

Issue Date: 2014/06/18

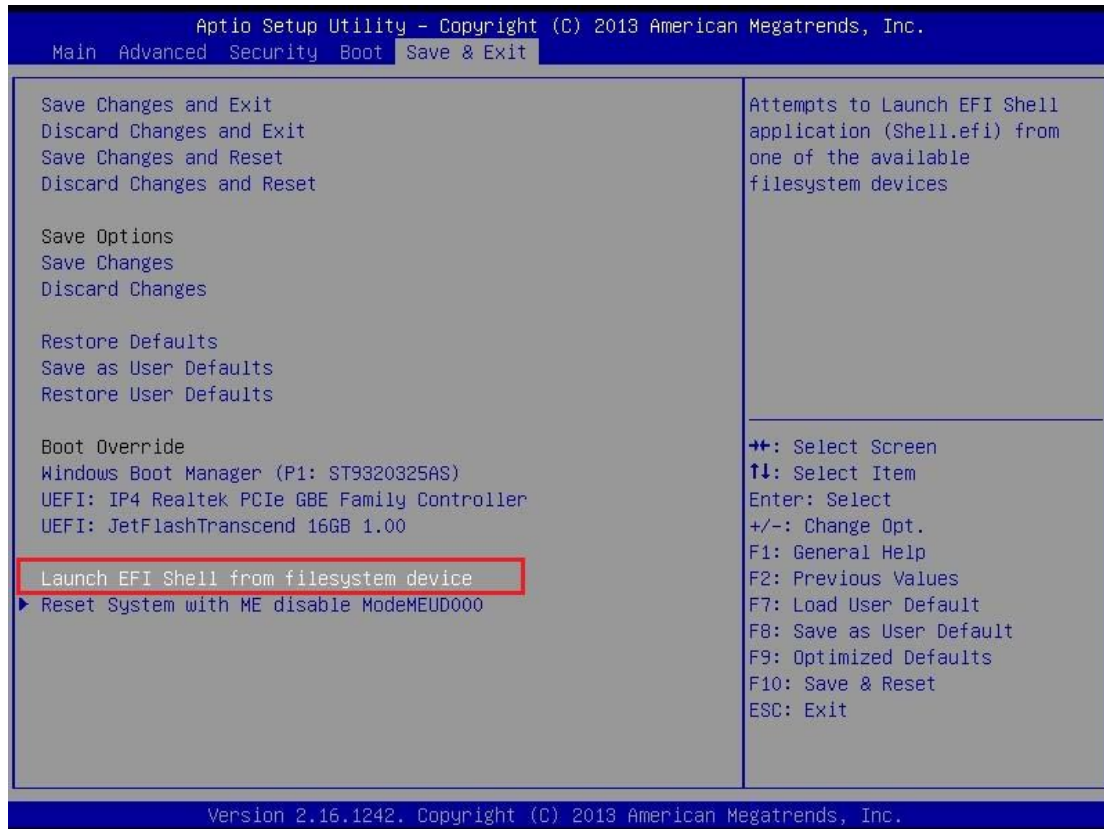
Author: Randy Pan

## Flash UEFI BIOS SOP for SHELL

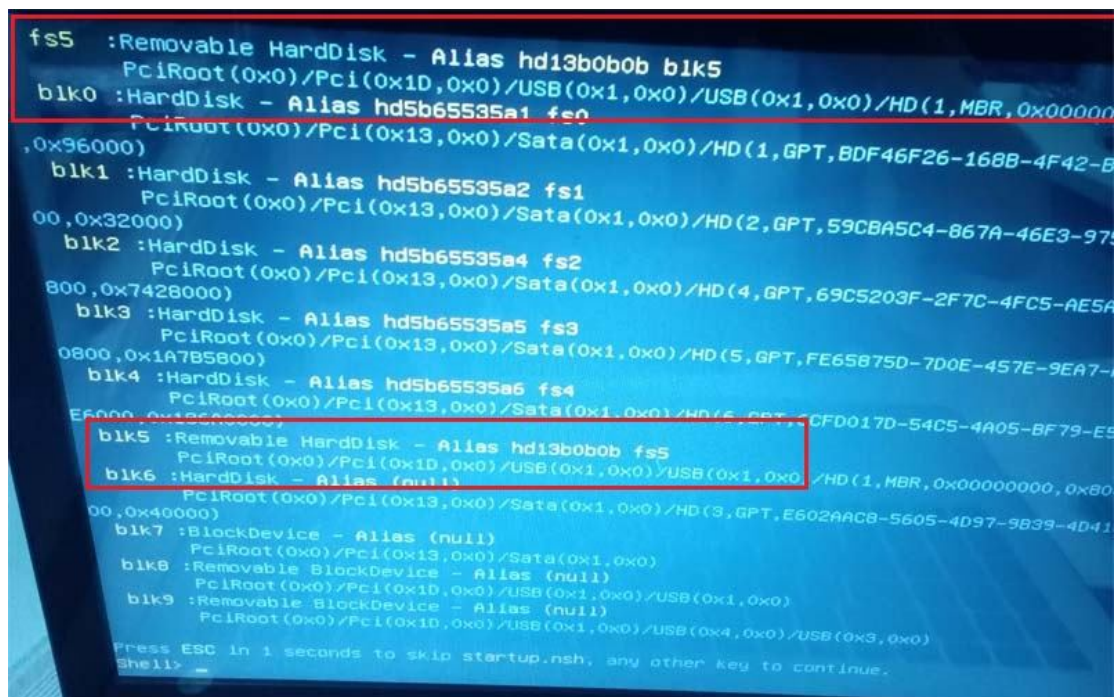
1. Copy all the files under Service folder to the root of a USB thumb drive
2. Insert USB thumb drive to target machine
3. Press **[DEL]** to boot to Setup Utility
4. In Security page, enter Secure Boot menu to Disable Secure Boot



5. Press **[F10]** to save and reset Setup then boot to Setup Utility again
6. In Save & Exit page, Select **[Launch EFI Shell from file system device]**



7. Find Alias name of USB thumb drive in SHELL mode, you could press Page Up if too many Alias, it is fs5 in this case



8. Input **fs5**: in SHELL mode, will enter USB thumb drive
9. Run **BIOS.NSH** will enter the directory where the tool locate and update bios.  
Update command: **AFUEFIX64.EFI BIOS\_FILE\_NAME /P /B /N /R**

```

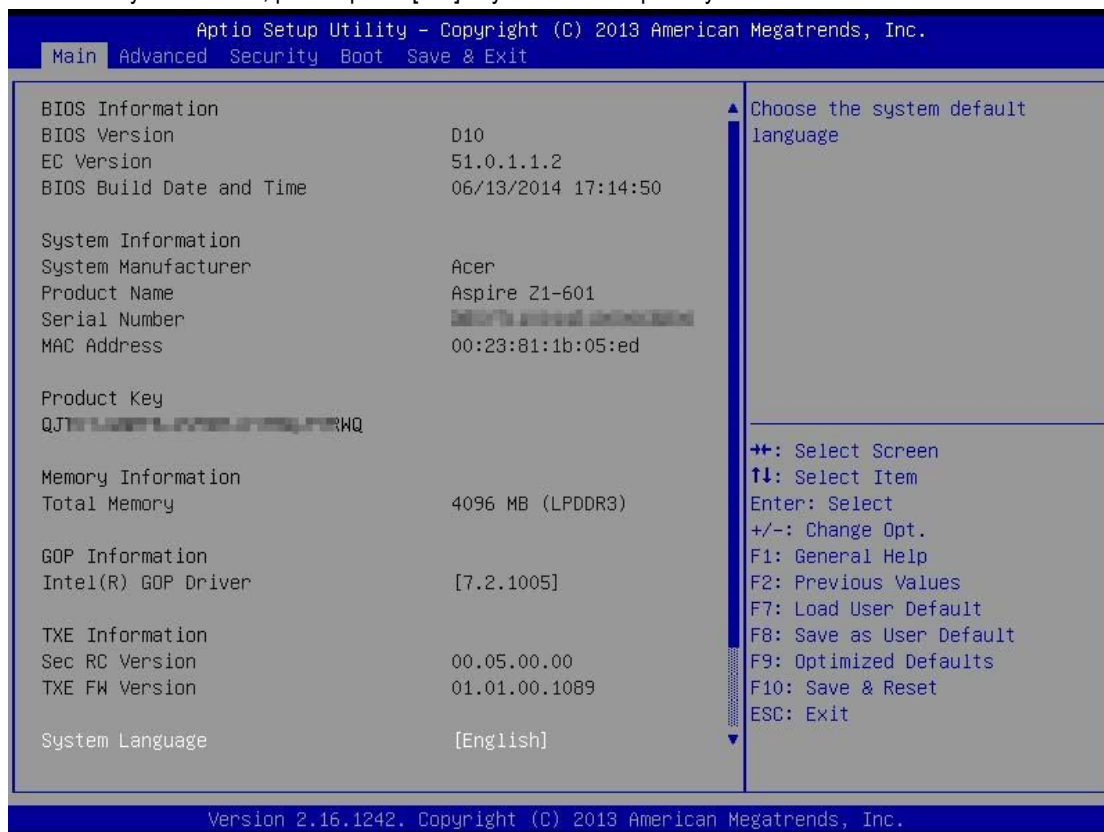
Shell> fs5:
fs5:\> BIOS.nsh
OFF
BIOS.nsh> CD BIOS
BIOS.nsh> CD SHELL
BIOS.nsh> afuefix64.efi ..\..\ROM\P11-A0.CAP /p /b /n /r

+-----+
|              AMI Firmware Update Utility  v3.05.02              |
|      Copyright (C)2013 American Megatrends Inc. All Rights Reserved.      |
+-----+

Reading flash ..... done
Secure Flash enabled, recalculate ROM size with signature...
- FFS checksums ..... ok
Loading capsule to secure memory buffer ... done
Erasing Boot Block ..... done
Updating Boot Block ..... done
Verifying Boot Block ..... done
Erasing Main Block ..... done
Updating Main Block ..... done
Verifying Main Block ..... done
Erasing NVRAM Block ..... done
Updating NVRAM Block ..... done
Verifying NVRAM Block ..... done

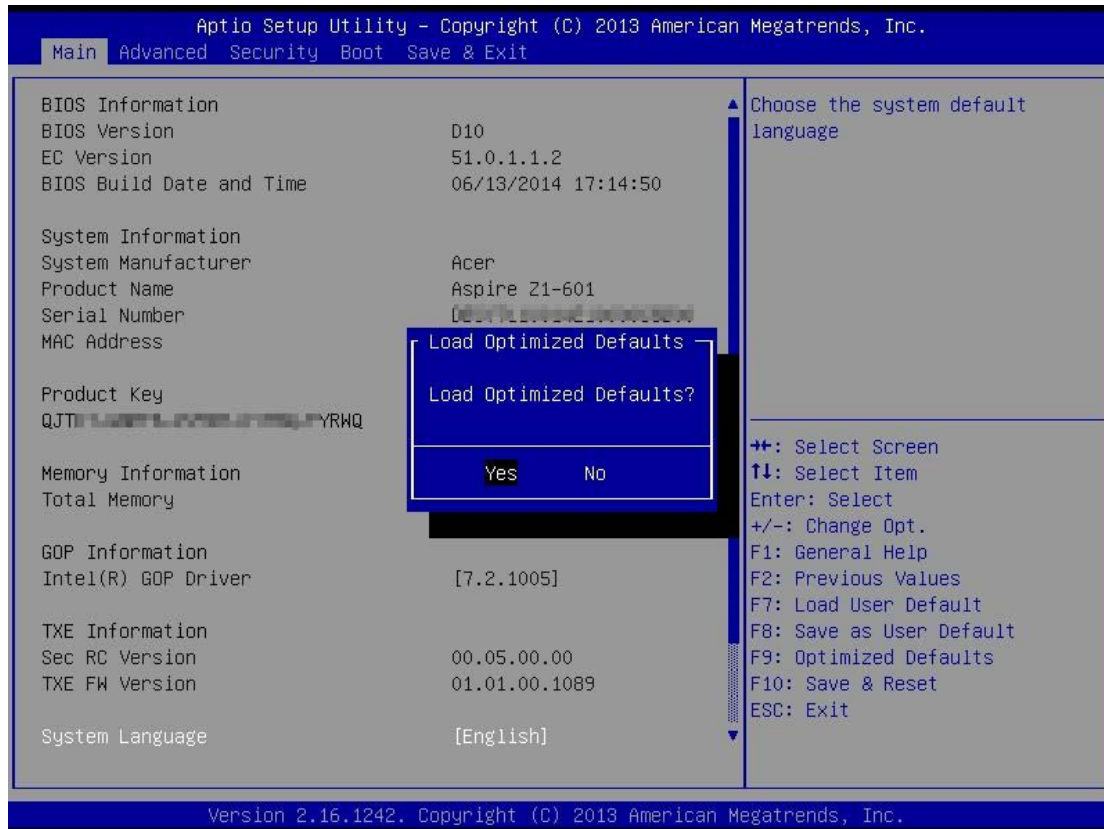
```

10. After finish flashing BIOS, please don't execute any programs and reboot the system directly.
11. When system reboot, please press **[Del]** key to enter Setup Utility.



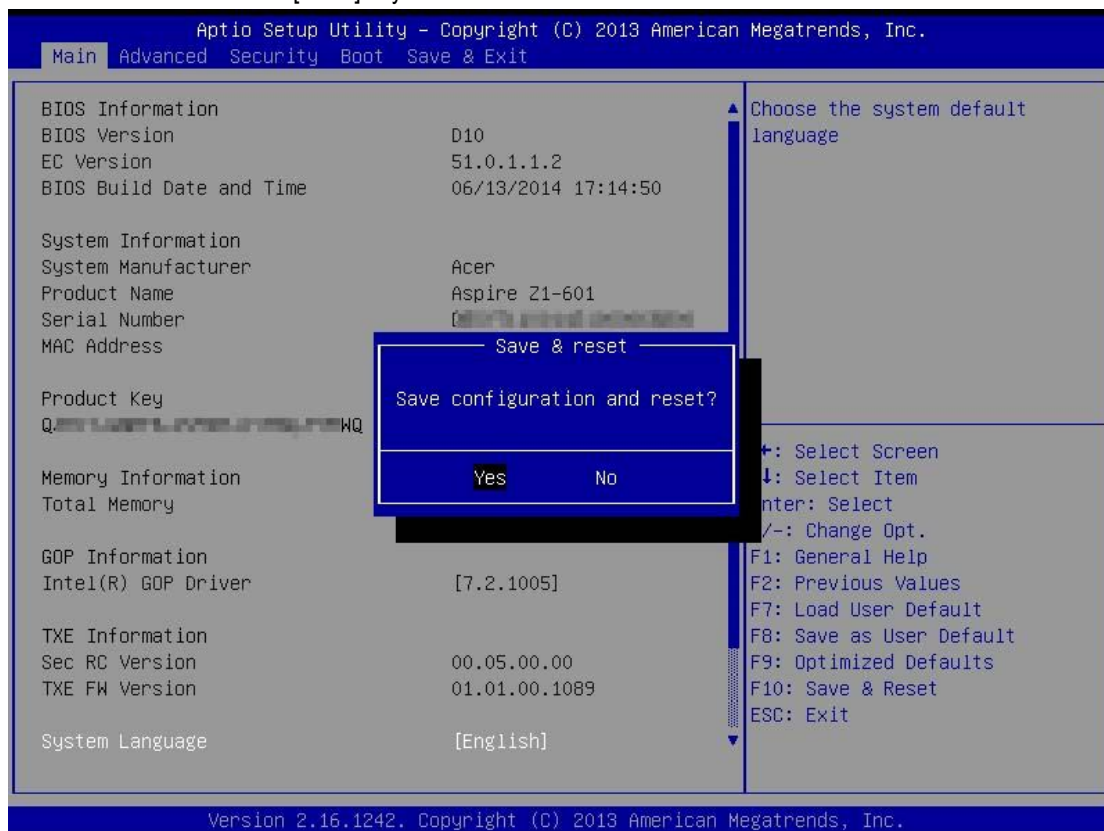
12. Press **[F9]** key to Load Optimized Default setting.
13. Select "Yes" and press **[Enter]** key.





14. Press **[F10]** to save configuration and reset.

15. Select "Yes" and Press **[Enter]** key.



16. Flash BIOS is finished.