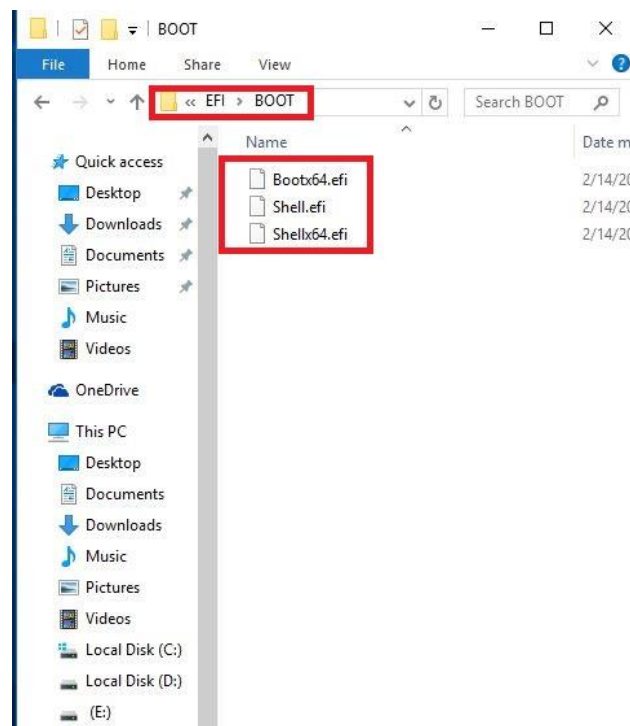


EFI Flash SOP

v1.5

1. Please put the EFI shell relating file to a USB thumbdrive and the file path need to be follow as below. (E:\EFI\BOOT, E: is an example. Please check the path of your USB thumbdrive) –This is for EFI bootable device.



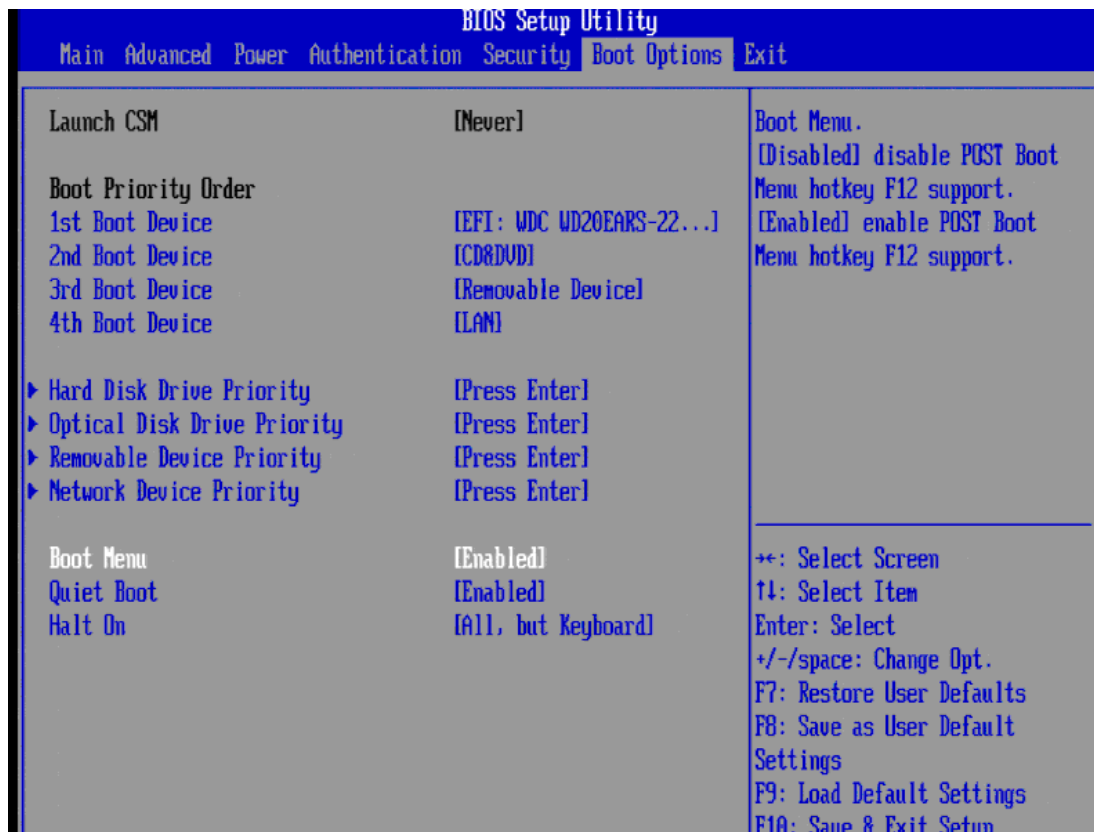
2. Power on the system. When you see the LOGO or hear one short beep, please press “Delete” to enter BIOS Setup Utility.
3. Choose “Authentication” page and select “Secure Boot” to disabled.



4. BIOS Setup Utility will disable “Secure Boot”

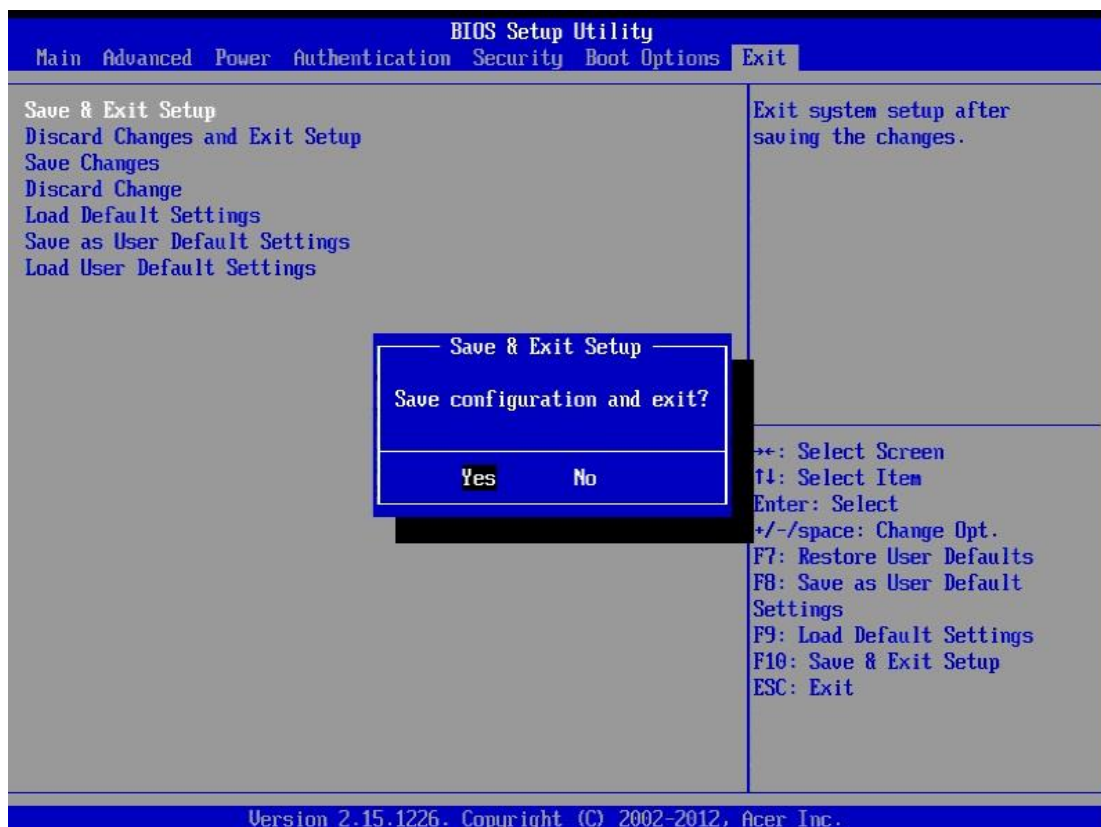


5. Choose “Boot Options” page and select “Boot Menu” to Enabled.



6. Choose “Exit” page and select “Save & Exit Setup” and press “Enter”.

7. Select “Yes” to restart.



8. Press hot key F12 to enter Boot Menu, and select EFI USB thumbdrive.
9. Under the EFI system, and choose the Removable BlockDevice group
(the Removable BlockDevice location is dynamic.)
E.g. In this figure, users should key in fs5: in Shell command line.

```
fs2 :HardDisk - Alias hd22e blk2
      Acpi (PNP0A03,0) /Pci (1F12) /?/HD (Part4,Sig346BC5B6-3025-4D0E-9603-68E5D2C25B3B)
fs3 :HardDisk - Alias hd22f blk3
      Acpi (PNP0A03,0) /Pci (1F12) /?/HD (Part5,Sig786109A0-E698-4366-AA0D-9D58FCCEC46D)
fs4 :HardDisk - Alias hd22g blk4
      Acpi (PNP0A03,0) /Pci (1F12) /?/HD (Part6,SigF1FABDB5-D18E-4D54-87BF-525E95B0608D)
fs5 :Removable HardDisk - Alias hd15b0d0b blk5
      Acpi (PNP0A03,0) /Pci (1D10) /Usb (1, 0) /Usb (3, 0) /HD (Part1,Sig0189F303)
blk0 :HardDisk - Alias hd22b fs0
      Acpi (PNP0A03,0) /Pci (1F12) /?/HD (Part1,Sig31FD0B73-A723-450C-B5AC-38CD1B95B4C2)
blk1 :HardDisk - Alias hd22c fs1
      Acpi (PNP0A03,0) /Pci (1F12) /?/HD (Part2,Sig5C776472-D735-4BF7-9D2E-955ADB103B02)
blk2 :HardDisk - Alias hd22e fs2
      Acpi (PNP0A03,0) /Pci (1F12) /?/HD (Part4,Sig346BC5B6-3025-4D0E-9603-68E5D2C25B3B)
blk3 :HardDisk - Alias hd22f fs3
      Acpi (PNP0A03,0) /Pci (1F12) /?/HD (Part5,Sig786109A0-E698-4366-AA0D-9D58FCCEC46D)
blk4 :HardDisk - Alias hd22g fs4
      Acpi (PNP0A03,0) /Pci (1F12) /?/HD (Part6,SigF1FABDB5-D18E-4D54-87BF-525E95B0608D)
blk5 :Removable HardDisk - Alias hd15b0d0b fs5
      Acpi (PNP0A03,0) /Pci (1D10) /Usb (1, 0) /Usb (3, 0) /HD (Part1,Sig0189F303)
blk6 :HardDisk - Alias (null)
      Acpi (PNP0A03,0) /Pci (1F12) /?/HD (Part3,SigC2D33479-D097-4DDF-91F5-00CAB15B5E5C)
blk7 :BlockDevice - Alias (null)
      Acpi (PNP0A03,0) /Pci (1F12) /?
blk8 :BlockDevice - Alias (null)
      Acpi (PNP0A03,0) /Pci (1F12) /?
blk9 :Removable BlockDevice - Alias (null)
      Acpi (PNP0A03,0) /Pci (1D10) /Usb (1, 0) /Usb (3, 0)

Press ESC in 4 seconds to skip startup.nsh, any other key to continue.
Shell> fs5:_
```

10. Enter “EFI” folder, and then enter “AFU” folder.

```
fs5:\P11-A0\EFI> dir
Directory of: fs5:\P11-A0\EFI

07/30/12 10:51a <DIR>      0 .
07/30/12 10:51a <DIR>      0 ..
07/29/12 04:19p <DIR>      0 AFU
0 File(s)          0 bytes
3 Dir(s)
```

```
fs5:\P11-A0\EFI>
```

11. Type flash.nsh, and use it to flash the ROMs.

```

fs5:\P11-A0\EFI\AFU> dir
Directory of: fs5:\P11-A0\EFI\AFU

07/30/12  10:51a <DIR>          0  .
07/30/12  10:51a <DIR>          0  ..
07/17/12  11:41a      r      334,448  AfuEfix64.efi
07/30/12  11:49a          46  flash.nsh
          2 File(s)      334,494 bytes
          2 Dir(s)

```

fs5:\P11-A0\EFI\AFU> flash.nsh

12. After step 10, we will see the following actions.

```

fs5:\P11-A0\EFI\AFU> flash.nsh
flash.x64.nsh> AfuEfix64.efi ..\..\Rom\P11-A0.CAP /P /B /M /R
-----+-----
|              AMI Firmware Update Utility  v3.02.00              |
|  Copyright (C)2012 American Megatrends Inc. All Rights Reserved.  |
|-----+-----|
Reading flash ..... done
Secure Flash enabled, recalculate ROM size with signature...
- FFS checksums ..... ok
Loading capsule to secure memory buffer ... done
Erasing Boot Block ..... done
Updating Boot Block ..... done
Verifying Boot Block ..... done
Erasing Main Block ..... done
Updating Main Block ..... done
Verifying Main Block ..... done
Erasing NVRAM Block ..... done
Updating NVRAM Block ..... done
Verifying NVRAM Block ..... done

fs5:\P11-A0\EFI\AFU> _

```

```

Intel (R) Firmware Update Utility Version: 11.6.13.1212
Copyright (C) 2007 - 2016, Intel Corporation. All rights reserved.

Communication Mode: MEI
Checking firmware parameters...

Warning: Do not exit the process or power off the machine before the firmware update process ends.
Sending the update image to FW for verification: [ COMPLETE ]

FW Update: [ 100% (-)]Do not Interrupt
FW Update is complete and a reboot will run the new FW.

```

13. Press the power button to shut down the system.

14. Boot system. When you hear two short beeps, please press “Delete” to enter BIOS Setup Menu.

15. Select “Load Default Setting” and press “Enter”. Select “Yes” to load default settings.



16. Select "Save & Exit Setup" and press "Enter".

17. Select "Yes" to restart.

