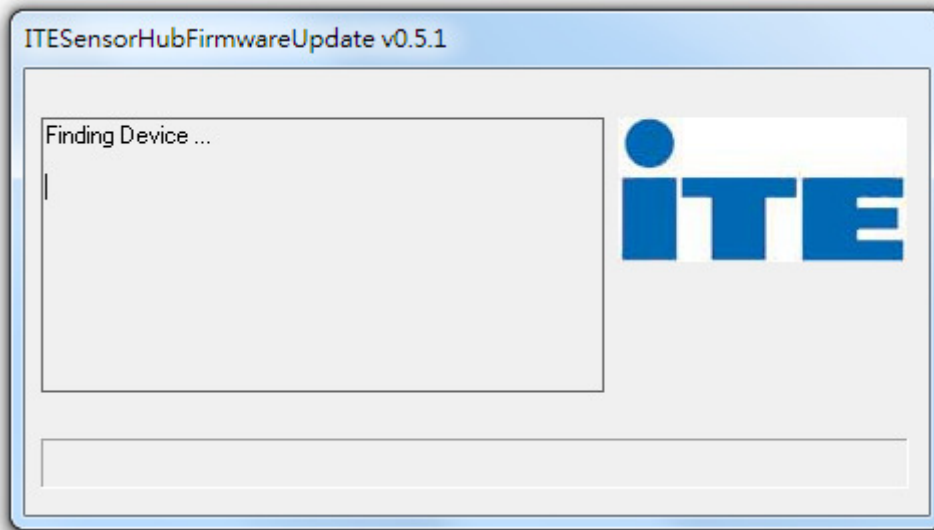


## ITE Sensor Fusion/Hub firmware update utility guide – ver 0.1

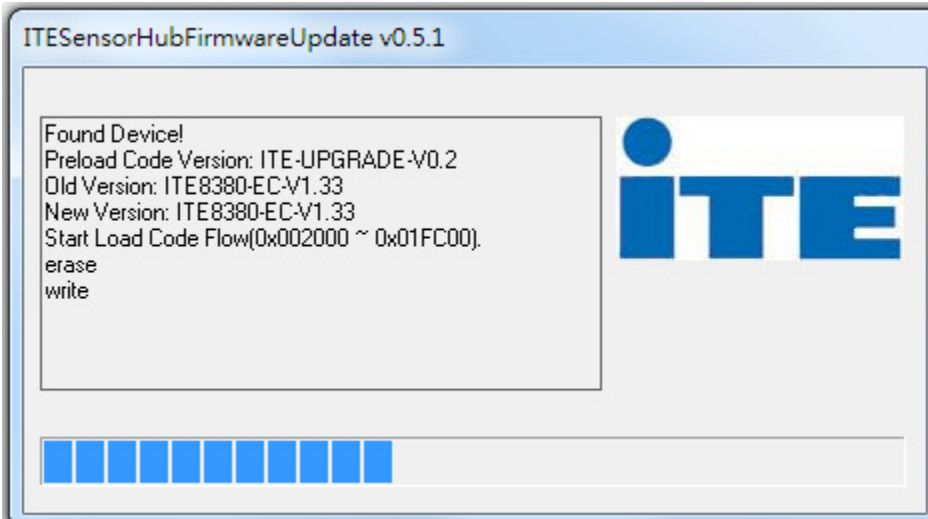
1. Execute the ITESensorHubFirmwareUpdate.exe (The target file is unique and its extension must be “.bin”.)

名稱	修改日期	類型	大小
BootCode	2013/8/5 上午 10...	檔案資料夾	
MainCode	2013/8/5 下午 04...	檔案資料夾	
it8350_beta1_r5579_Yoga.bin	2013/8/2 下午 02...	BIN 檔案	127 KB
ITESensorHubFirmwareUpdate.exe	2013/7/31 上午 1...	應用程式	767 KB

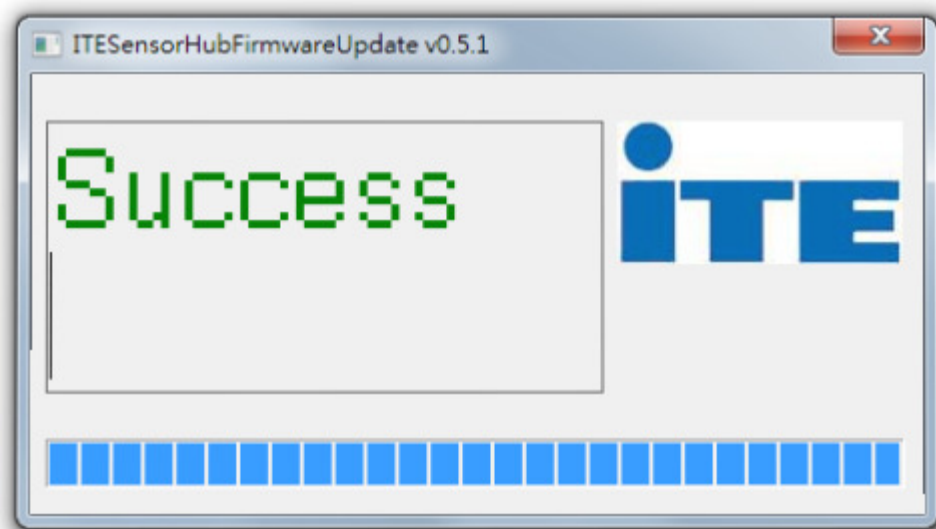
2. The device auto-scanning will be performed.



3. The firmware update will be automatically started after the device is detected.



4. The update is done after we see the Success message, then it will be closed automatically.



5. If there's any error message, please shutdown and try again.

