

# **TCMOSDriver Setup Package User Manual**

**Version1.8**

**Nationz Technologies Inc.**

**March 4, 2013**

## 1. CONTENTS

1. CONTENTS.....	2
2. REVISION HISTORY.....	3
3. RUNNING REQUIREMENT.....	3
Hardware Requirement.....	3
Compatible Platform.....	3
Software Requirements.....	4
Special Notice .....	4
4. Driver Install OPERATION WIZARD .....	4
Attended Setup .....	4
Install.....	4
Remove .....	5
Unattended setup .....	6
Silent Install.....	6
5. Check installed driver version .....	6

## 2. REVISION HISTORY

Document Number	Revision Number	Description	Revision Date
1	1.0	Initial release	2010-01-21
2	1.1	TCM OS Driver Version2.2 for Windows server 2008 R2	2010-05-04
3	1.2	TCM OS Driver Version 2.3.0.1 For Windows XP/Vista/Server03/Server08/Win7 32bit and 64bit,Windows 2008 R2	2012-4-24
4	1.3	Without TCM Chip,Driver can't install success and TSM can't install success	2012-5-25
5	1.4	Driver Setup Packet Update to V2.3.0.3 for Dealing with Device Management has two TCM Device	2012-5-29
6	1.5	Driver Setup Packet Update to V2.3.0.4:On Some OS ,it can't Clear Packet Files fully When Uninstall on Previous Version.	2010-5-30
7	1.6	Support Windows 8	2012-9-25
8	1.7	Support Windows Server 2012	2012-10-16
9	1.8	Repair the problem on the Windows 8 and Windows Server 2012	

## 3. RUNNING REQUIREMENT

### Hardware Requirement

1. Make sure that NATIONZ Trusted Cryptography Module chip has plugged in your motherboard
2. Please declare Nationz TCM PnPID(ZIC0101) in BIOS

### Compatible Platform

- Windows XP 32/64 bits
- Windows Vista 32/64 bits
- Windows 7 32/64 bits
- Windows Server 2003 32/64 bits
- Windows Server 2008 32/64 bits
- Windows Server 2008 R2 64 bits
- Windows 8 32/64 bits
- Windows Server 2012 64 bits

## Software Requirements

No other Trusted Cryptography product's driver installed on system

## Special Notice

- Both UI and Silent installation **MUST** be invoked with administrator privilege

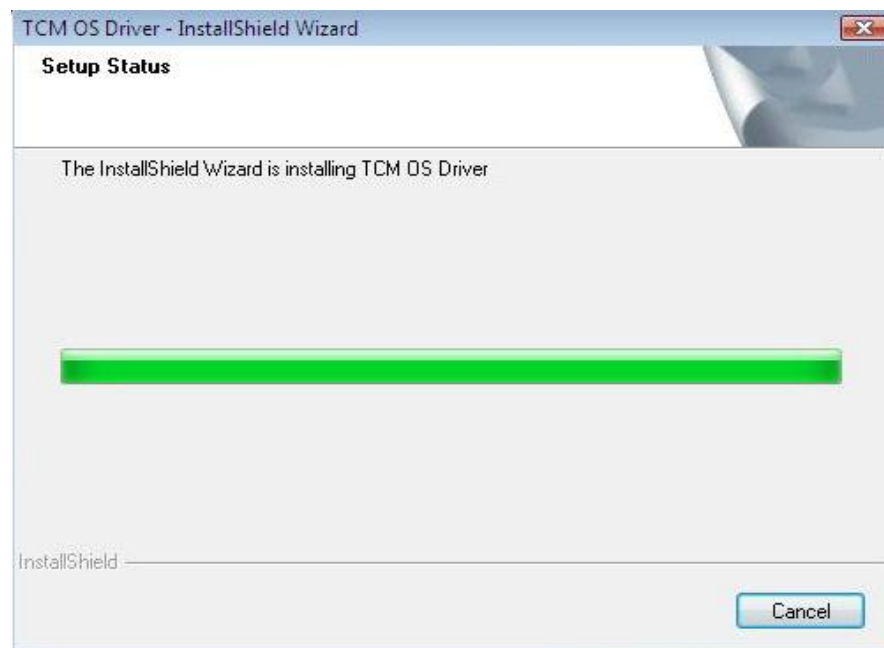
## 4. DRIVER INSTALL OPERATION WIZARD

### Attended Setup

### Install

If you don't have driver installed with this installation package on your system, please Install it manually as following steps.

**Step1.** Double clicks "TCMOSDriver.exe" to startup setup. You will see the executing dialog as Figure 1 shown.



**Figure 1 Setup is executing**

**Step2.** Waiting while executing, if you fill with the running requirement, it will execute successfully and click Finish button in the next dialog as Figure 2 shown .

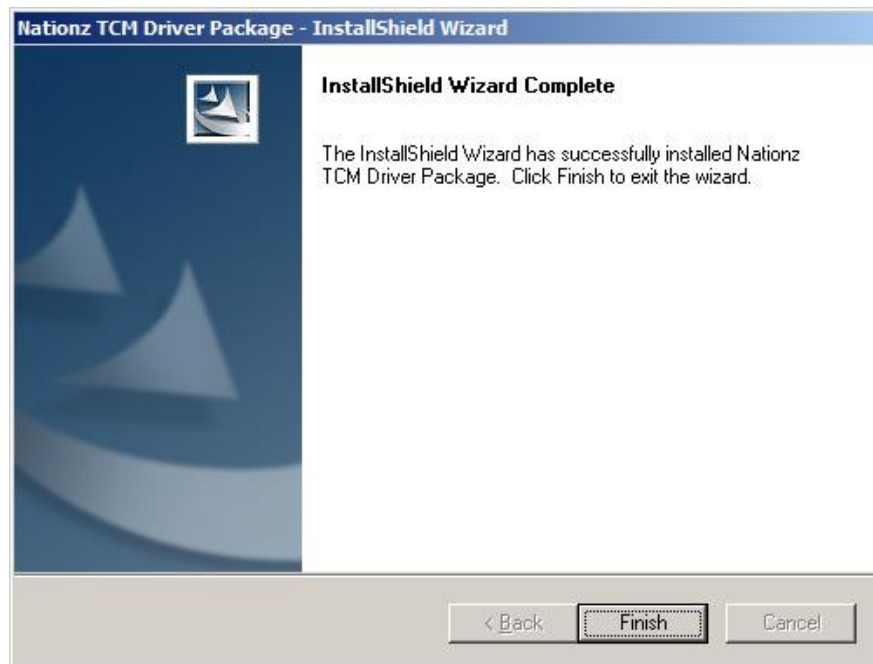


Figure 2 Install successfully

## Remove

**Step1.** If you have installed TCM OS Driver with this installation package on your computer, double click "TCMOSDriver.exe" to startup remove, shown as Figure 3.

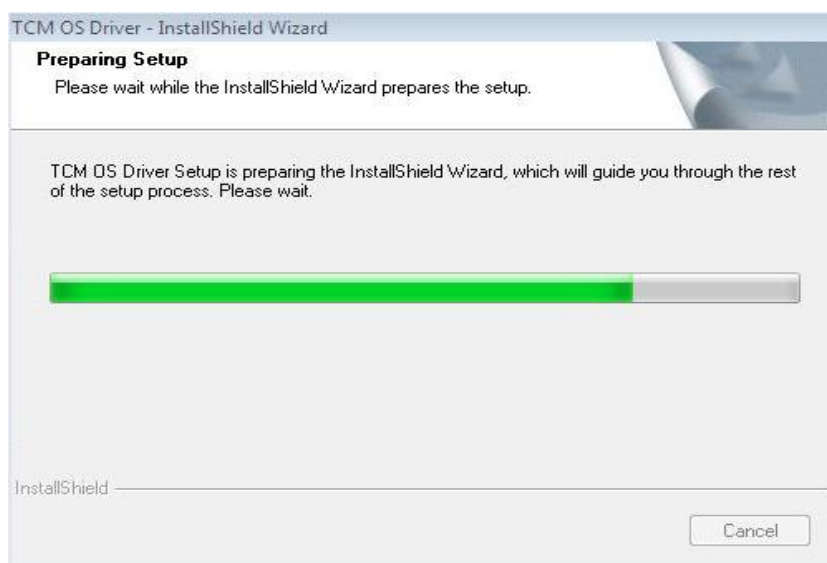


Figure 3 Remove Executing

**Step2.** Click finish button to complete removing

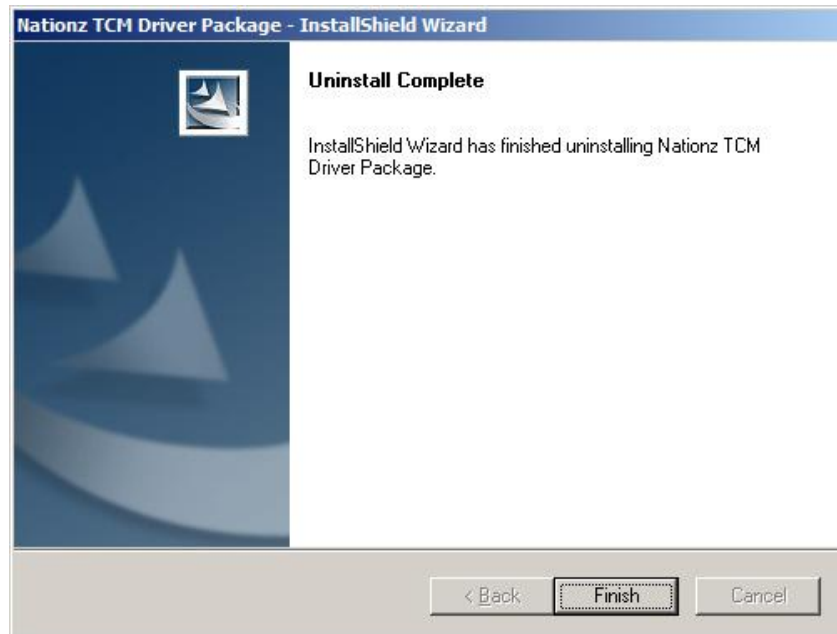


Figure 4 Remove successfully

## Unattended setup

The behavior of unattended setup is same with manual setup, and difference is you need operate it with command line and parameters in silent mode.

## Silent Install

If you didn't have driver installed with this installation package on your system you can install it silently according to following steps:

- Startup "cmd" with administrator privilege
- If you keep setup.iss located in the same folder, please implement as below:  
"TCMOSDriver.exe" /s

**Notes:** Make sure file TCMOSDriver.exe and **setup.iss** in the same directory.

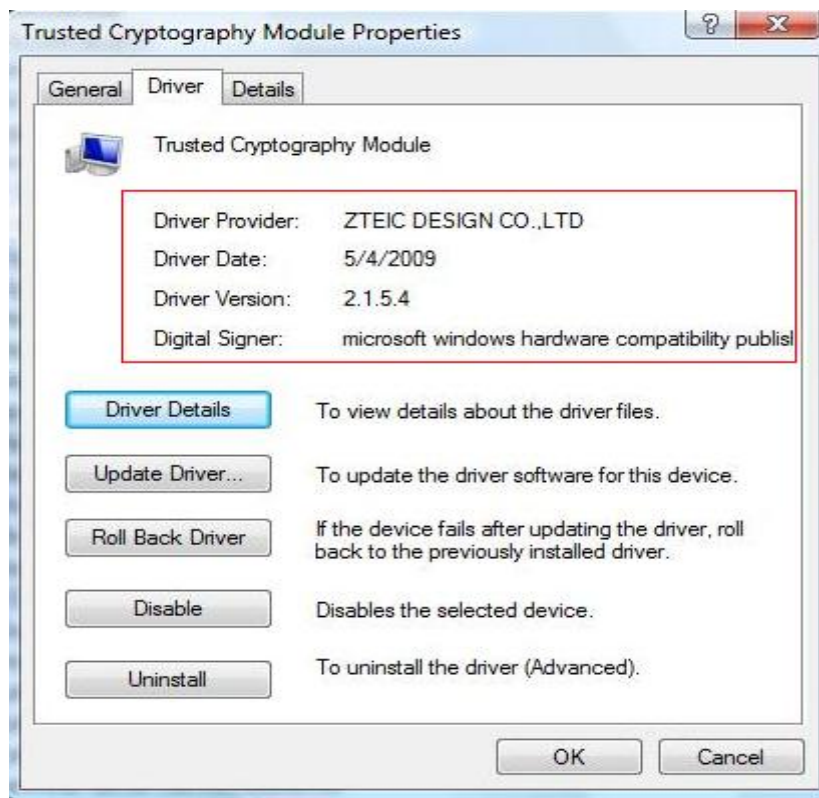
## 5. CHECK INSTALLED DRIVER VERSION

When you finish setup successfully, you will see Trusted Cryptography Module in Windows Device manager, as Figure 5 shown. Then right click the node and select properties you will get the driver version in the property dialog as Figure 6 shown.

You can startup Windows Device manager as follow steps: Right click "My Computer", and select "Manage", then you will see "Device Manager" On the left tree of window and click it.



**Figure 5 After Driver installed**



**Figure 6 Check Driver Version**