

TCMOSDriver Setup Package User Manual

Version 1.10

Nationz Technologies Inc.

January 7, 2014

CONTENTS

1. CONTENTS.....	2
2. REVISION HISTORY	3
3. RUNNING REQUIREMENT	3
Hardware Requirement	3
Compatible Platform	3
Version Information.....	4
Software Requirements	4
Special Notice	4
4. Driver Install OPERATION WIZARD.....	4
Attended Setup.....	4
Install.....	4
Remove.....	5
Unattended setup.....	6
Silent Install	6
5. Check installed driver version.....	7

REVISION HISTORY

Document Number	Revision Number	Description	Revision Date
1	1.0	Initial release	2010-01-21
2	1.1	TCM OS Driver Version2.2 for Windows server 2008 R2	2010-05-04
3	1.2	TCM OS Driver Version 2.3.0.1 For Windows XP/Vista/Server03/Server08/Win7 32bit and 64bit,Windows 2008 R2	2012-04-24
4	1.3	Without TCM Chip,Driver can't install success and TSM can't install success	2012-05-25
5	1.4	Driver Setup Packet Update to V2.3.0.3 for Dealing with Device Management has two TCM Device	2012-05-29
6	1.5	Driver Setup Packet Update to V2.3.0.4:On Some OS ,it can't Clear Packet Files fully When Uninstall on Previous Version.	2010-05-30
7	1.6	Support Windows 8	2012-09-25
8	1.7	Support Windows Server 2012	2012-10-16
9	1.8	Repair the problem on the Windows 8 and Windows Server 2012	2013-03-04
10	1.9	Support Windwos8.1/Windows Server 2012 R2(Standard/DataCenter/Foundation/Essentials)	2013-08-19
11	1.10	Add Vertion Information	2014-01-07

RUNNING REQUIREMENT

Hardware Requirement

1. Make sure that NATIONZ Trusted Cryptography Module chip has plugged in your motherboard
2. Please declare Nationz TCM PnPID(ZIC0101) in BIOS

Compatible Platform

- Windows XP 32/64 bits
- Windows Vista 32/64 bits
- Windows 7 32/64 bits
- Windows Server 2003 32/64 bits
- Windows Server 2008 32/64 bits
- Windows Server 2008 R2 64 bits
- Windows 8 32/64 bits
- Windows Server 2012 64 bits

- Windows 8.1 32/64 bits
- Windows Server 2012 R2 64 bits

Version Information

Version	System	TYPE	Signed Date
2.1.5.04	Windows XP Windows Vista Windows 7 Windows Server 2003 Windows Server 2008	32/64 bits	05/04/2009
2.2.0.0	Windows Server 2008 R2	64 bits	10/20/2009
2.3.0.0	Windows 8	32/64 bits	08/24/2012
2.4.0.0	Windows Server 2012	64 bits	10/11/2012
2.4.0.1	Windows 8.1	32/64 bits	07/16/2013
2.4.0.2	Windows Server 2012 R2	64 bits	08/01/2013

Software Requirements

No other Trusted Cryptography product's driver installed on system

Special Notice

- Both UI and Silent installation **MUST** be invoked with administrator privilege
- In Windows 8 /8.1, Windows Server 2012 , Windows Server 2012 R2, you should declare Nationz TCM PNPID(ZIC0101) in your BIOS and Enable your TCM in BIOS that you can see a unknown device of TCM before you install TCM OS Driver, otherwise you can't install TCM OS driver successfully.

Driver Install OPERATION WIZARD

Attended Setup

Install

If you don't have driver installed with this installation package on your system, please Install it manually as following steps.

Step1. Double clicks "TCMOSDriver.exe" to startup setup. You will see the executing dialog as Figure 1 shown.

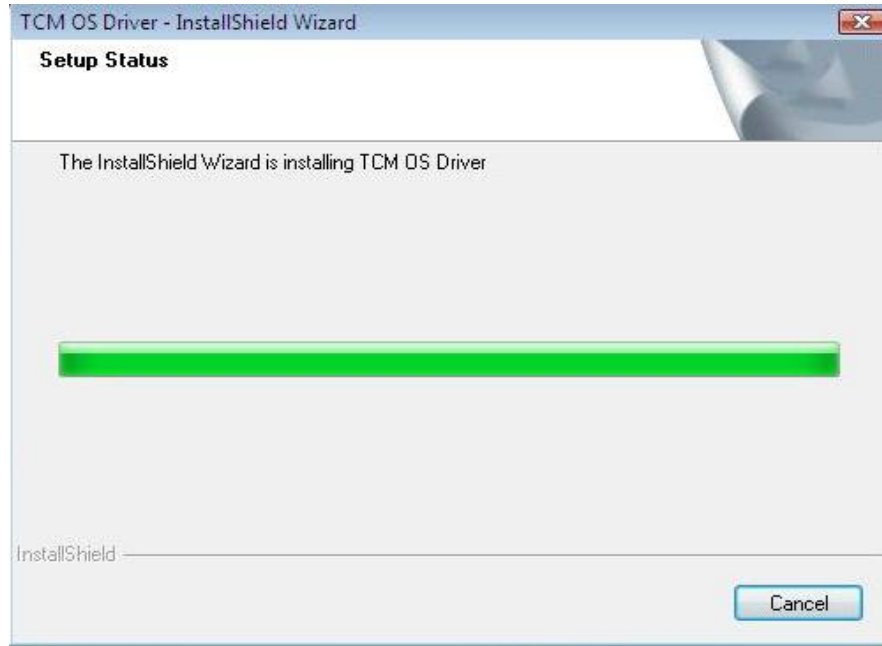


Figure 1 Setup is executing

Step2. Waiting while executing, if you fill with the running requirement, it will execute successfully and click Finish button in the next dialog as Figure 2 shown .

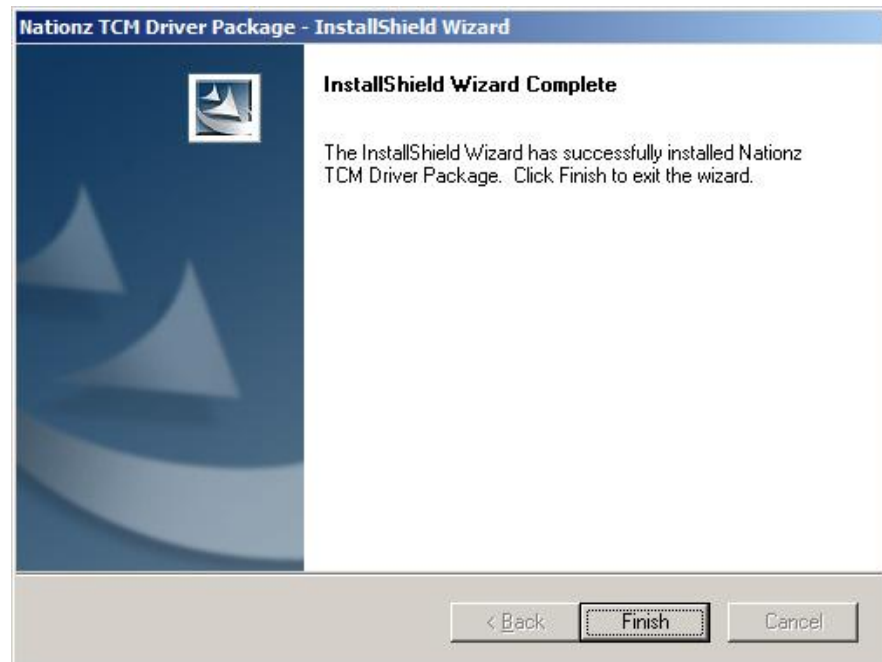


Figure 2 Install successfully

Remove

Step1. If you have installed TCM OS Driver with this installation package on your computer, double click "TCMOSDriver.exe" to startup remove, shown as Figure 3.

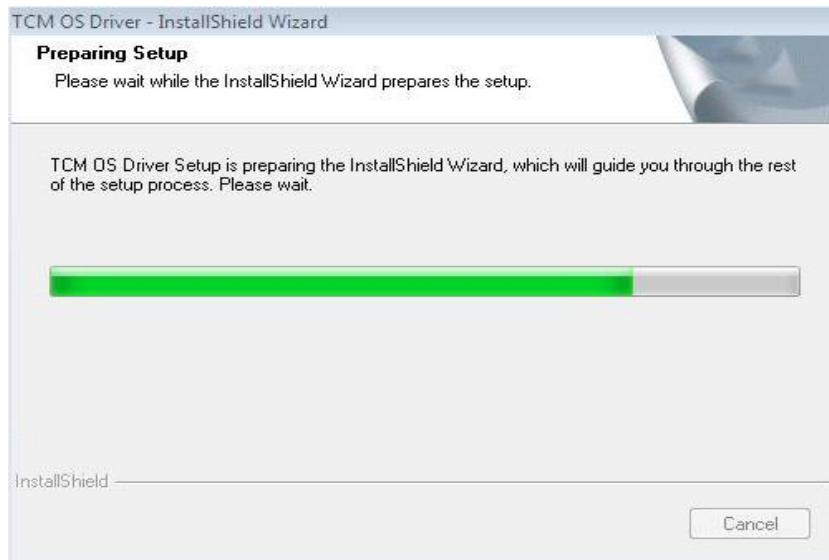


Figure 3 Remove Executing

Step2. Click finish button to complete removing

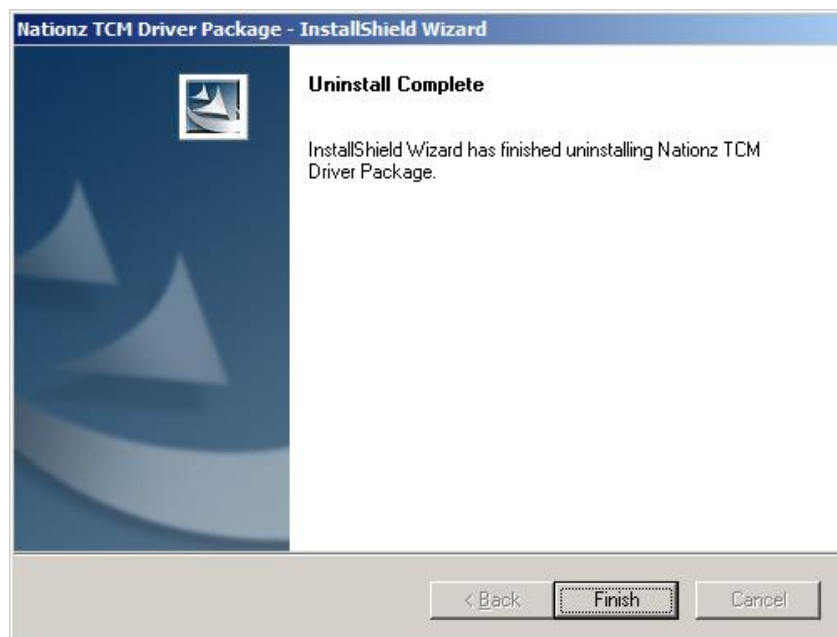


Figure 4 Remove successfully

Unattended setup

The behavior of unattended setup is same with manual setup, and difference is you need operate it with command line and parameters in silent mode.

Silent Install

If you didn't have driver installed with this installation package on your system you can install it silently according to following steps:

- Startup "cmd" with administrator privilege
- If you keep setup.iss located in the same folder ,please implement as below:
"TCMOSDriver.exe" /s

Notes: Make sure file TCMOSDriver.exe and **setup.iss** in the same directory.

Check installed driver version

When you finish setup successfully, you will see Trusted Cryptography Module in Windows Device manager, as Figure 5 shown. Then right click the node and select properties you will get the driver version in the property dialog as Figure 6 shown.

You can startup Windows Device manager as follow steps: Right click “My Computer”, and select “Manage”, then you will see “Device Manager” On the left tree of window and click it.

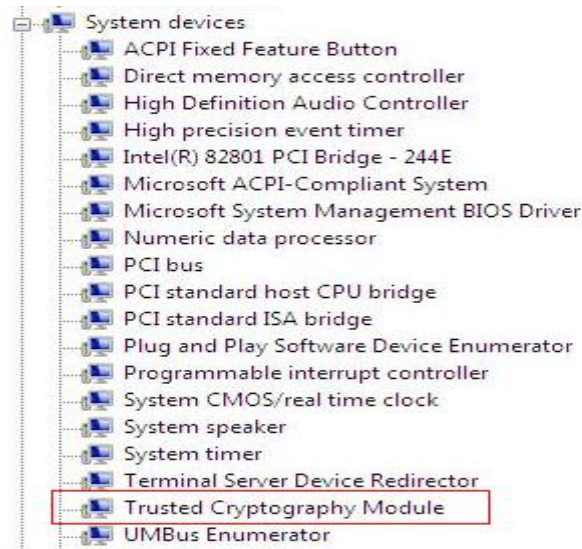


Figure 5 After Driver installed

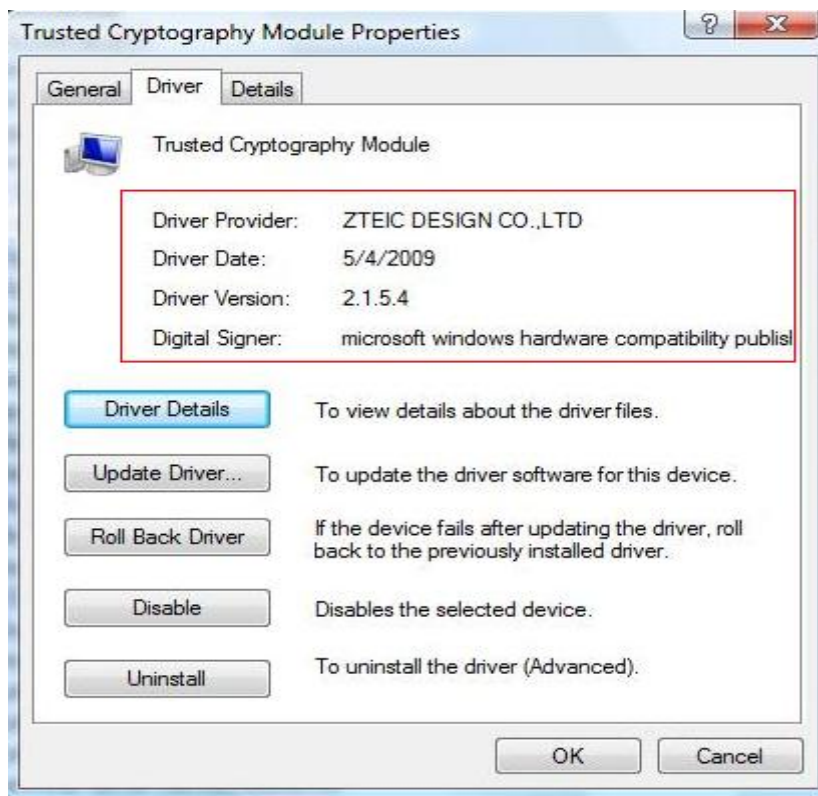


Figure 6 Check Driver Version