

Release Note NCI Proximity Driver over Intel ME

Document information

Info	Content
Author	Paul Aupoix
Author Role	Developer
Keywords	NXP Intel Proximity Driver Intel Management Engine Interface
Abstract	

Revision History

Revision	Date	Description	Author
V7.1	2013/10/04	Alpha release	AUPOIX Paul
V7.1.1	2013/10/09		AUPOIX Paul
V7.2	2013/11/08	Beta release	AUPOIX Paul
V7.3	2013/11/27		AUPOIX Paul
V7.4	2013/12/19		AUPOIX Paul
V7.5	2014/01/30		GORAND Charles
V7.5.2	2014/02/20		GORAND Charles
V7.5.3	2014/02/20		GORAND Charles
V7.6.0	2014/04/11		GORAND Charles
V7.6.1	2014/04/15		GORAND Charles
V7.6.2	2014/06/06		GORAND Charles
V7.6.3	2014/08/28		GORAND Charles
V7.6.4	2014/09/04		GORAND Charles
V7.6.5	2014/10/01		GORAND Charles

Contents

Contents	3
1. Document purpose	5
2. Installation instructions.....	5
1. Driver version 7.6.5.0	5
1.1 Material list	5
1.2 Driver Informations	5
1.3 Modification information	5
1.3.1 Driver	5
1.4 Possible problems and know errors and restrictions	6
2. Driver version 7.6.4.0	6
2.1 Material list	6
2.2 Driver Informations	6
2.3 Modification information	6
2.3.1 Driver	6
2.4 Possible problems and know errors and restrictions	6
3. Driver version 7.6.3.0	6
3.1 Material list	6
3.2 Driver Informations	7
3.3 Modification information	7
3.3.1 Driver	7
3.4 Possible problems and know errors and restrictions	7
4. Driver version 7.6.2.0	7
4.1 Material list	7
4.2 Driver Informations	8
4.3 Modification information	8
4.3.1 Driver	8
4.4 Possible problems and know errors and restrictions	8
5. Driver version 7.6.1.0	8
5.1 Material list	8
5.2 Driver Informations	8
5.3 Modification information	8
5.3.1 Driver	8
5.4 Possible problems and know errors and restrictions	8
6. Driver version 7.6.0.0	8
6.1 Material list	8
6.2 Driver Informations	9
6.3 Modification information	9
6.3.1 Driver	9
6.3.2 Radio Firmware :	9
6.3.3 Installer :	9
6.4 Possible problems and know errors and restrictions	9
7. Driver version 7.5.3.0	9
7.1 Material list	9
7.2 Driver Informations	9
7.3 Modification information	9
7.3.1 Driver	9
7.4 Possible problems and know errors and restrictions	9
8. Driver version 7.5.2.0	10
8.1 Material list	10
8.2 Driver Informations	10
8.3 Modification information	10
8.3.1 Driver	10
8.4 Possible problems and know errors and restrictions	10
9. Driver version 7.5.0.0	10
9.1 Material list	10

9.2	Driver Informations.....	10
9.3	Modification information	11
9.3.1	Driver	11
9.4	Possible problems and know errors and restrictions	11
10.	Driver version 7.4.0.0.....	11
10.1	Material list.....	11
10.2	Driver Informations.....	11
10.3	Modification information	11
10.3.1	Driver	11
10.4	Possible problems and know errors and restrictions	12
11.	Driver version 7.3.0.0.....	12
11.1	Material list.....	12
11.2	Driver Informations.....	12
11.3	Modification information	12
11.3.1	Driver	12
11.4	Possible problems and know errors and restrictions	12
12.	Driver version 7.2.0.0.....	12
12.1	Material list.....	12
12.2	Driver Informations.....	13
12.3	Modification information	13
12.3.1	Driver	13
12.4	Possible problems and know errors and restrictions	13
13.	Driver version 7.1.1.0.....	13
13.1	Material list.....	13
13.2	Driver Informations.....	13
13.3	Modification information	13
13.3.1	Driver	13
14.	Driver version 7.1.0.0.....	13
14.1	Material list.....	13
14.2	Driver Informations.....	14
15.	Appendix.....	15
15.1	Installer's switches	15
15.2	Radio and Power status.	15
15.3	How to run Radio Manager WHCK system tests	16

1. Document purpose

This document is the release note of NCI Proximity Driver. This document will describe content of the delivery and how to use installer.

2. Installation instructions

If the driver is provided as a silent installer, simply launch the setup.exe and the driver installation process should start. If the installer is not silent, a GUI should appear and let user proceed the installation. The installer can take several command line parameters:

/S : The installer will be silent if it's a non silent installer.

The installer may support additional switches, please have look in the related chapter in this document.

1. Driver version 7.6.5.0

1.1 Material list

This package contains the following files:

- **release_note_npc100.pdf** : this document
- **setup.exe** : installer for Proximity Driver.
- **driver_binaries/** : Binaries for Proximity Driver x86 & x64 for Windows 8.1, 8 and Windows 7
- **pdb/** : All pdb files for Proximity Driver for Windows 8.1, 8 and Windows 7

1.2 Driver Informations

- NXP Generic Driver Version

This driver is based on TG_WINPROXIMITY_2.0.1.26RC1

Firmware version 8.1.1C.

- PCSC Driver : 1.0.4.33

1.3 Modification information

1.3.1 Driver

- Merge with TG_WINPROXIMITY_2.0.1.26RC1
- Changes from baseline :
 - Proximity :
 - Add registry key ForcedEEPROMParam to apply NFCC settings.
 - Fix memory leak on IMEI/ME reset.
 - [PT_SC47071] State change is corrected in case on Non FeliCa tags
 - [PT_SC47345] Win7 : Most of the IOCTL request are failing
 - LibNfc :
 - [PT_SC47458] : [Work around] For FeliCa tag ignore presenceCheck in context of NdefCheck
 - Installer
 - Add /CONFIGXTAL switch to force crystal configuration.

1.4 Possible problems and know errors and restrictions

None.

2. Driver version 7.6.4.0 ---

2.1 Material list

This package contains the following files:

- **release_note_npc100.pdf** : this document
- **setup.exe** : installer for Proximity Driver.
- **driver_binaries/** : Binaries for Proximity Driver x86 & x64 for Windows 8.1, 8 and Windows 7
- **pdb/**: All pdb files for Proximity Driver for Windows 8.1, 8 and Windows 7

2.2 Driver Informations

- NXP Generic Driver Version

This driver is based on TG_WINPROXIMITY_2.0.1.25

Firmware version 8.1.1C.

- PCSC Driver : 1.0.4.33

2.3 Modification information

2.3.1 Driver

- Merge with TG_WINPROXIMITY_2.0.1.25
- Changes from baseline :
 - Proximity :
 - [PT_SC47380] : RF is OFF event after RF_DISCOVER_RSP is STATUS_OK
 - [PT_SC47024] Change in custom poll test cases to wait for user's input to close the custom poll.
 - [PT_SC46730] SC46705: [NPC100]driver crashed when place a smartphone on NPC100
 - [PT_SC47193] WUDF DriverStop : Completing a cancelable request
 - [PT_SC47237] Stop start custom poll hang issue seen in mutex.
 - LibNfc : No changes.

2.4 Possible problems and know errors and restrictions

None.

3. Driver version 7.6.3.0 ---

3.1 Material list

This package contains the following files:

- **release_note_npc100.pdf** : this document

- **setup.exe** : installer for Proximity Driver.
- **driver_binaries/** : Binaries for Proximity Driver x86 & x64 for Windows 8.1, 8 and Windows 7
- **pdb/**: All pdb files for Proximity Driver for Windows 8.1, 8 and Windows 7

3.2 Driver Informations

- NXP Generic Driver Version

This driver is based on TG_WINPROXIMITY_2.0.1.24

Firmware version 8.1.1C.

3.3 Modification information

3.3.1 Driver

- Merge with TG_WINPROXIMITY_2.0.1.24
- Changes from baseline :
 - o Proximity :
 - [PT_SC47304] :Container file for driver release ver 2.0.1.24
 - [PT_SC47237] : Proximity Manager state Update thru locking mechanism
 - [PT_SC47014] rc file 2.0.1.23RC10 and inf file changed
 - [PT_SC46879] [SC46746] Test App Freezes when p2p is moved in & to into proximity
 - [PT_SC47073]: Review fix for SE enum
 - [PT_SC47132] :Sometime IOCTL_GET_DEV_CAPABILITIES & IOCTL_GET_BRAND_INFO
 - [PT_SC47024] Stop Custom discovery failed with GS4 in proximity
 - [PT_SC46766] IhvNXPpropAPI.h is updated with return code STATUS_SYSTEM_POWERSTATE_TRANSITION
 - o LibNfc :
 - [PT_SC46730] SC46705: [NPC100]driver crashed when place SONY pink sim smartphone on NPC100.
 - [PT_SC46730] SC46705: [NPC100]driver crashed when place a smartphone on NPC100

3.4 Possible problems and know errors and restrictions

None.

4. Driver version 7.6.2.0 ---

4.1 Material list

This package contains the following files:

- **release_note_npc100.pdf** : this document
- **setup.exe** : installer for Proximity Driver.
- **driver_binaries/** : Binaries for Proximity Driver x86 & x64 for Windows 8.1, 8 and Windows 7
- **pdb/**: All pdb files for Proximity Driver for Windows 8.1, 8 and Windows 7

4.2 Driver Informations

- NXP Generic Driver Version

This driver is based on TG_WINPROXIMITY_2.0.1.20_AVGATE (+patches)

Firmware version 8.1.1C.

4.3 Modification information

4.3.1 Driver

- NCIS65 : [Win8.1] 7.6.0.0 WUDF Host Crash during Cs/Sx/ADK
- NCIS69 : NFC GPIO Manager Driver INF does not contain Manuf Information
- NCIS70 : NFCGPIO Manager Loading Catalog from Disk not Cache (see known issue section)

4.4 Possible problems and know errors and restrictions

NFC GPIO Driver might be different from Windows 7 installation & Windows 8/8.1.

5. Driver version 7.6.1.0

5.1 Material list

This package contains the following files:

- **release_note_npc100.pdf** : this document
- **setup.exe** : installer for Proximity Driver.
- **driver_binaries/** : Binaries for Proximity Driver x86 & x64 for Windows 8.1, 8 and Windows 7
- **pdb/** : All pdb files for Proximity Driver for Windows 8.1, 8 and Windows 7

5.2 Driver Informations

- NXP Generic Driver Version

This driver is based on TG_WINPROXIMITY_2.0.1.20 RC19 (+patches)

Firmware version 8.1.1B.

5.3 Modification information

5.3.1 Driver

- Fix Tag Writing with Felica Tags.

5.4 Possible problems and know errors and restrictions

None.

6. Driver version 7.6.0.0

6.1 Material list

This package contains the following files:

- **release_note_npc100.pdf** : this document
- **setup.exe** : installer for Proximity Driver.
- **driver_binaries/** : Binaries for Proximity Driver x86 & x64 for Windows 8.1, 8 and Windows 7
- **pdb/** : All pdb files for Proximity Driver for Windows 8.1, 8 and Windows 7

NXP

6.2 Driver Informations

- NXP Generic Driver Version

This driver is based on TG_WINPROXIMITY_2.0.1.20 RC19 (+patches)

Firmware version 8.1.1B.

6.3 Modification information

6.3.1 Driver

- Fix memory leaks
- Improve core reset managment.
- Merge with TG_WINPROXIMITY_2.0.1.20RC19
- Fix Issue in Radiomanager.
- Update libnfc for DTA compliancy.
- Force NCI fragmentation
- Fix NCIS62 "NXP Driver does not handle MEI driver reset correctly"
- Add INF Directive : UmdfHostProcessSharing=ProcessSharingDisabled

6.3.2 Radio Firmware :

- Firmware 8.1.1B

6.3.3 Installer :

- add /ACCEPTLICENSE (see Appendix for more details)

6.4 Possible problems and know errors and restrictions

None.

7. Driver version 7.5.3.0

7.1 Material list

This package contains the following files:

- **release_note_npc100.pdf** : this document
- **setup.exe** : installer for Proximity Driver.
- **driver_binaries/** : Binaries for Proximity Driver x86 & x64 for Windows 8.1, 8 and Windows 7
- **pdb/**: All pdb files for Proximity Driver for Windows 8.1, 8 and Windows 7

7.2 Driver Informations

- NXP Generic Driver Version

This driver is based on TG_WINPROXIMITY_2.0.1.20 RC6

Firmware version 8.1.13.

7.3 Modification information

7.3.1 Driver

- Remove folder and log file creation in C:\Temp

7.4 Possible problems and know errors and restrictions

None.

8. Driver version 7.5.2.0

8.1 Material list

This package contains the following files:

- **release_note_npc100.pdf** : this document
- **setup.exe** : installer for Proximity Driver.
- **driver_binaries/** : Binaries for Proximity Driver x86 & x64 for Windows 8.1, 8 and Windows 7
- **pdb/**: All pdb files for Proximity Driver for Windows 8.1, 8 and Windows 7

8.2 Driver Informations

- NXP Generic Driver Version

This driver is based on TG_WINPROXIMITY_2.0.1.20 RC6

Firmware version 8.1.13.

8.3 Modification information

8.3.1 Driver

- Fix for SK management by fixing the following :
 - o CORE_RESET_NTF management modified to be handled correctly during driver initialization.
 - o FW Ownership management reviewed to be disabled during whole driver initialization. In 7.5.0.0 FW Ownership was disabled only during first initialization and FW Download. In 7.5.1.2, FW Ownership is also disabled during any initialization (e.g. after CORE_RESET_NTF received when SK released)
- Fix for NCIS52 : Issue with Icon on Windows 7.

8.4 Possible problems and know errors and restrictions

None.

9. Driver version 7.5.0.0

9.1 Material list

This package contains the following files:

- **release_note_npc100.pdf**: this document
- **setup.exe** : installer for Proximity Driver.
- **driver_binaries/** : Binaries for Proximity Driver x86 & x64 for Windows 8.1, 8 and Windows 7
- **pdb/**: All pdb files for Proximity Driver for Windows 8.1, 8 and Windows 7

9.2 Driver Informations

- NXP Generic Driver Version

This driver is based on TG_WINPROXIMITY_2.0.1.20RC6

9.3 Modification information

9.3.1 Driver

- Merge with baseline proximity version TG_WINPROXIMITY_2.0.1.20RC6
- Fix NCIS37 FW ownership set to Disable after Disabling Proximity Driver
- Fix NCIS38 [Driver Installer] Installer needs to determine Card type automatically
- Fix NCIS17 S3 and S4 with TAG in the field raised a crash
- Fix NCIS34 [Win8.1] 7.2 WSB SDS, Radio Polls in C3 State
- Fix NCIS29 [Win8.1] 7.3 P2P URI Multiple Write crashes NFC Radio
- Fix NCIS24 [Win8.1] 7.2 Usermode Driver Crash during S3 Stress Cycle
- Fix NCIS44 [Win8.1] 7.4.5.1 Disabling the driver in device manager asks to restart computer
- Fix NCIS43 [Win8.1] 7.4.5.1 P2P URL transfer from Smart Device to Windows causes problem
- Firmware version 8.1.13

9.4 Possible problems and know errors and restrictions

- Known issues with Secure Key applet in stress conditions.

10.Driver version 7.4.0.0 ---

10.1 Material list

This package contains the following files:

- **release_note_npc100.pdf**: this document
- **setup.exe** : installer for Proximity Driver.
- **driver_binaries/** : Binaries for Proximity Driver x86 & x64 for Windows 8.1, 8 and Windows 7
- **pdb/**: All pdb files for Proximity Driver for Windows 8.1, 8 and Windows 7

10.2 Driver Informations

- NXP Generic Driver Version

This driver is based on 2.0.1.19_RC6

10.3 Modification information

10.3.1 Driver

- Merge with baseline proximity version 2.0.1.19RC6
- Fix VersionChecker GUID from Installer.
- Fix S3 issue with Tag in the field.
- Version Checker will now support radio type 0x02 / 0x11 (NCIS35)
- Fix NCIS28 [Win8.1] 7.3 Cannot enable/Disable driver without crash
- Fix NCIS5 [NCI] After successful activation and deactivation, sending RF_DISCOVER won't detect more cards
- Fix NCIS15 NCI driver is not enabling the support of Chunks as part of the init flow.
- Fix NCIS24 [Win8.1] 7.2 Usermode Driver Crash during S3 Stress Cycle
- Fix NCIS31 [Win8.1] 7.3 WUDF Host process Driver Crash on Reboot caused by NXPNFCProvider

NXP

- Fix NCIS27 [Win8.1] 7.3 Fiji Airplane Mode Puts driver in bad state
- Fix NCIS30 [Win8.1] 7.3 Failure mode prevents device from polling until 7.2 is installed

10.4 Possible problems and know errors and restrictions

- Driver might not recover when doing power transition / enable / disable with a P2P device on the radio (NCIS25 & NCIS26)
- After stress P2P test, the polling might not restart. (NCIS29)
- Still have issue with S3/S4 in long run test.

11.Driver version 7.3.0.0

11.1 Material list

This package contains the following files:

- **release_note_npc100.pdf**: this document
- **setup.exe** : installer for Proximity Driver.
- **driver_binaries/** : Binaries for Proximity Driver x86 & x64 for Windows 8.1, 8 and Windows 7
- **pdb/**: All pdb files for Proximity Driver for Windows 8.1, 8 and Windows 7

11.2 Driver Informations

- NXP Generic Driver Version

This driver is based on 2.0.1.17_RC3

11.3 Modification information

11.3.1 Driver

- Merge with baseline proximity version 2.0.1.17RC3
- Decrease initialization time (around 2.5 sec)
- Stabilization during S3 and S4 with and without tag (or P2P device)
- Add registry keys to manage EEPROM and RF configurations (reg file for Galapagos is launched during installation, option "/GALAPAGOS")
- Stabilization with secure key application (with or without tag)
- Check if HECI driver is enabled before installing the driver, installation error is raised otherwise

11.4 Possible problems and know errors and restrictions

- Power transition S3 and S4 with tag in the field may raise a proximity crash (NCIS 17)
- Test application v1.6.5 (and previous) may not fully functional (a new version 1.6.6 exists which fixes this issue)

12.Driver version 7.2.0.0

12.1 Material list

This package contains the following files:

- **release_note_npc100.pdf**: this document
- **setup.exe** : installer for Proximity Driver.

NXP

- **driver_binaries/** : Binaries for Proximity Driver x86 & x64 for Windows 8.1, 8 and Windows 7
- **pdb/**: All pdb files for Proximity Driver for Windows 8.1, 8 and Windows 7

12.2 Driver Informations

- NXP Generic Driver Version

This driver is based on 2.0.1.17_RC2

12.3 Modification information

12.3.1 Driver

- Merge with baseline proximity version 2.0.1.17RC2
- Firmware version 8.1.D

12.4 Possible problems and know errors and restrictions

- Power transition S3 and S4 with tag in the field may raise a proximity crash (NCIS 17)
- Initialization takes 8 seconds (NCIS 18)
- Test application v1.6.5 (and previous) may not fully functional (a new version 1.6.6 exists which fixes this issue)

13.Driver version 7.1.1.0

13.1 Material list

This package contains the following files:

- **release_note_npc100.pdf**: this document
- **setup.exe** : installer for Proximity Driver.
- **driver_binaries/** : Binaries for Proximity Driver x86 & x64 for Windows 8.1, 8 and Windows 7
- **pdb/**: All pdb files for Proximity Driver for Windows 8.1, 8 and Windows 7

13.2 Driver Informations

- NXP Generic Driver Version

This driver is based on 2.0.1.10

13.3 Modification information

13.3.1 Driver

- NCIS13: Driver fails Microsoft BinScope Test
- NCIS14: Debug symbol missing from Driver
- Fix issue in download mode on Win8.1 x86 platform

14.Driver version 7.1.0.0

14.1 Material list

This package contains the following files:

- **release_note_npc100.pdf**: this document

- **setup.exe** : installer for Proximity Driver.
- **driver_binaries/** : Binaries for Proximity Driver x86 & x64 for Windows 8 and Windows 7
- **pdbs/**: All pdb files for Proximity Driver for Windows 8 and Windows 7

14.2 Driver Informations

- NXP Generic Driver Version

This driver is based on 2.0.1.10

15. Appendix

15.1 Installer's switches

The driver installer support the following switches :

```
setup.exe [/SD] [/LOG=path] [/X=path] /RFOFF /WIZARD /ACCEPTLICENSE
```

Note : A valid path is an absolute path with the following format :

- PATH_WITH_NO_SPACES
- "PATH_WITH_NO_SPACES"
- "PATH WITH SPACES"

Options :

/SD : Completely silent mode.

This option disables all the message boxes, no notification will appear, even on error.

/LOG : Log file.

By default, a log file named "install_log.txt" is created in the installation directory.

If this option is used, the log file name used is the complete path. The log file contains the following information :

- The time when the application has been launched
- The state of the silent mode (ON or OFF)
- The confirmation of extraction of the driver in the path precised if /X option has been used
- If an error occurs, a description of this error
- The final status of the installation, and the time when the application stopped.

/X : Extract driver binaries to specified path without installing anything else.

/DX : Extract driver following MUP specification.

/RFOFF : The radio does not polling after installing the driver.

/WIZARD : Enable Installer WIZARD for silent installer. /SD override this switch.

/S : Enable silent mode. Popup are still displayed if an error occurs.

/ACCEPTLICENSE : When using **/S** or **/SD**, this switch silently accept license.

/CONFIGXTAL : Force crystal configuration.

15.2 Radio and Power status.

This table indicates the Radio status, Power status (Ven) and libnfc status depending on platform state.

Transition	Ven status	Radio status	LibNfc status
Boot	Toggled OFF/ON	Polling ON	initialized
SX/CS/BOOT => S0	Toggled OFF/ON	Polling ON	initialized
S0 => S1 (Screen Off)	Ven OFF	Polling OFF	deinitialized
S0 => S3	Ven OFF	Polling OFF	deinitialized
S0 => S4	Ven OFF	Polling OFF	deinitialized
S0 => S5	Ven OFF	Polling OFF	deinitialized
S0 => CS	Ven OFF	Polling OFF	deinitialized
Driver enabled	Toggled OFF/ON	Polling ON	initialized
Driver disabled	Ven OFF	Polling OFF	deinitialized
Air plane mode ON / NFC Off	Ven OFF	Polling OFF	deinitialized
Air plane mode OFF / NFC On	Toggled OFF/ON	Polling ON	initialized

15.3 How to run Radio Manager WHCK system tests

"Radio Manager - Verify Radio State" & "Radio Manager - Verify SetRadioState" WHCK system tests are known to failed on some configuration. This issue is caused by a registry key that does not have the right permission. During the WHCK test, these tests try to access this registry key but failed due to permission denied.

The tests may failed with the following errors in HCK logs :

"Could not CoCreate Media Radio Manager."

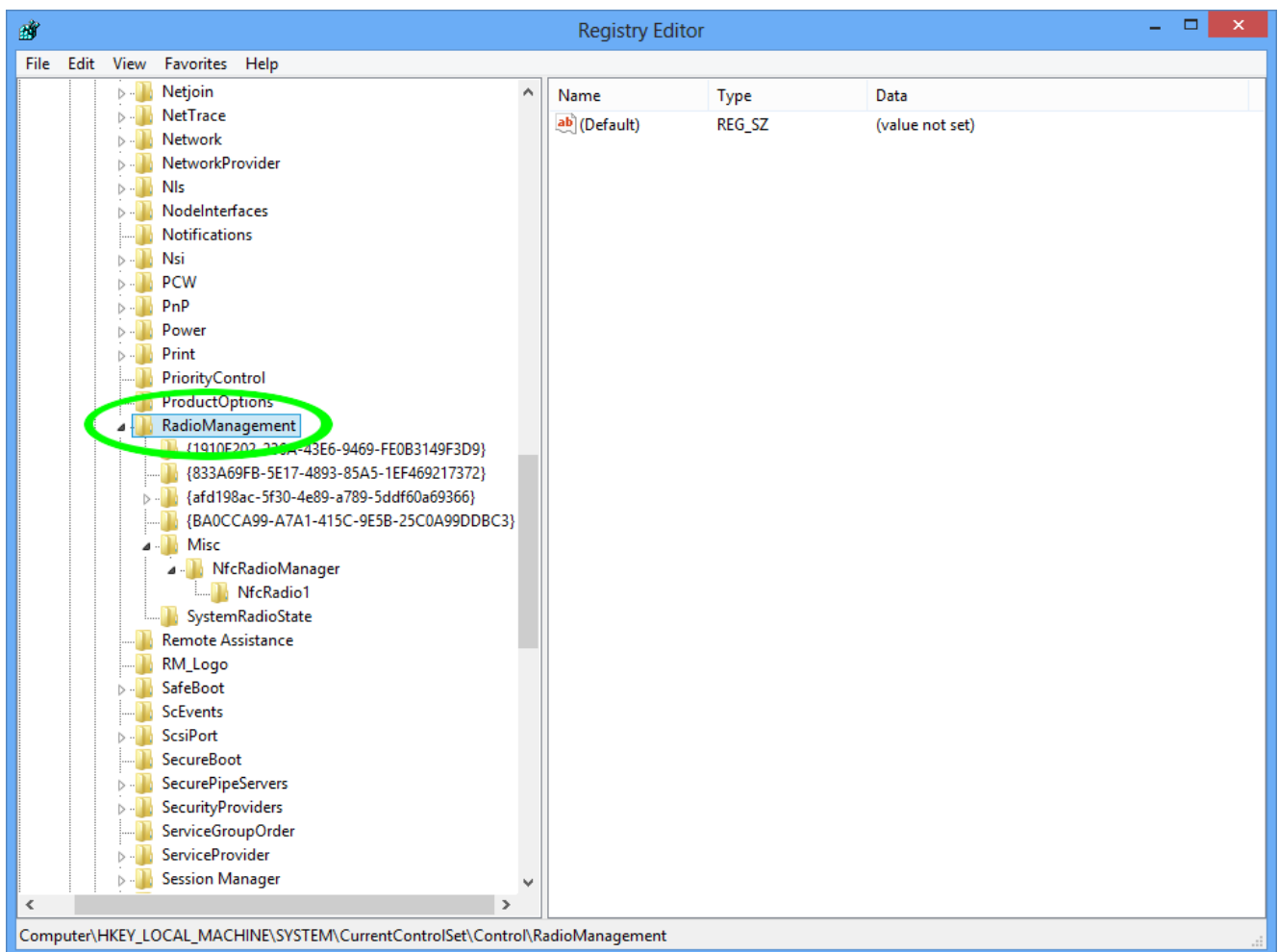
and

"Unable to find registered radio

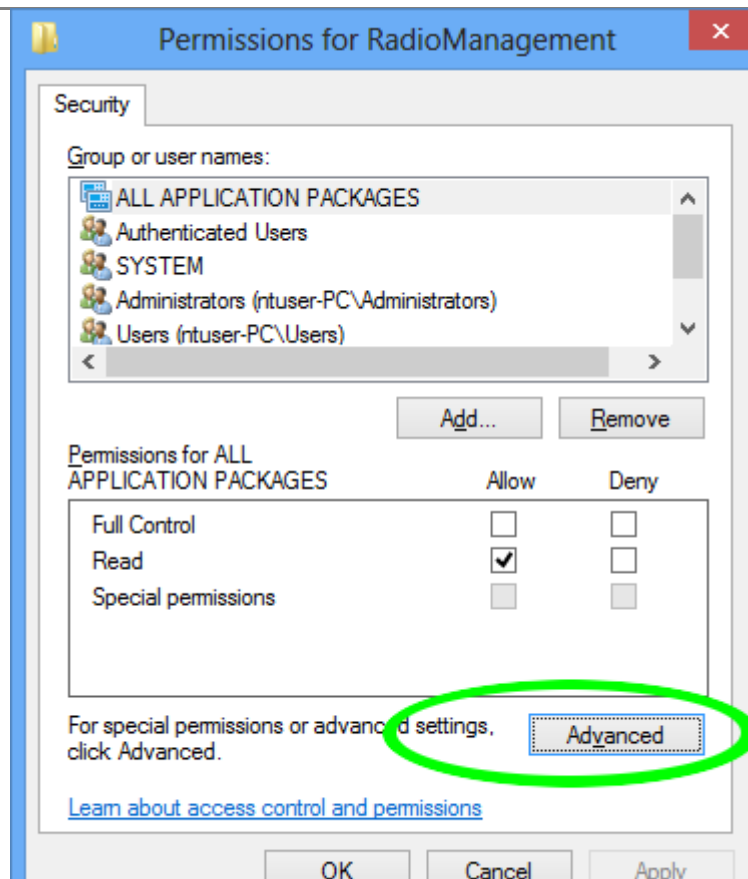
SYSTEM\CurrentControlSet\Control\RadioManagement\Misc\NfcRadioManager\NfcRadio1! Are the RadioMgrSignature and RadiolInstanceID parameter correct?"

To solve the issue, follow this procedure on computer under tests :

1. Launch regedit
2. go to HKLM\SYSTEM\CurrentControlSet\Control\RadioManagement

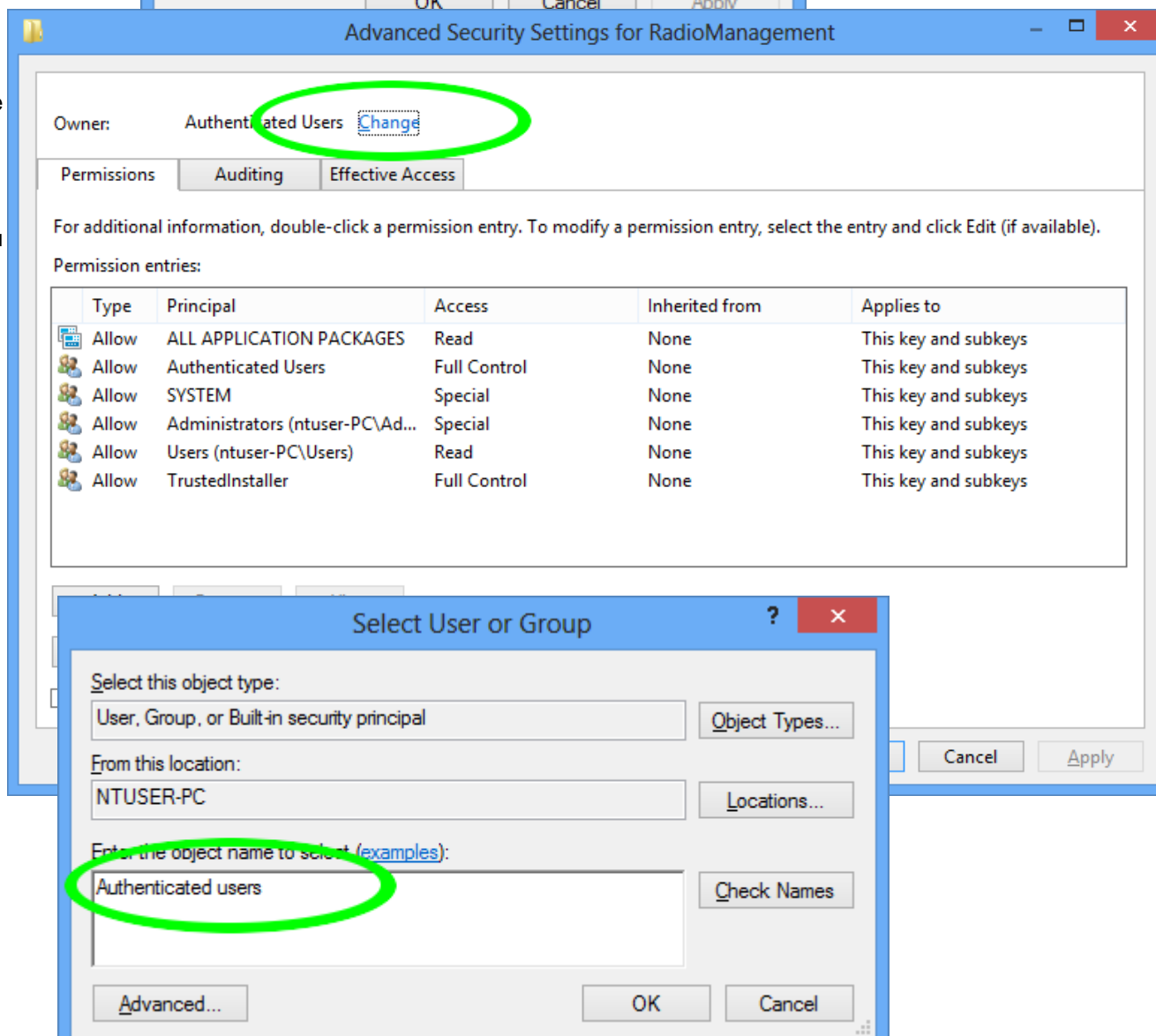


3. Right click on "RadioManagement" => Permissions
4. Click on Advanced

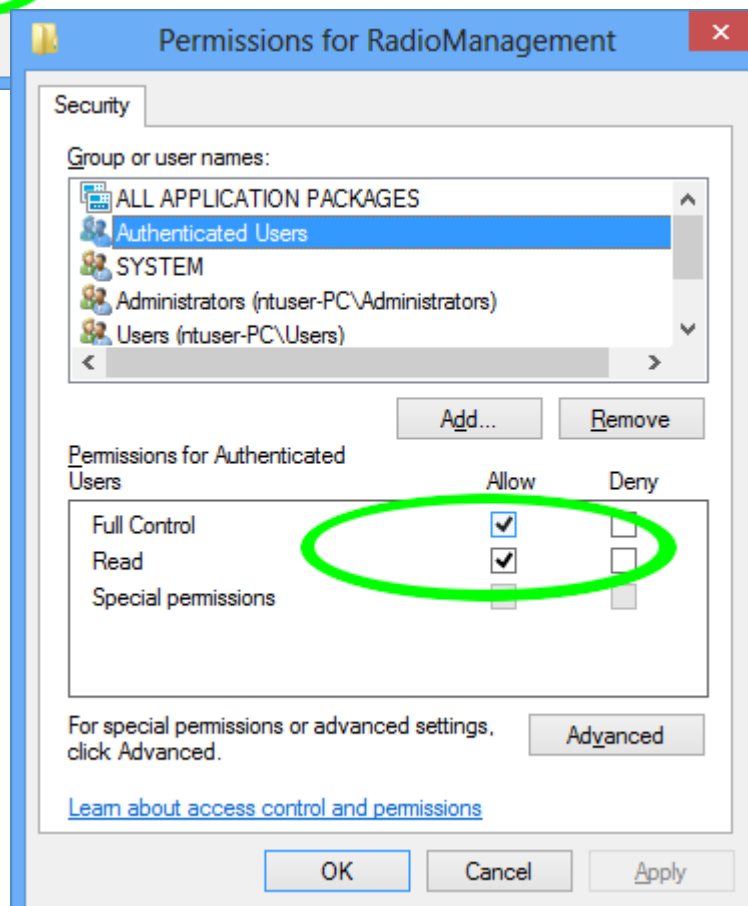
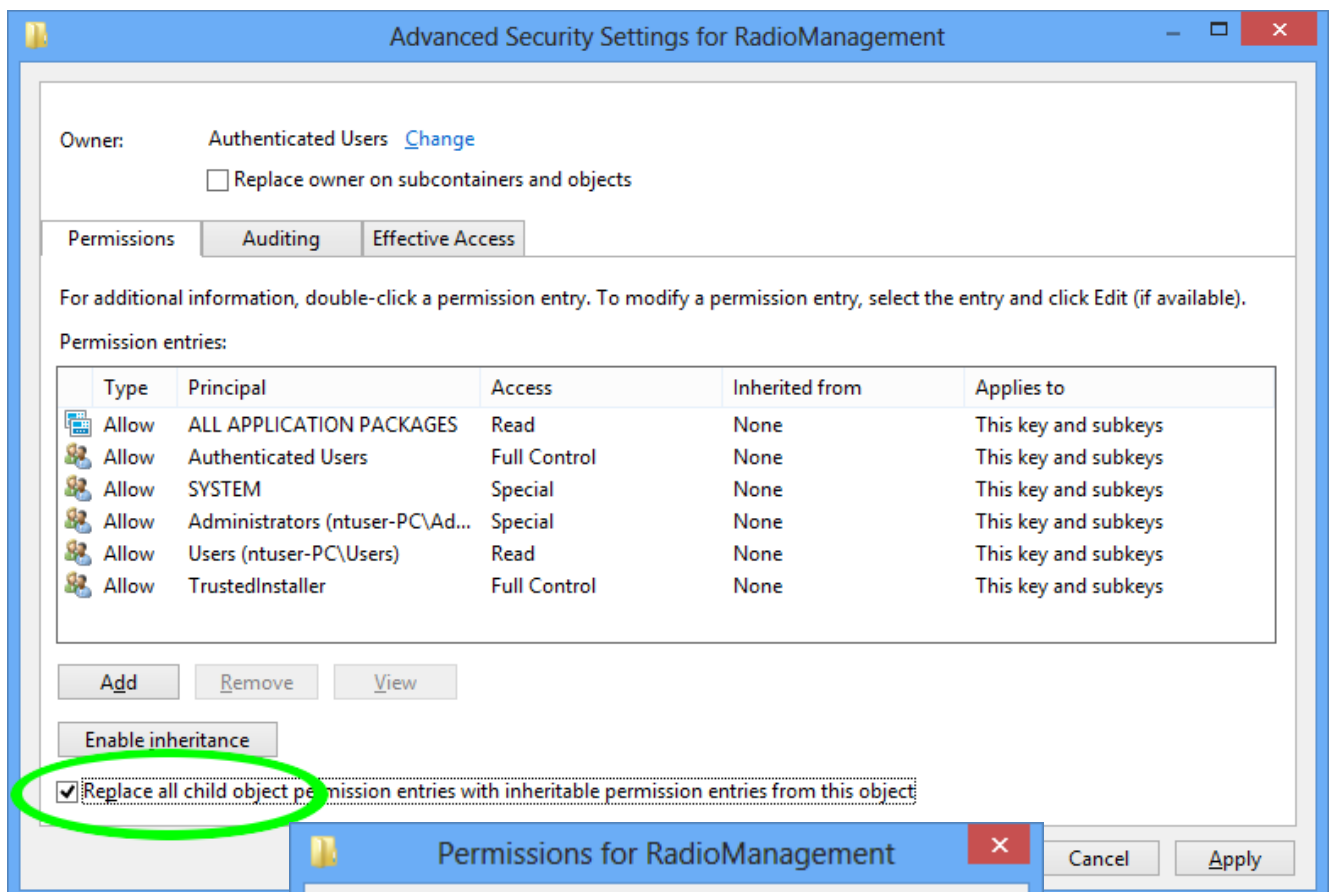


5. On "Owner : " "Change" <= click on Change

6. Set user to Authenticated users and click ok

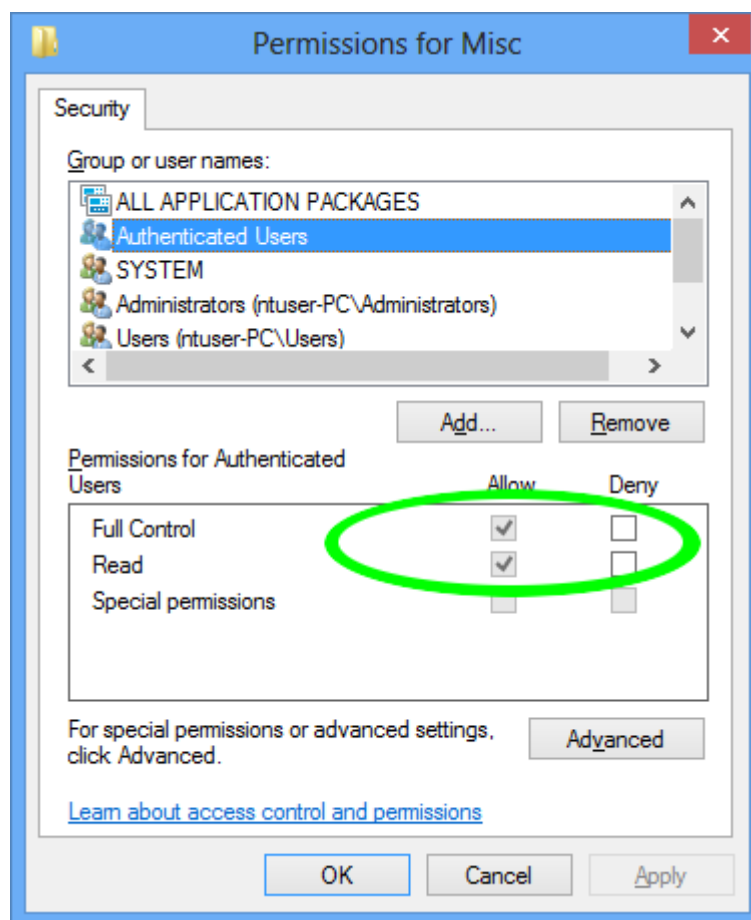


7. Then check the radio box "Replace all child objects permission ..." and on Apply => and Ok.



8. The window will close and then click on Authenticated users and change permissions to Full Control

9. Apply and close the windows
10. Check that subfolder Misc has full control for Authenticate users.



11. If subfolder Misc has not full control for Authenticate users
 - Download PSEXEC from <http://technet.microsoft.com/en-us/sysinternals/bb897553.aspx>
 - Launch it as follow : PSEXEC -i -s -d CMD
12. Launch Regedit again from the prompt opened by PSEXEC, and restart procedure from 2.

Once it's done, start WHCK tests as follow :

Machine View Devices Help

Windows Hardware Certification Kit

WIN2008

Configuration | Connect

ProximityDriverTest

Project Selection **Tests** Results Package

Run Selected

Status	Test Name	Type	Length	Target	Machine
<input type="checkbox"/>	Glitchfree HD Video Playback on Battery (DC) Power	M	20m	NTUSER-PC	NTUSER-PC
<input type="checkbox"/>	Gyroscope Sensor Test (System)	M	02m	NTUSER-PC	NTUSER-PC
<input type="checkbox"/>	Hal timer tests (HCT)	A	07m	NTUSER-PC	NTUSER-PC
<input type="checkbox"/>	Hardware Offload of Audio Processing Test (System)	A	02m	NTUSER-PC	NTUSER-PC
<input type="checkbox"/>	HID Radio Button - Verify HID Usages	M	02m	NTUSER-PC	NTUSER-PC
<input type="checkbox"/>	KS Position Test (System)	A	02m	NTUSER-PC	NTUSER-PC
<input type="checkbox"/>	KS Topology Test (System)	A	02m	NTUSER-PC	NTUSER-PC
<input type="checkbox"/>	Lullaby Test (System)	A	02m	NTUSER-PC	NTUSER-PC
<input type="checkbox"/>	MADT FVT Testing	A	02m	NTUSER-PC	NTUSER-PC
<input type="checkbox"/>	Mobile Broadband Requires GPS	A	02m	NTUSER-PC	NTUSER-PC
<input type="checkbox"/>	MultiPhaseResume	A	10m	NTUSER-PC	NTUSER-PC
<input type="checkbox"/>	NX Test	A	05m	NTUSER-PC	NTUSER-PC
<input type="checkbox"/>	PC Resume	A	02m	NTUSER-PC	NTUSER-PC
<input type="checkbox"/>	PCI Hardware Compliance Test For Systems	A	10m	NTUSER-PC	NTUSER-PC
<input type="checkbox"/>	PerfX2 D2D Bench Scenarios (may require manual intera	M	30m	NTUSER-PC	NTUSER-PC
<input type="checkbox"/>	PerfX2 DImage Scenarios (may require manual interacti	M	30m	NTUSER-PC	NTUSER-PC
<input type="checkbox"/>	PerfX2 IE10 Scenarios (may require manual interactio	M	30m	NTUSER-PC	NTUSER-PC
<input checked="" type="checkbox"/>	Radio Manager - Verify Radio State	A	02m	NTUSER-PC	NTUSER-PC
<input checked="" type="checkbox"/>	Radio Manager - Verify SetRadioState	A	02m	NTUSER-PC	NTUSER-PC
<input type="checkbox"/>	Round Trip Test (System, Manual)	M	02m	NTUSER-PC	NTUSER-PC
<input type="checkbox"/>	Secure Boot Logo Test	M	10m	NTUSER-PC	NTUSER-PC
<input type="checkbox"/>	Secure Boot Manual Logo Test	M	01h 30m	NTUSER-PC	NTUSER-PC
<input type="checkbox"/>	Sensor Ambient Light Data Fields	A	02m	NTUSER-PC	NTUSER-PC
<input type="checkbox"/>	Sensor Ambient Light Data Lux Events	M	02m	NTUSER-PC	NTUSER-PC
<input type="checkbox"/>	Sensor Ambient Light Data Report Lux	A	02m	NTUSER-PC	NTUSER-PC
<input type="checkbox"/>	Sensor DataReport Validation Test (System)	M	02m	NTUSER-PC	NTUSER-PC
<input type="checkbox"/>	Sensor Location Data Report	A	02m	NTUSER-PC	NTUSER-PC
<input type="checkbox"/>	Sensor Minimum Supported Data Fields	A	02m	NTUSER-PC	NTUSER-PC
<input type="checkbox"/>	Sensor Missing Property	A	02m	NTUSER-PC	NTUSER-PC
<input type="checkbox"/>	Sensor Properties Test (System)	A	02m	NTUSER-PC	NTUSER-PC

ProximityDriverTest

- Targets
 - NTUSER-PC
- OS Platforms
 - Windows 8 x64
- Product Types
 - Passed: 0 test(s)
 - Failed: 0 test(s)
 - Running: 0 test(s)
 - Not Run: 100 test(s)
 - Total: 100 test(s)**

Start Initial Configuration T... HCK Manager - [Job ... Windows Hardwar...

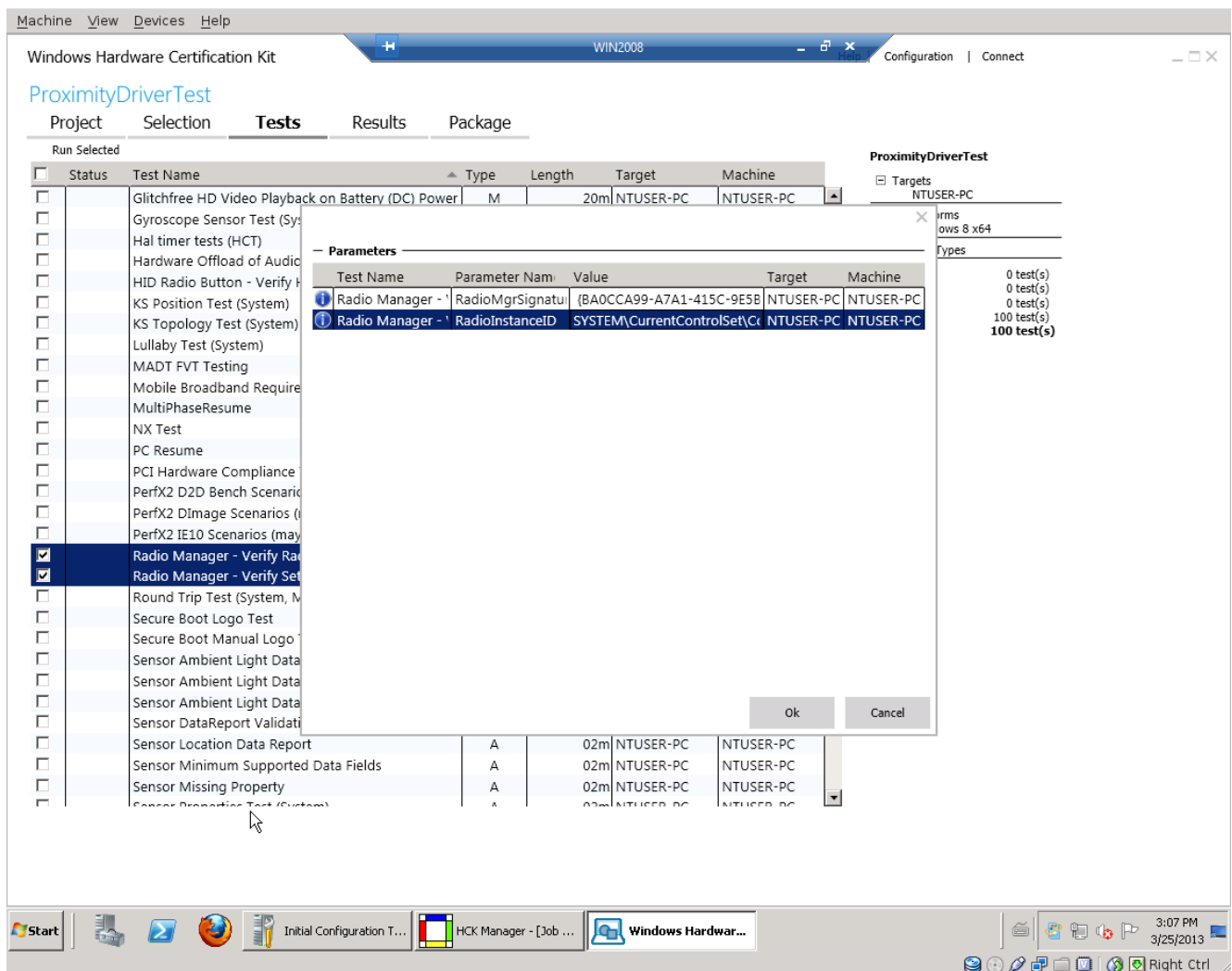
3:05 PM 3/25/2013

Right Ctrl

You should enter this informations :

RadioMgrSignature = {BA0CCA99-A7A1-415C-9E5B-25C0A99DDDBC}

RadiInstanceID = SYSTEM\CurrentControlSet\Control\RadioManagement\Misc\NfcRadioManager\NfcRadio1



Then start the tests. After a while the test should succeed :

Machine View Devices Help

Windows Hardware Certification Kit

WIN2008

Configuration | Connect

ProximityDriverTest

Project Selection Tests Results Package

Run Selected

Status	Test Name	Type	Length	Target	Machine
<input type="checkbox"/>	Firmware Post Time test	M	22m	NTUSER-PC	NTUSER-PC
<input type="checkbox"/>	Firmware Update test	A	10m	NTUSER-PC	NTUSER-PC
<input type="checkbox"/>	Glitchfree HD Video Playback on AC (Manual on mc	M	20m	NTUSER-PC	NTUSER-PC
<input type="checkbox"/>	Glitchfree HD Video Playback on Battery (DC) Power	M	20m	NTUSER-PC	NTUSER-PC
<input type="checkbox"/>	Gyroscope Sensor Test (System)	M	02m	NTUSER-PC	NTUSER-PC
<input type="checkbox"/>	Hal timer tests (HCT)	A	07m	NTUSER-PC	NTUSER-PC
<input type="checkbox"/>	Hardware Offload of Audio Processing Test (System)	A	02m	NTUSER-PC	NTUSER-PC
<input type="checkbox"/>	HID Radio Button - Verify HID Usages	M	02m	NTUSER-PC	NTUSER-PC
<input type="checkbox"/>	KS Position Test (System)	A	02m	NTUSER-PC	NTUSER-PC
<input type="checkbox"/>	KS Topology Test (System)	A	02m	NTUSER-PC	NTUSER-PC
<input type="checkbox"/>	Lullaby Test (System)	A	02m	NTUSER-PC	NTUSER-PC
<input type="checkbox"/>	MADT FVT Testing	A	02m	NTUSER-PC	NTUSER-PC
<input type="checkbox"/>	Mobile Broadband Requires GPS	A	02m	NTUSER-PC	NTUSER-PC
<input type="checkbox"/>	MultiPhaseResume	A	10m	NTUSER-PC	NTUSER-PC
<input type="checkbox"/>	NX Test	A	05m	NTUSER-PC	NTUSER-PC
<input type="checkbox"/>	PC Resume	A	02m	NTUSER-PC	NTUSER-PC
<input type="checkbox"/>	PCI Hardware Compliance Test For Systems	A	10m	NTUSER-PC	NTUSER-PC
<input type="checkbox"/>	PerfX2 D2D Bench Scenarios (may require manual in	M	30m	NTUSER-PC	NTUSER-PC
<input type="checkbox"/>	PerfX2 DImage Scenarios (may require manual intera	M	30m	NTUSER-PC	NTUSER-PC
<input type="checkbox"/>	PerfX2 IE10 Scenarios (may require manual interacti	M	30m	NTUSER-PC	NTUSER-PC
<input checked="" type="checkbox"/>	Radio Manager - Verify Radio State	A	02m	NTUSER-PC	NTUSER-PC
<input checked="" type="checkbox"/>	Radio Manager - Verify SetRadioState	A	02m	NTUSER-PC	NTUSER-PC
<input type="checkbox"/>	Round Trip Test (System, Manual)	M	02m	NTUSER-PC	NTUSER-PC
<input type="checkbox"/>	Secure Boot Logo Test	M	10m	NTUSER-PC	NTUSER-PC
<input type="checkbox"/>	Secure Boot Manual Logo Test	M	01h 30m	NTUSER-PC	NTUSER-PC
<input type="checkbox"/>	Sensor Ambient Light Data Fields	A	02m	NTUSER-PC	NTUSER-PC
<input type="checkbox"/>	Sensor Ambient Light Data Lux Events	M	02m	NTUSER-PC	NTUSER-PC
<input type="checkbox"/>	Sensor Ambient Light Data Report Lux	A	02m	NTUSER-PC	NTUSER-PC
<input type="checkbox"/>	Sensor DataReport Validation Test (System)	M	02m	NTUSER-PC	NTUSER-PC
<input type="checkbox"/>	Sensor Location Data Report	A	02m	NTUSER-PC	NTUSER-PC

ProximityDriverTest

Targets

- NTUSER-PC

OS Platforms

- Windows 8 x64

Product Types

Passed: 2 test(s)
Failed: 0 test(s)
Running: 0 test(s)
Not Run: 98 test(s)
Total: 100 test(s)

Start

Initial Configuration T...

HCK Manager - [Job ...

Windows Hardwar...

3:59 PM
3/25/2013

Right Ctrl