

# AMI UEFI BIOS Flash SOP for Windows

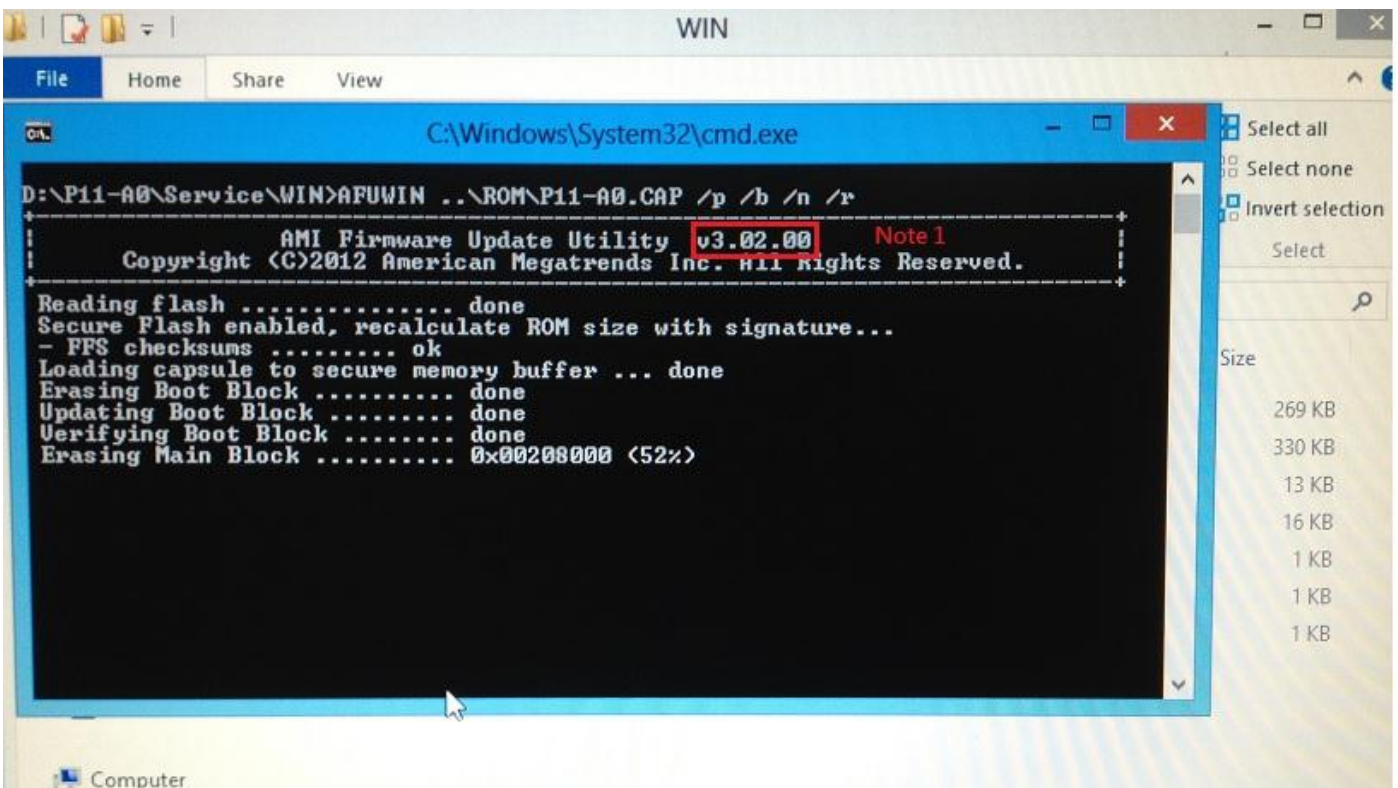
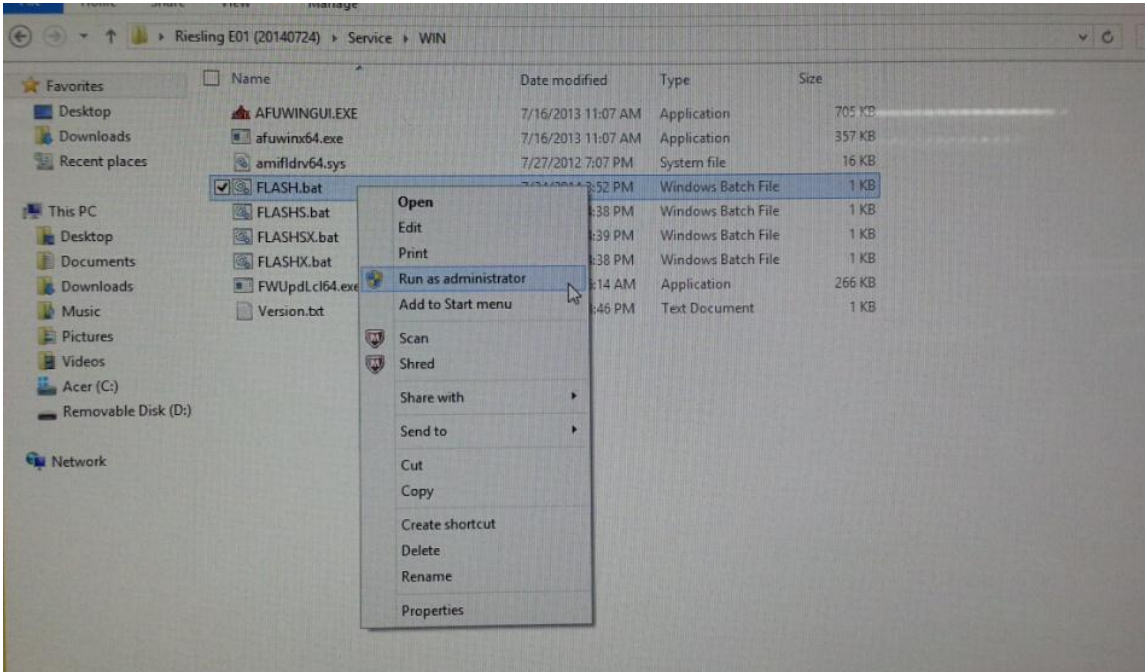
**Document Revision: v1.6**

**Contents**

**1.Flash UEFI BIOS SOP for Windows ..... 2**

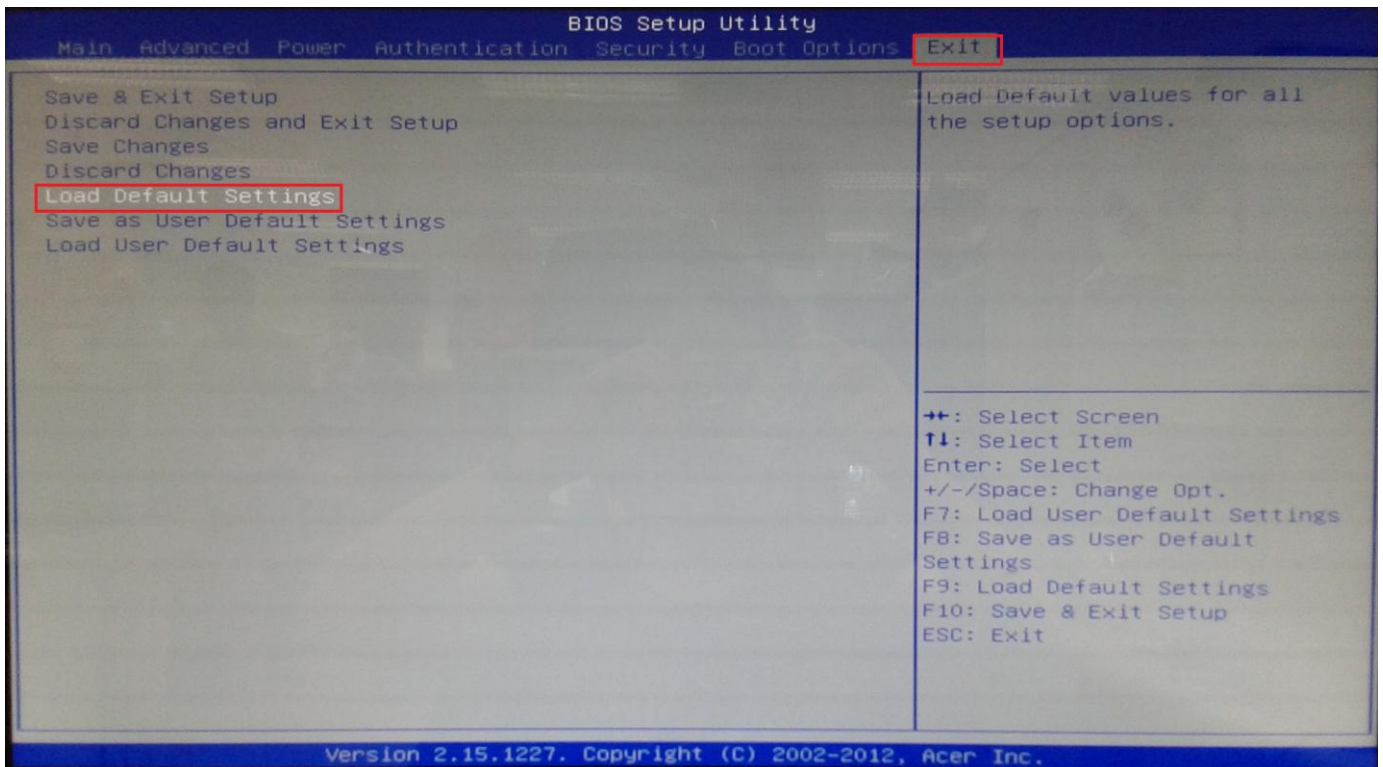
# 1. Flash UEFI BIOS SOP for Windows

1. Copy BIOS folder under OS Desktop.
2. In BIOS folder, select WIN folder and run the **batch file** as administrator.

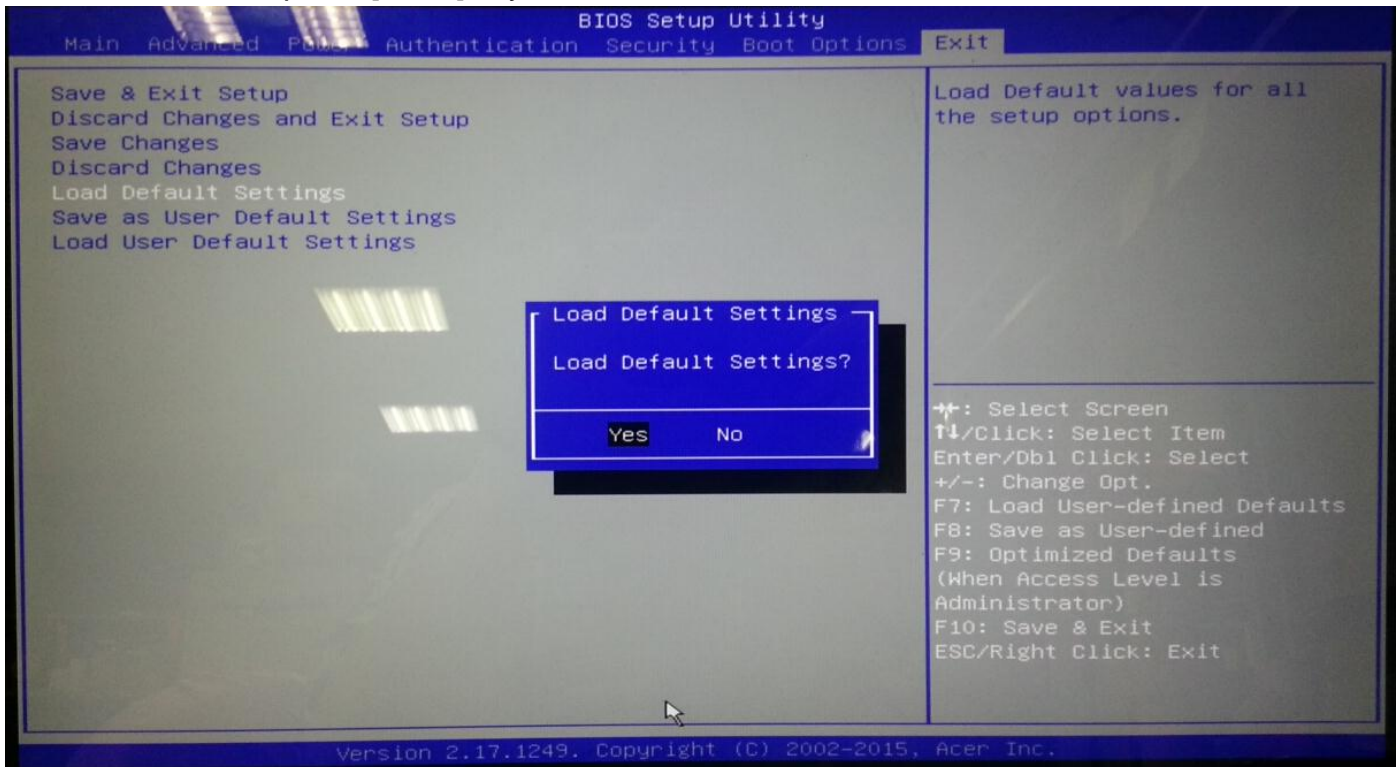


**Note 1: The AFUWIN tool version is by case.**

4. After finish flashing BIOS, please don't execute any programs and reboot the system directly.
5. When system reboot, please press [Del] to enter BIOS Setup
6. In "Exit" page, select "Load Default Settings" and press [Enter] key.

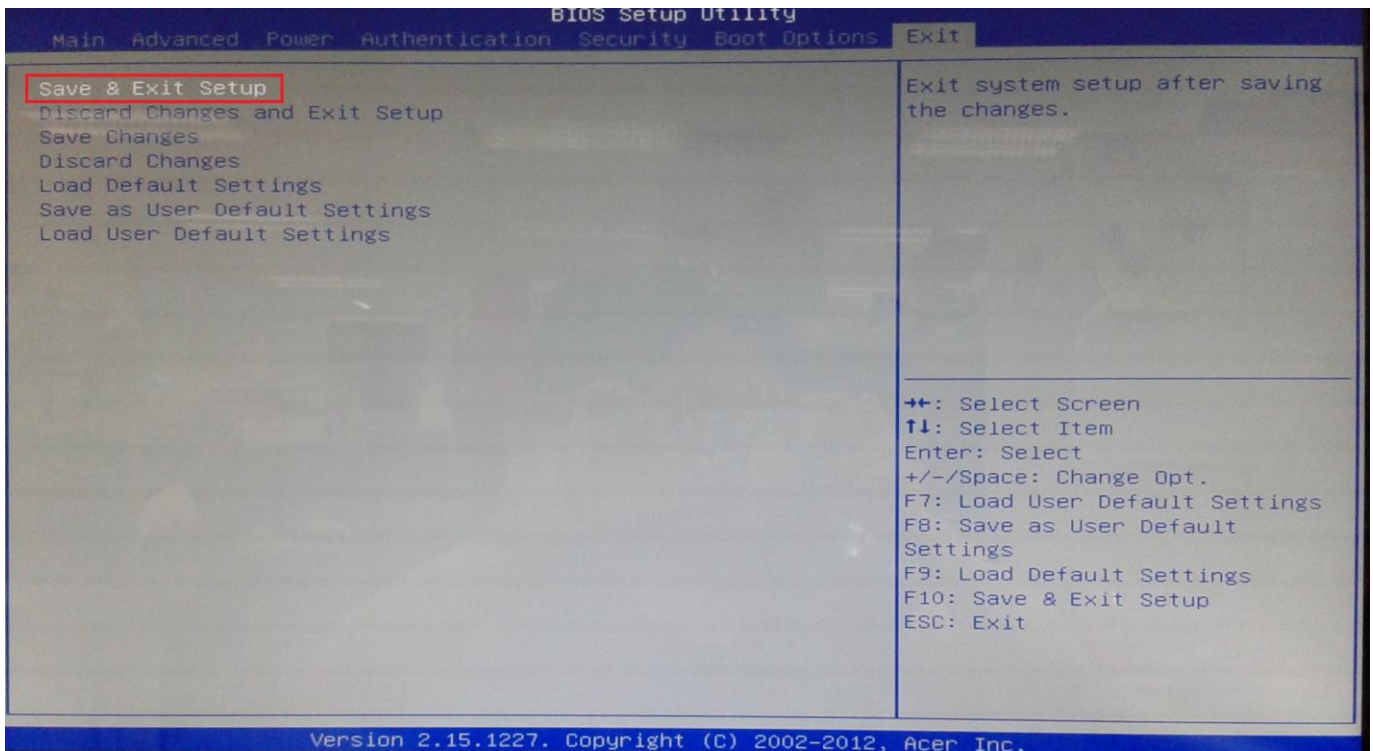


7. Select "Yes" and press [Enter] key.

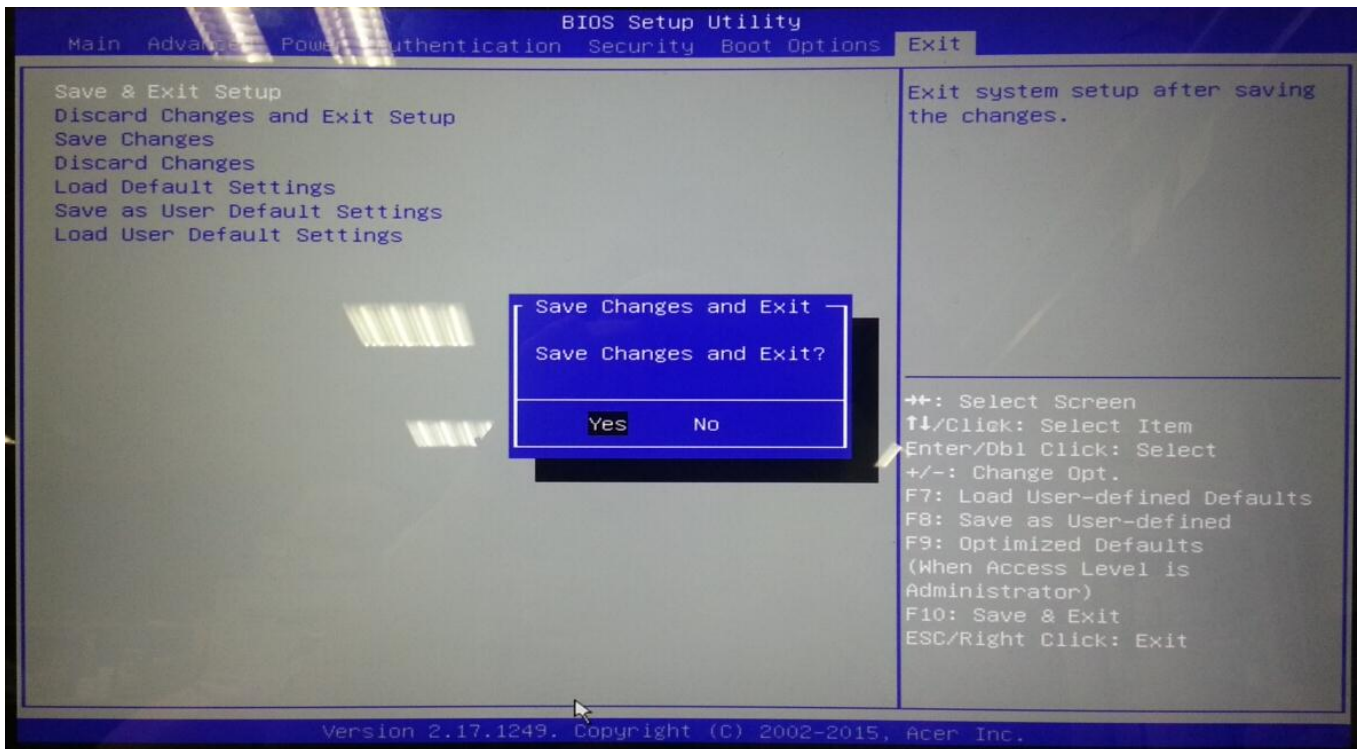




8. Select “Save & Exit Setup” and press [Enter] key.



9. Select “Yes” and press [Enter] key.



10. Flash BIOS is finished.