

AMI UEFI BIOS Flash SOP for Windows

Document Revision: v1.4

Issue Date: 2012/09/03

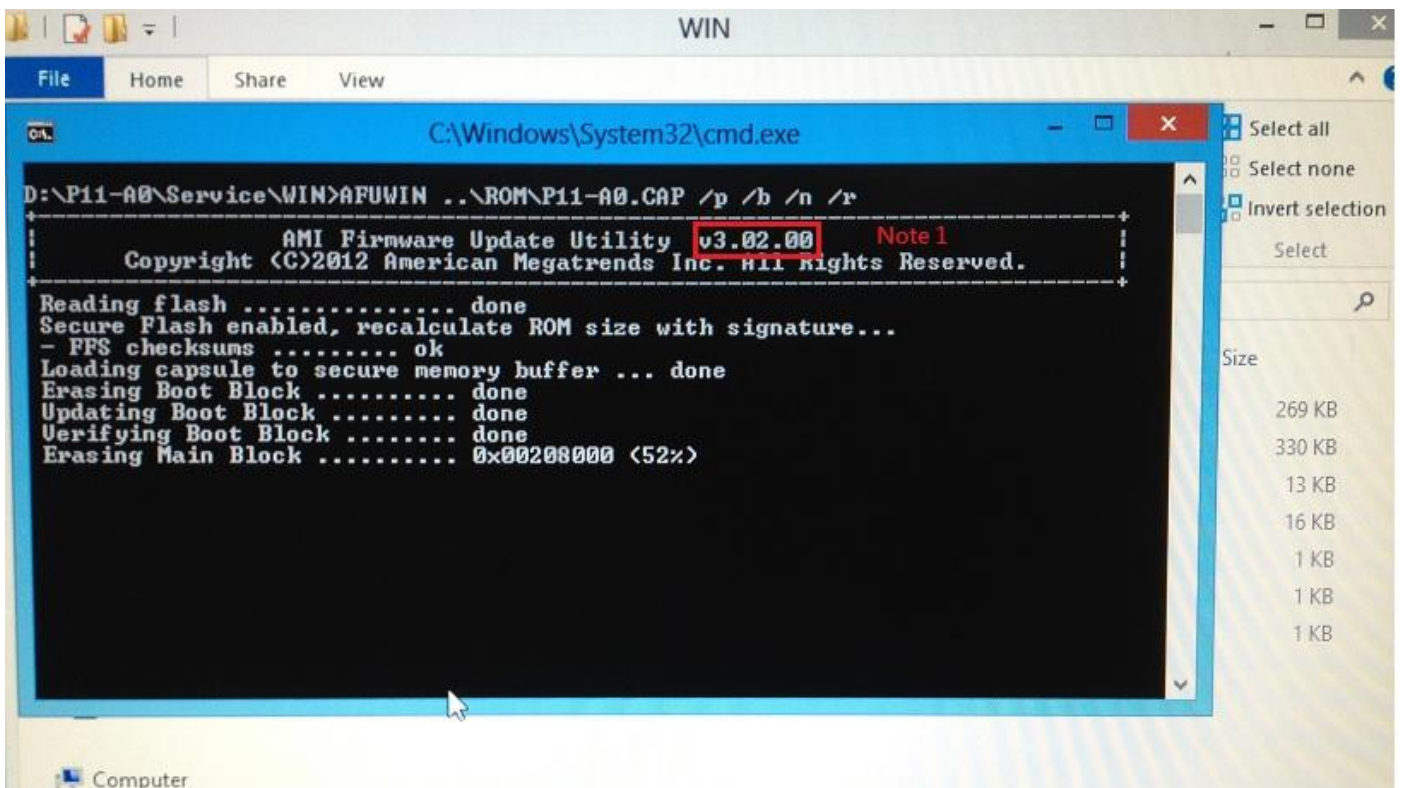
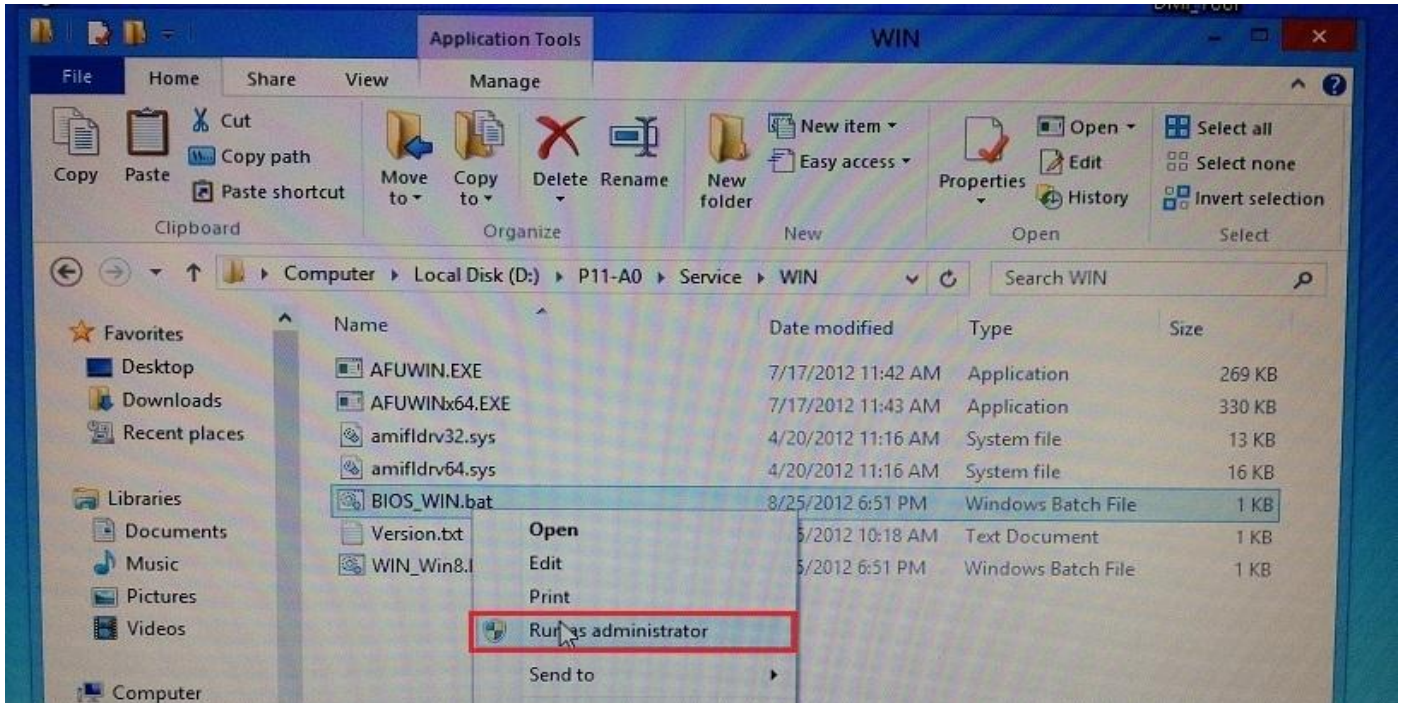
Author: Jade Chen

Contents

1.Flash UEFI BIOS SOP for Windows2

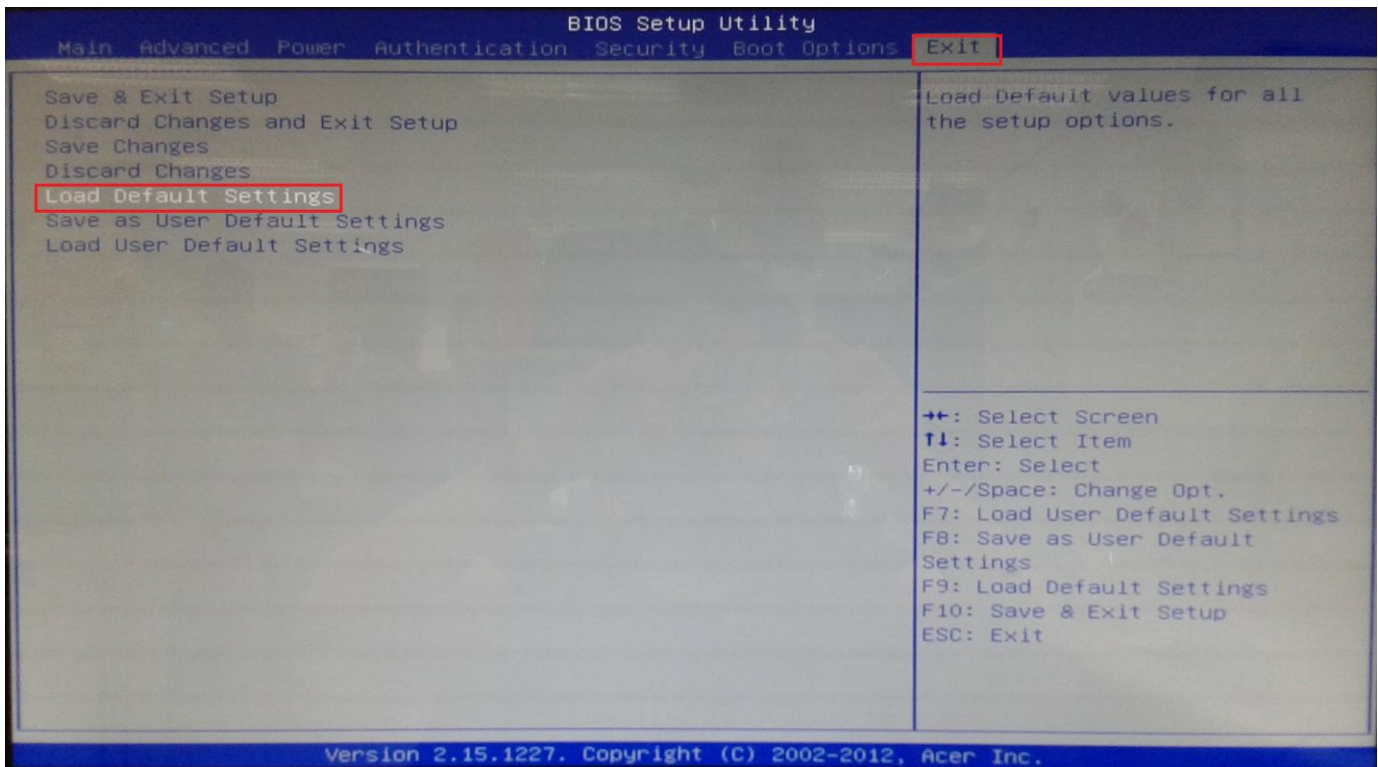
1. Flash UEFI BIOS SOP for Windows

1. Copy BIOS folder under OS Desktop.
2. In BIOS folder, select WIN folder and run **"BIOS_WIN.bat"** as administrator.

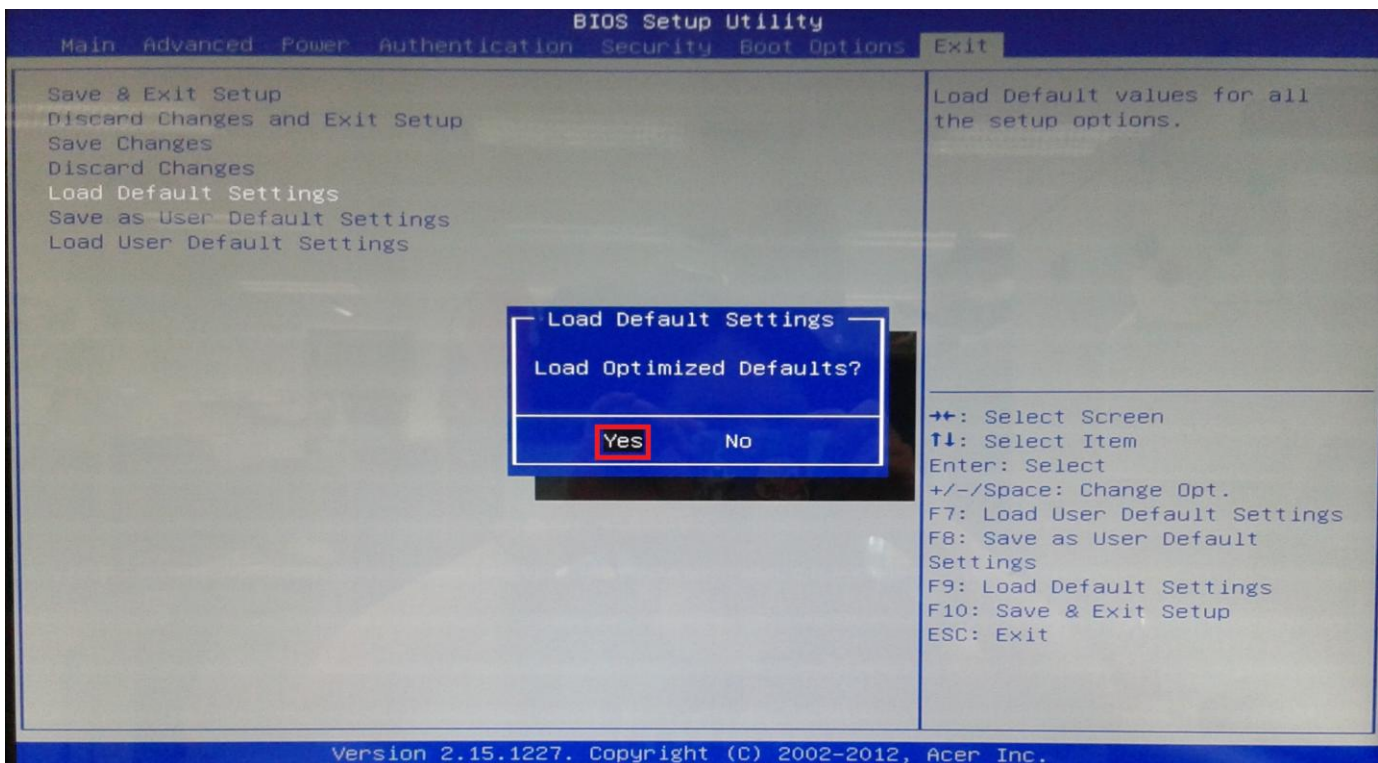


Note 1: The AFUWIN tool version is by case.

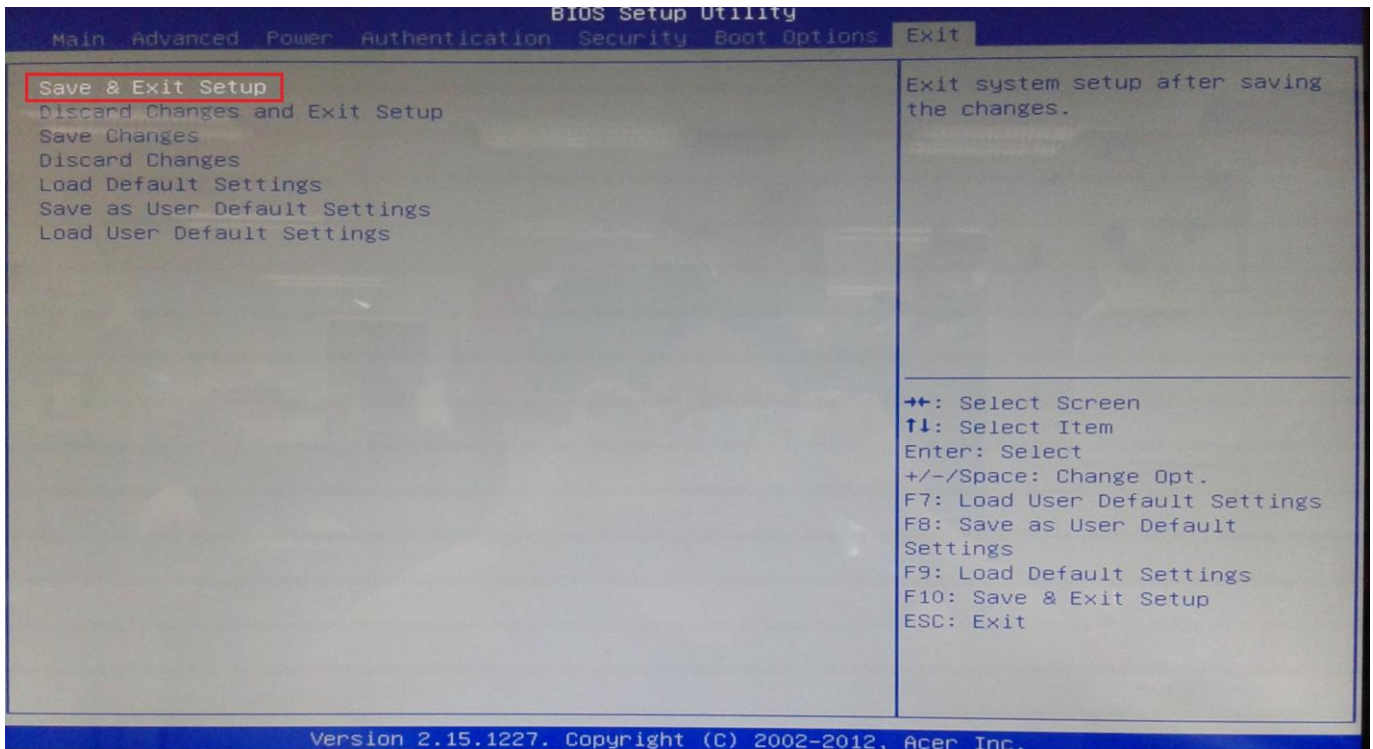
3. After finish flashing BIOS, please don't execute any programs and reboot the system directly.
4. When system reboot, please press [Del] to enter BIOS Setup
5. In "Exit" page, select "Load Default Settings" and press [Enter] key.



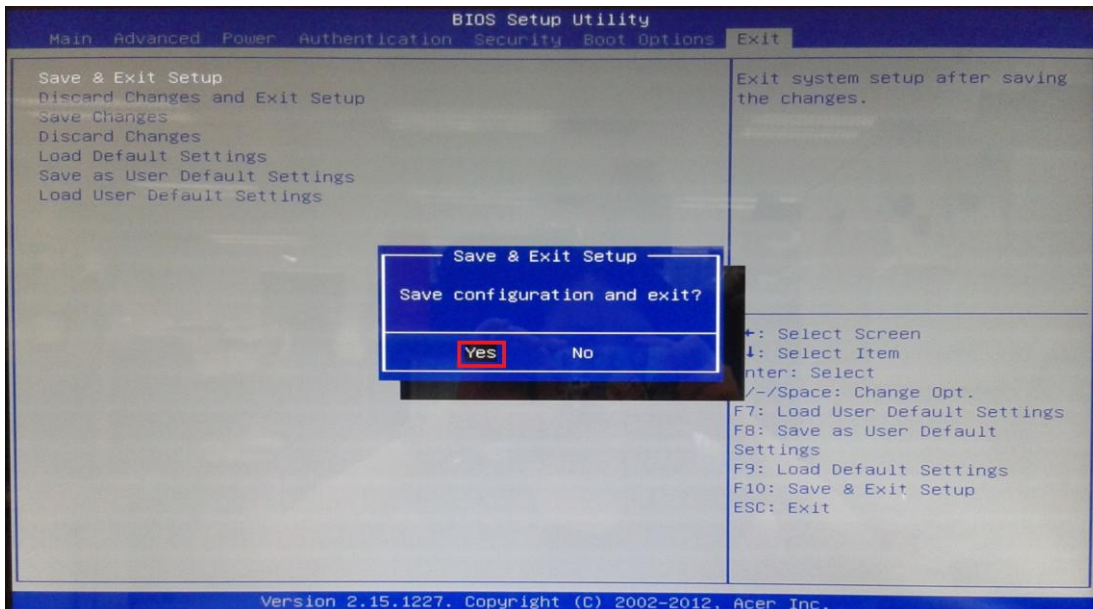
6. Select "Yes" and press [Enter] key.



7. Select “Save & Exit Setup” and press [Enter] key.



8. Select “Yes” and press [Enter] key.



9. Flash BIOS is finished.