

---

# Windows Secure Flash Utility S.O.P.

---

Ver .1.1


## Instructions:

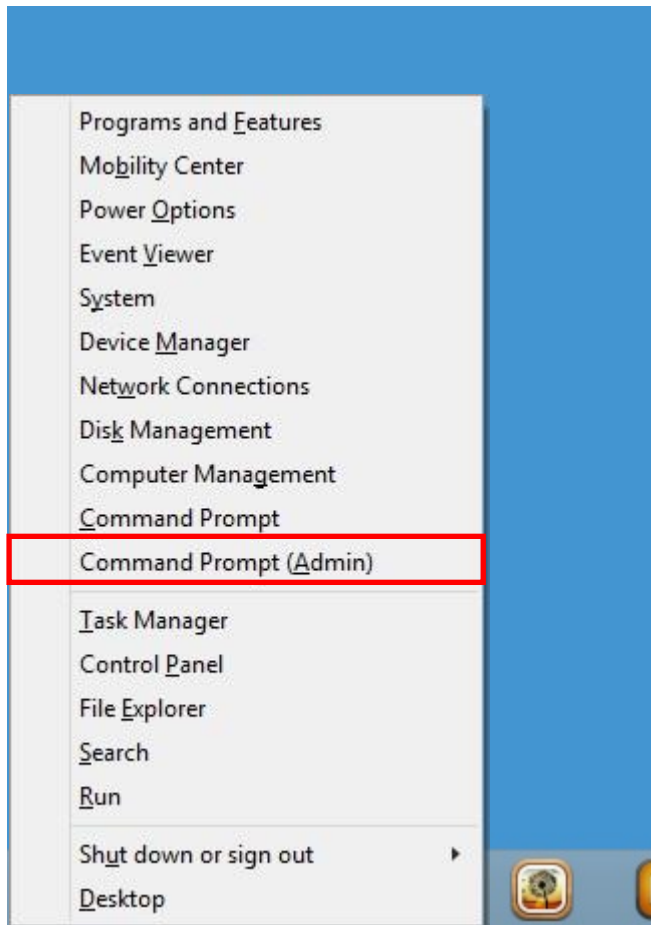
**Step 1.** In Windows 8.1 x64 OS, unzip the compressed file of BIOS ROM package  
“**BIOS\_V2.xx\_W8x64.7z**” (V2.xx = Version 2.xx), and save the Windows Flash file  
“**Z5WE32xxW.exe**” to your computer.

(Take V2.11 for example.)

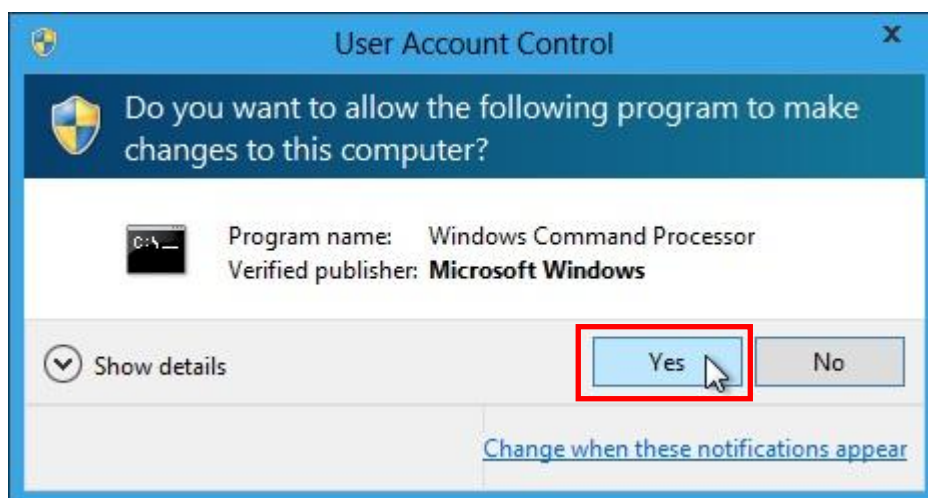
(In this example, the files are unzipped and saved to “C:\” location.)



**Step 2.** Please press the Windows Key Shortcuts “WINKEY  + X” on the keyboard to open the Quick Link menu, and then choose “Command Prompt (Admin)”.



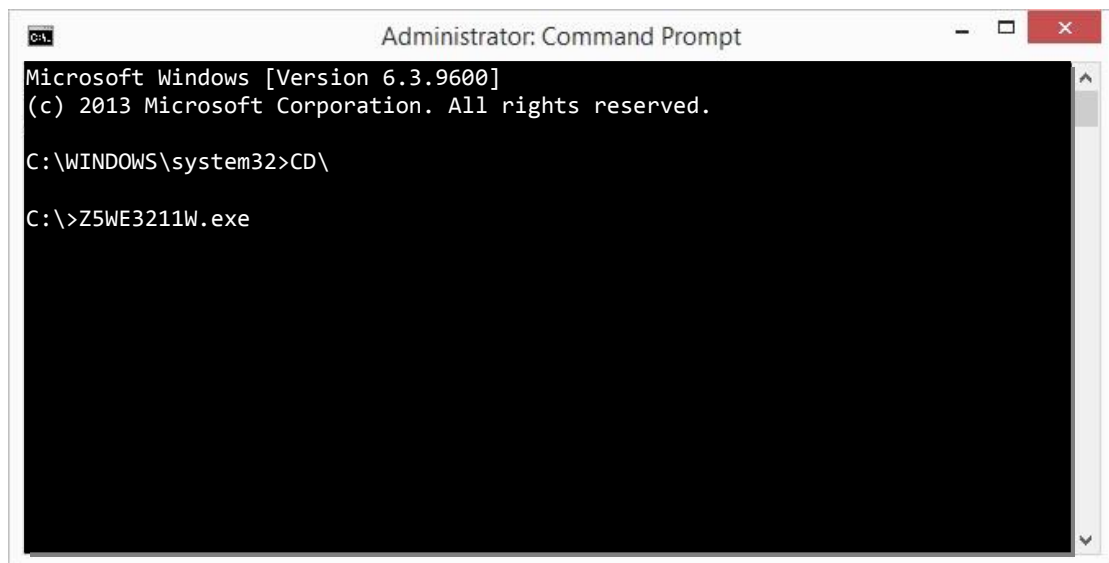
**Step 3.** (If User Account Control is enabled,) System will pop up a question window: “Do you want to allow the following program to make changes to this computer?” Please choose “Yes” as respond.



**Step 4.** Change to the path where “Z5WE32xxW.exe” was saved to in step 1 (i.e. “C:\” in this case) with Command Prompt window.

**(Take V2.11 for example.)**

**(In this example, the files are unzipped and saved to “C:\” location.)**



```
Administrator: Command Prompt
Microsoft Windows [Version 6.3.9600]
(c) 2013 Microsoft Corporation. All rights reserved.

C:\WINDOWS\system32>CD\

C:\>Z5WE3211W.exe
```

**Step 5.** Execute the “Z5WE32xxW.exe” file.

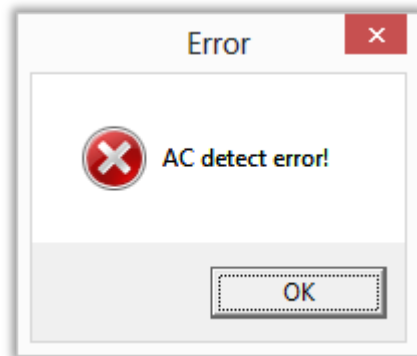
**(Take V2.11 for example.)**



**Notice 1:**

Before flashing BIOS, Please DO NOT remove AC Power Source. If warning message is shown as below, please check AC is plugged in or not.

**Error: AC detect error!**



**Notice 2:**

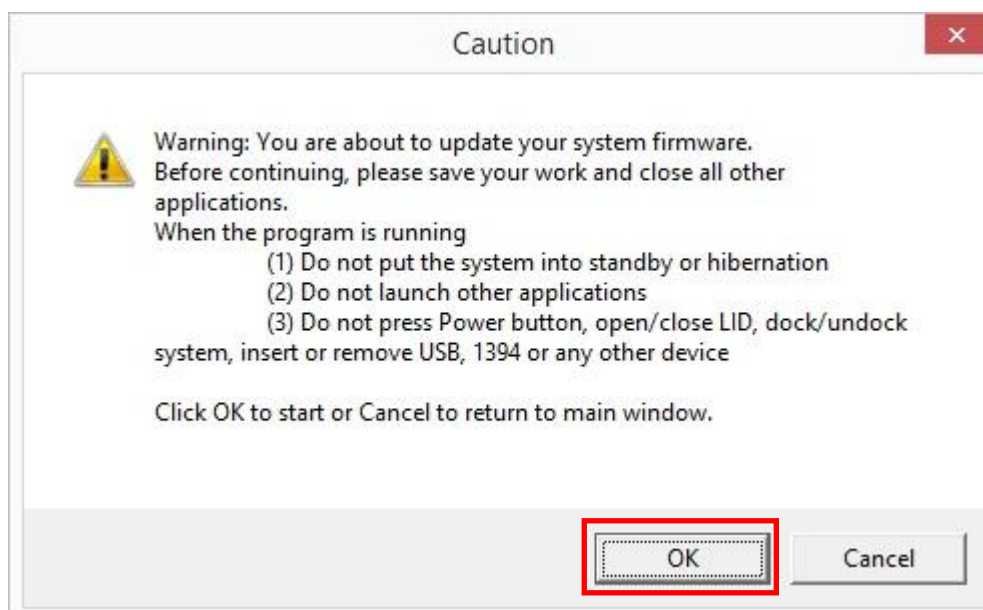
While flashing BIOS, Please DO NOT remove AC Power Source. If warning message is shown as below, please check AC is plugged in or not.

**Caution! Insydeflash cannot run in battery power.**

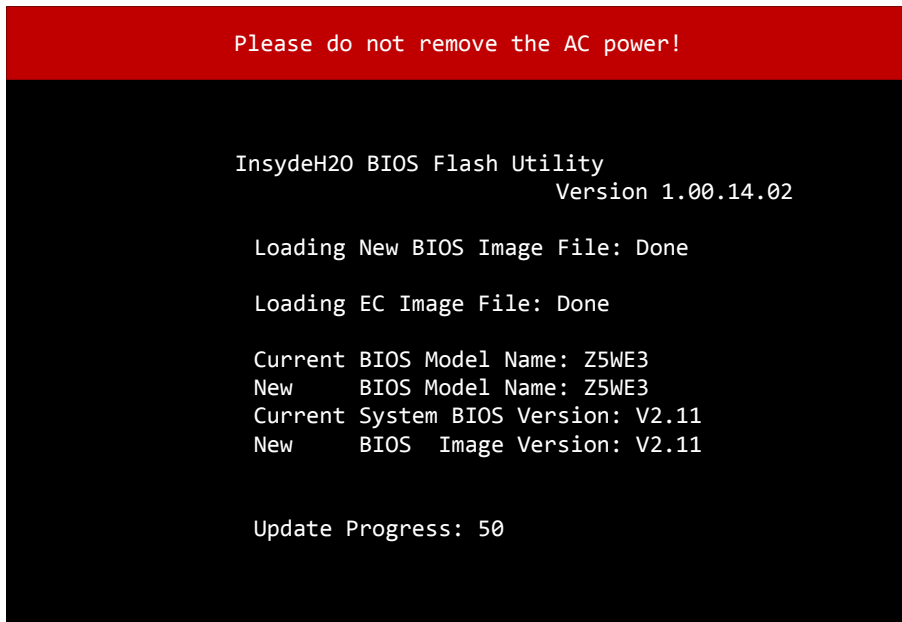
**Please plug-in AC power and try again.**



**Step 6.** Please check with below cautions, and click OK to start flashing.

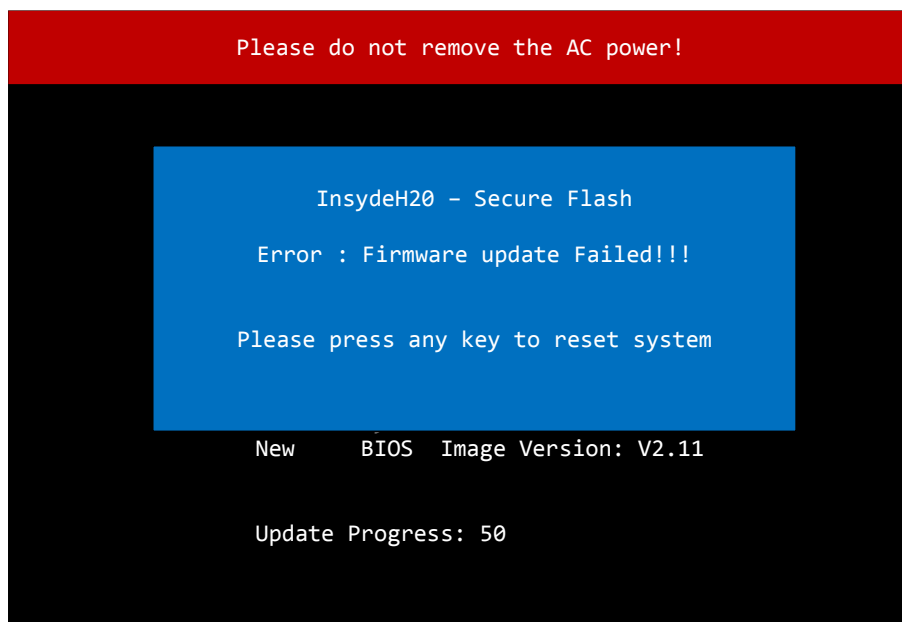


**Step 7.** System will auto reboot, and start doing secure flash.

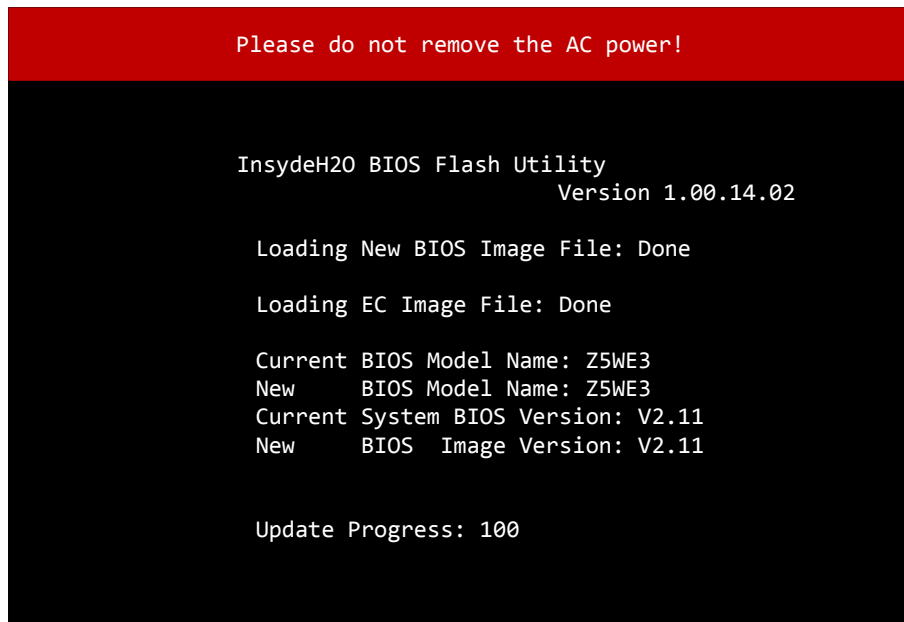


**Notice 3:**

**While flashing BIOS on Secure flash windows please DO NOT remove AC Power Source. If warning message is shown as below, please check AC is plugged in or not.**



**Step 8.** If everything works well, a few seconds after the update progress reaches 100%, the system will reboot.

A screenshot of a BIOS update utility window. At the top, a red banner contains the text "Please do not remove the AC power!". Below this, on a black background with white text, the utility name "InsydeH2O BIOS Flash Utility" and version "Version 1.00.14.02" are displayed. The progress shows "Loading New BIOS Image File: Done" and "Loading EC Image File: Done". It then compares the current BIOS model name "Z5WE3" with the new one, and the current system BIOS version "V2.11" with the new BIOS image version "V2.11". Finally, it shows "Update Progress: 100".

```
Please do not remove the AC power!

InsydeH2O BIOS Flash Utility
                          Version 1.00.14.02

Loading New BIOS Image File: Done

Loading EC Image File: Done

Current BIOS Model Name: Z5WE3
New      BIOS Model Name: Z5WE3
Current System BIOS Version: V2.11
New      BIOS Image Version: V2.11

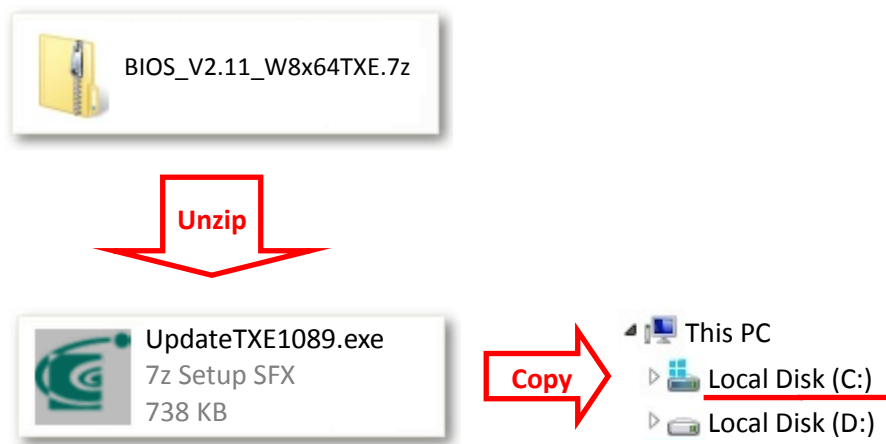
Update Progress: 100
```

**Step 9.** After updating BIOS, please boot into Win8.1 again, and continue to update TXE.

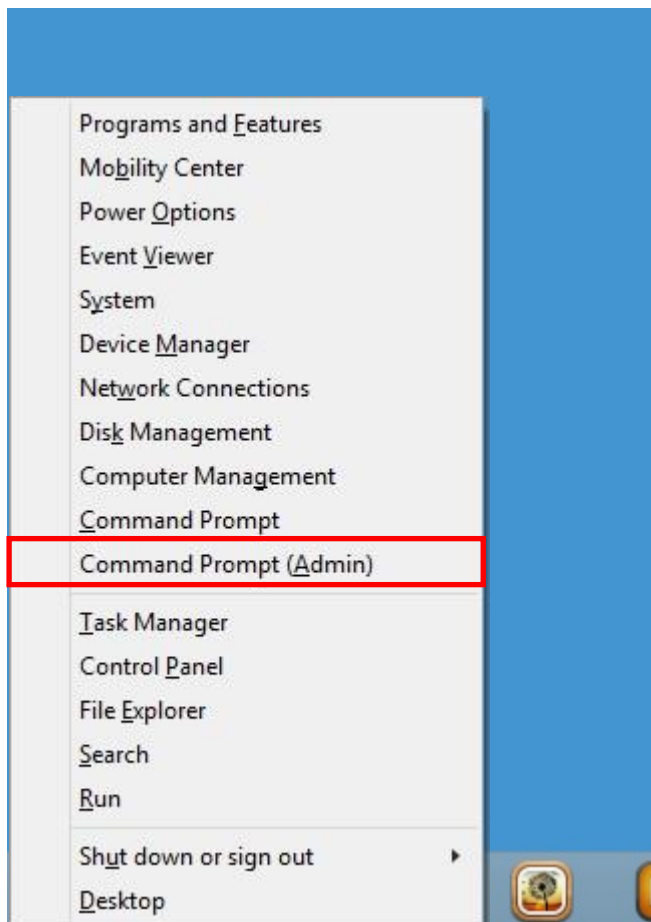
**Step 10.** In Windows 8.1 x64 OS, unzip the compressed file of BIOS ROM package “BIOS\_V2.xx\_W8x64TXE.7z” (V2.xx = Version 2.xx), and save the TXE Flash file “UpdateTXExxxx.exe” (TXExxxx = TXE Version xxxx) to your computer.

(Take TXE Version 1089 for example.)

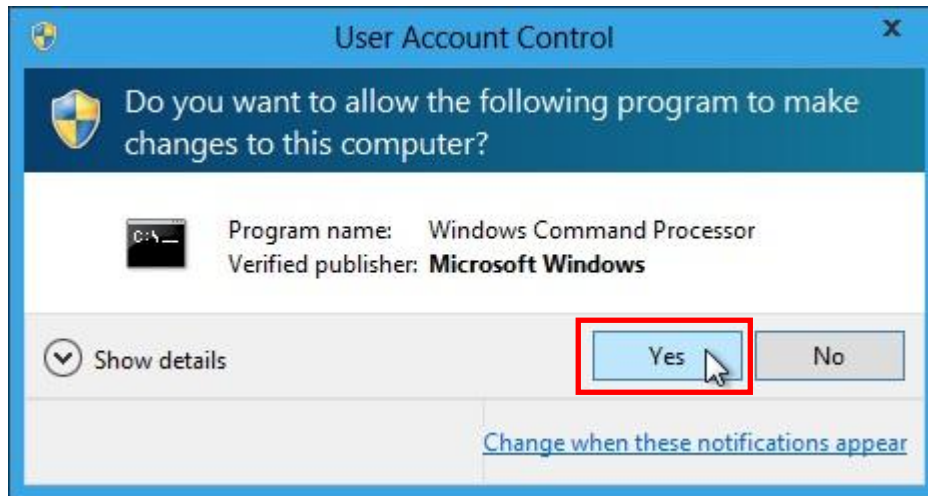
(In this example, the files are unzipped and saved to “C:\” location.)



**Step 11.** Please press the Windows Key Shortcuts “WINKEY + X” on the keyboard to open the Quick Link menu, and then choose “Command Prompt (Admin)”.



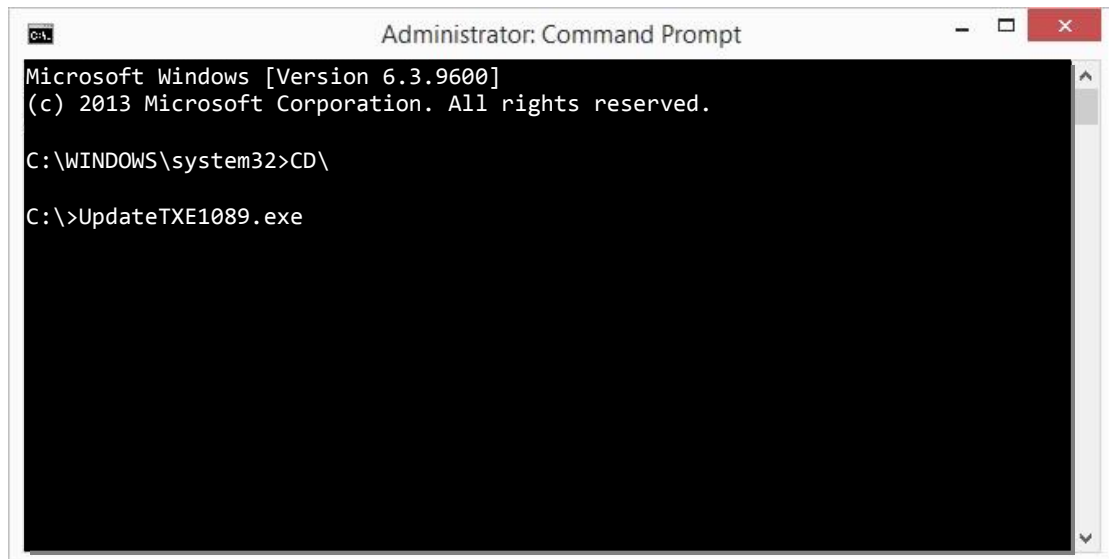
**Step 12.** (If User Account Control is enabled,) System will pop up a question window: “Do you want to allow the following program to make changes to this computer?” Please choose “Yes” as respond.



**Step 13.** Change to the path where “UpdateTXExxxx.exe” was saved to in step 1 (i.e. “C:\” in this case) with Command Prompt window.

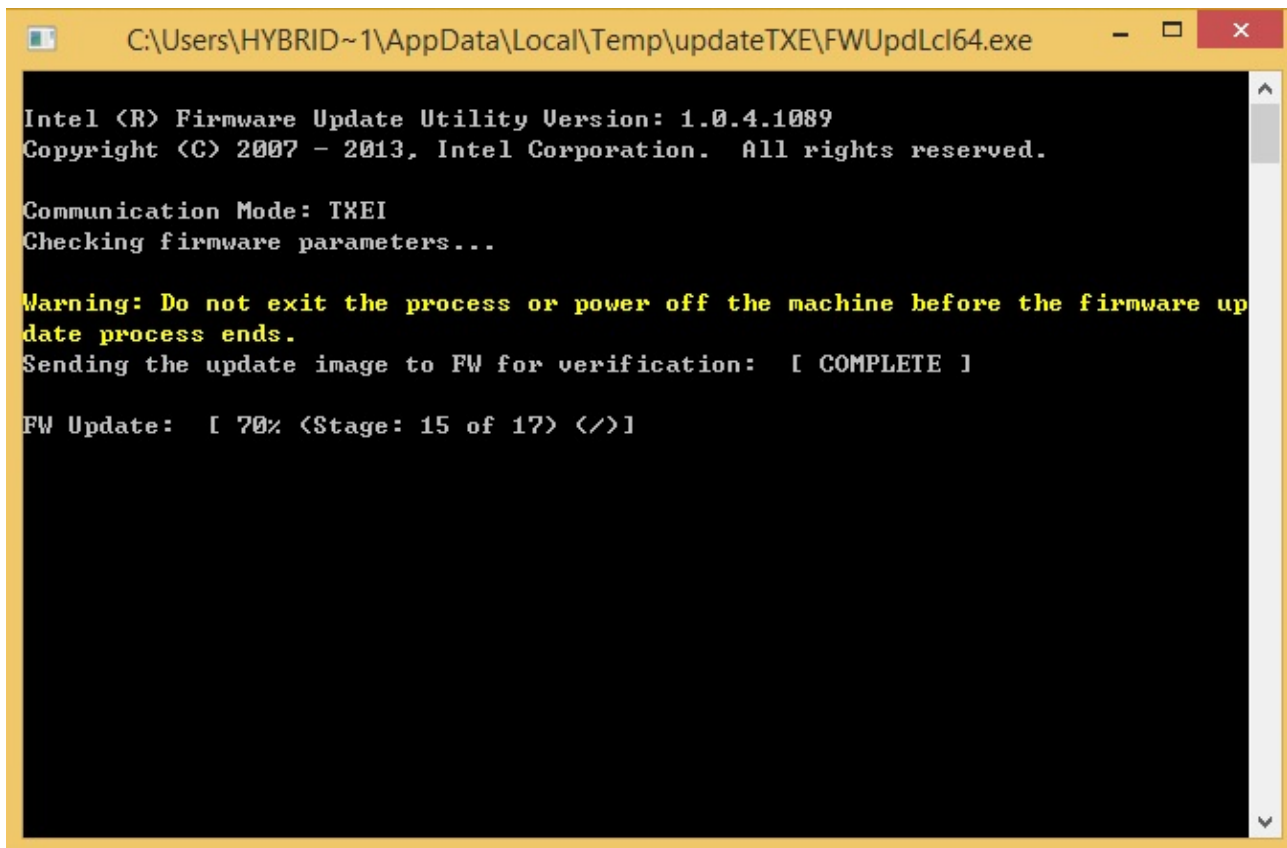
**(Take TXE Version 1089 for example.)**

**(In this example, the files are unzipped and saved to “C:\” location.)**





**Step 14.** Execute the “UpdateTXExxxx.exe” file.

A screenshot of a Windows command prompt window titled "C:\Users\HYBRID~1\AppData\Local\Temp\updateTXE\FWUpdLcl64.exe". The window has a yellow title bar and standard Windows window controls. The command prompt shows the following text:

```
Intel <R> Firmware Update Utility Version: 1.0.4.1089
Copyright <C> 2007 - 2013, Intel Corporation. All rights reserved.

Communication Mode: TXEI
Checking firmware parameters...

Warning: Do not exit the process or power off the machine before the firmware up
date process ends.
Sending the update image to FW for verification: [ COMPLETE ]

FW Update: [ 70% <Stage: 15 of 17> </>]
```

**Step 15.** If everything works well, a few seconds after the update progress completed, the system will reboot.

**Notice:**

While installing Windows 7 drivers, please follow the installed order and be sure to install “03.Kernel-Mode Driver Framework (KMDF)”.