

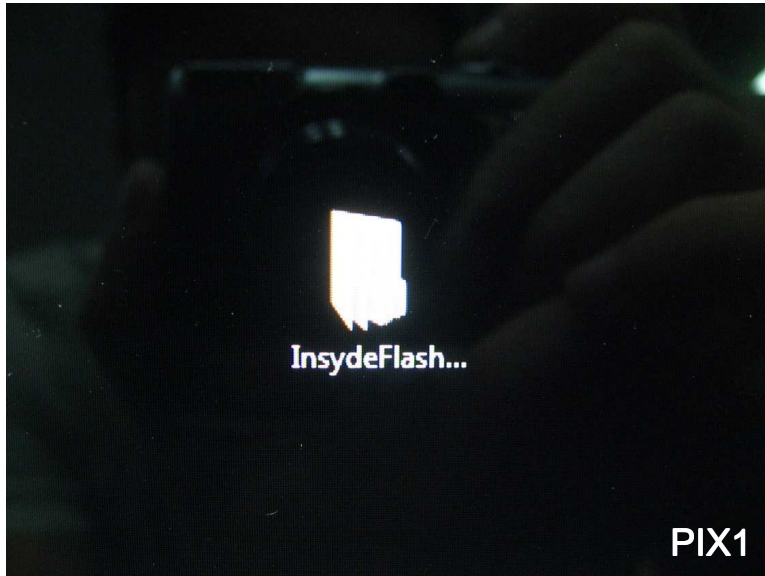


**Inventec**

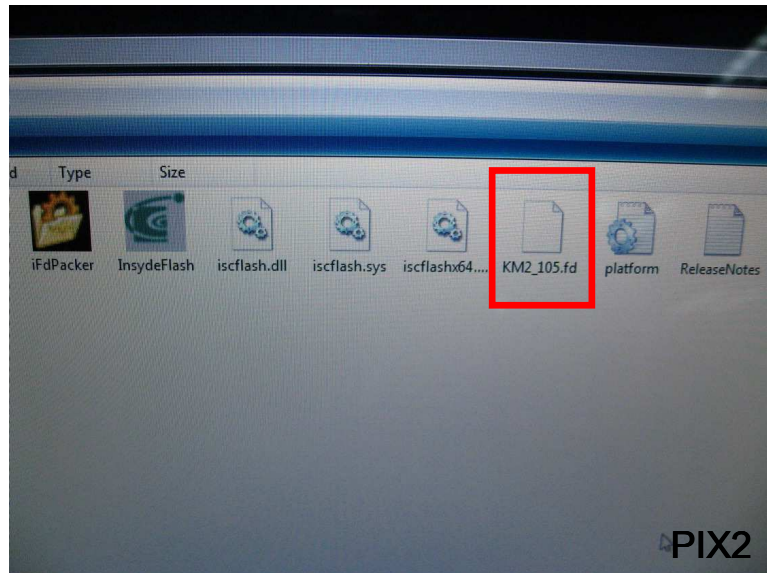
## Insyde Win-Flash Tool SOP

Hank Chang  
CSD3  
2008-09-12

# Insyde Win-Flash Tool SOP



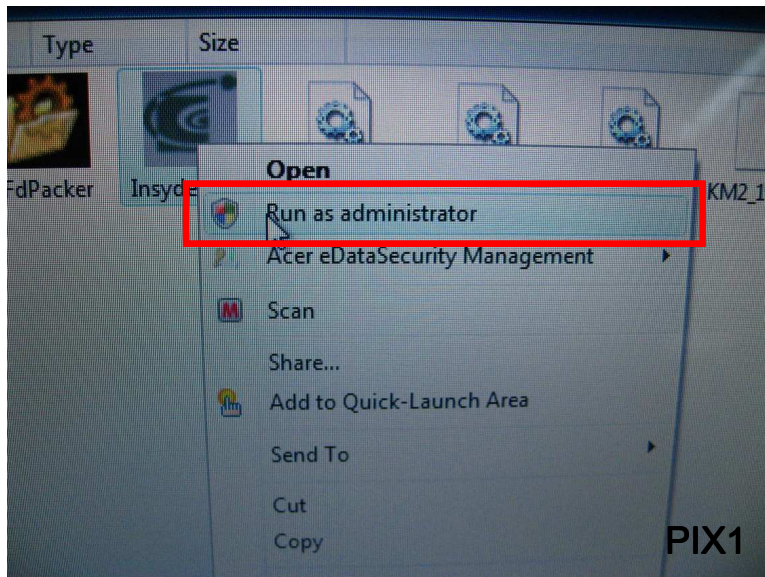
1. Open file folder "InsydeFlashWin".  
(PIX1)



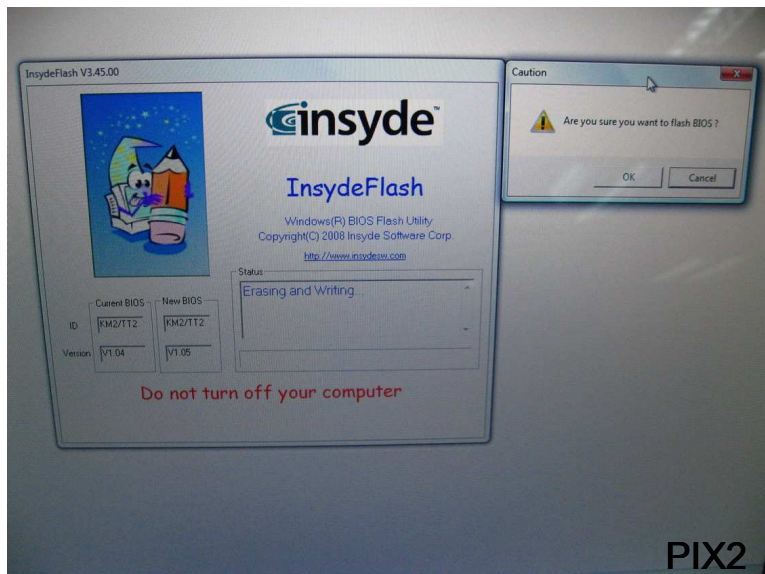
2. Copy the new BIOS .fd file into win-flash tool folder.  
(PIX2)

The BIOS .fd file should be the one you're going to flash.

# Insyde Win-Flash Tool SOP



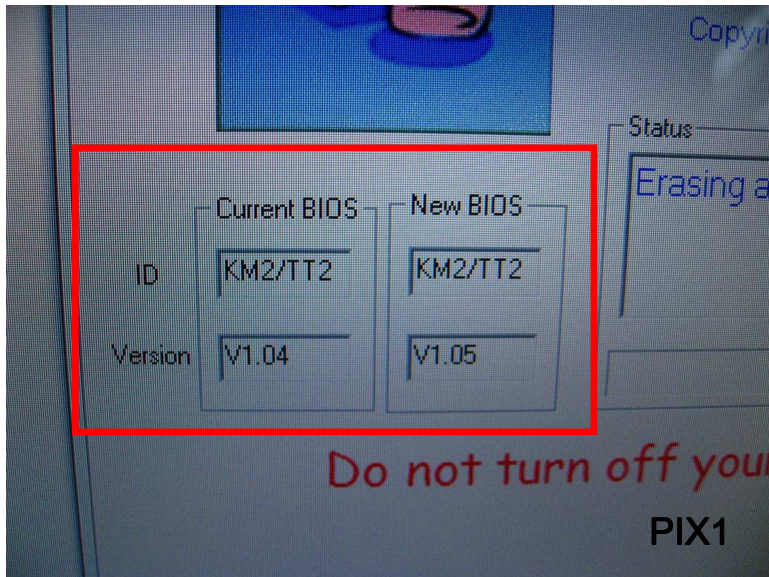
3. Right click and run "InsydeFlash.exe as administrator."  
(PIX1)



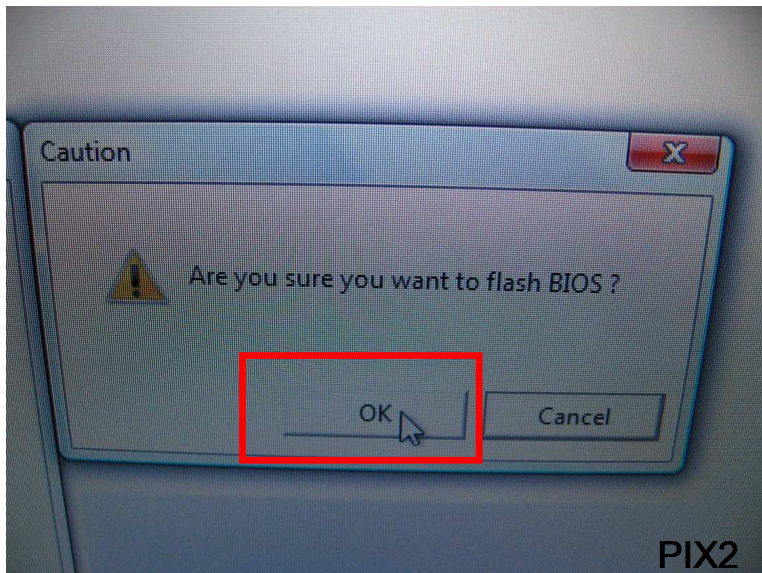
4. The win-flash tool will show operation interface as PIX2.



# Insyde Win-Flash Tool SOP

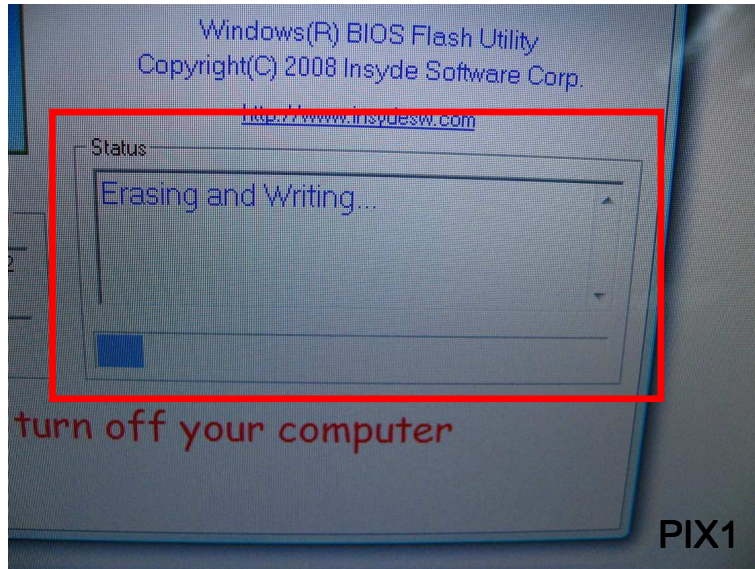


5. It'll show Current BIOS version and the new BIOS version.  
Please check the BIOS version correct or not.  
(PIX1)

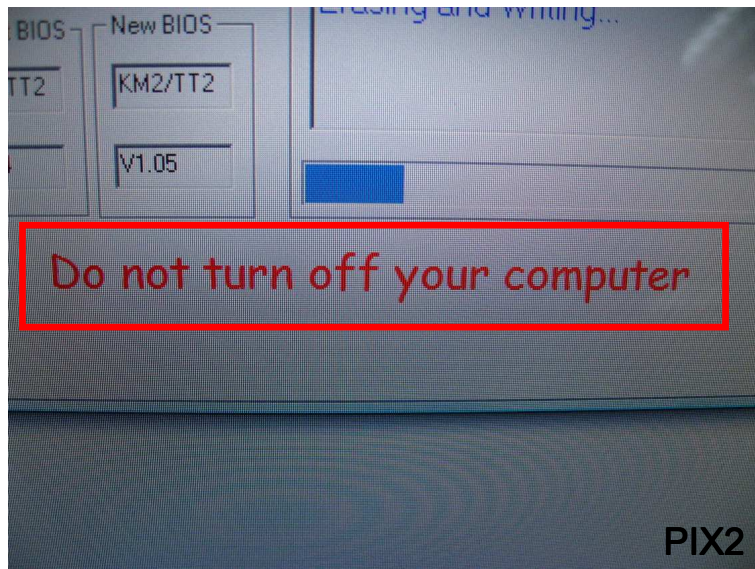


6. Click "OK" to flash new BIOS.  
(PIX2)

# Insyde Win-Flash Tool SOP



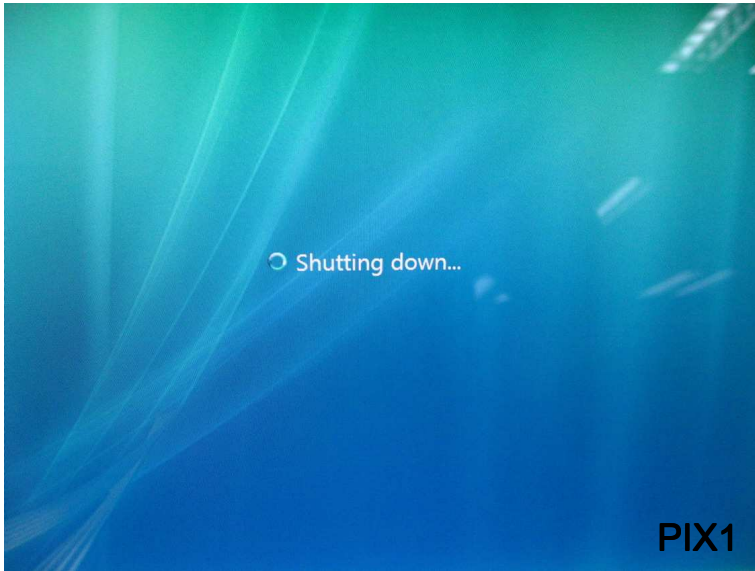
7. BIOS is flashing.  
(PIX1)



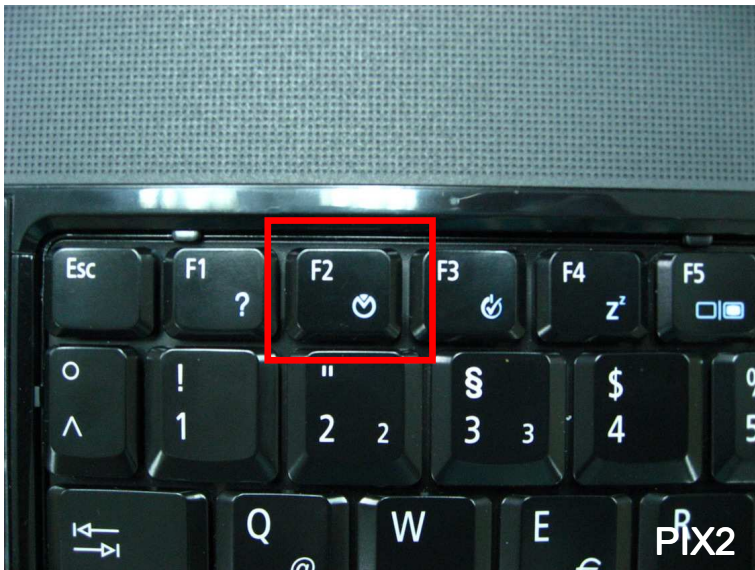
8. Do Not Turn Off your Computer when BIOS  
flashing.  
(PIX2)



# Insyde Win-Flash Tool SOP

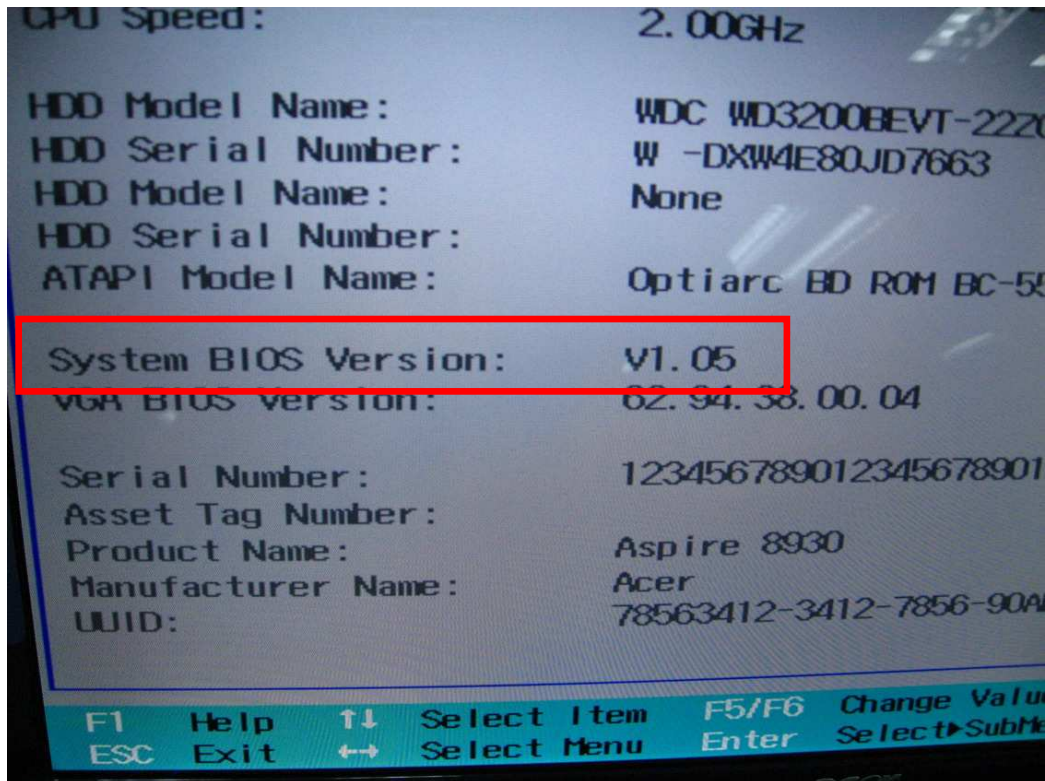


9. After BIOS flashed, System will reboot automatically.  
(PIX1)



10. Press [F2] into the BIOS setup utility to check the BIOS version.  
(PIX2)

# Insyde Win-Flash Tool SOP



11. You can see the BIOS version you've flashed.

-Finish-



Thank You

**Inventec**